

*allegro*

C. 1<sup>o</sup>

C. 2<sup>o</sup>

C. 3<sup>o</sup>

Symp.

H<sub>1</sub>

H<sub>2</sub>

Bassons

V<sub>1</sub>

V<sub>2</sub>

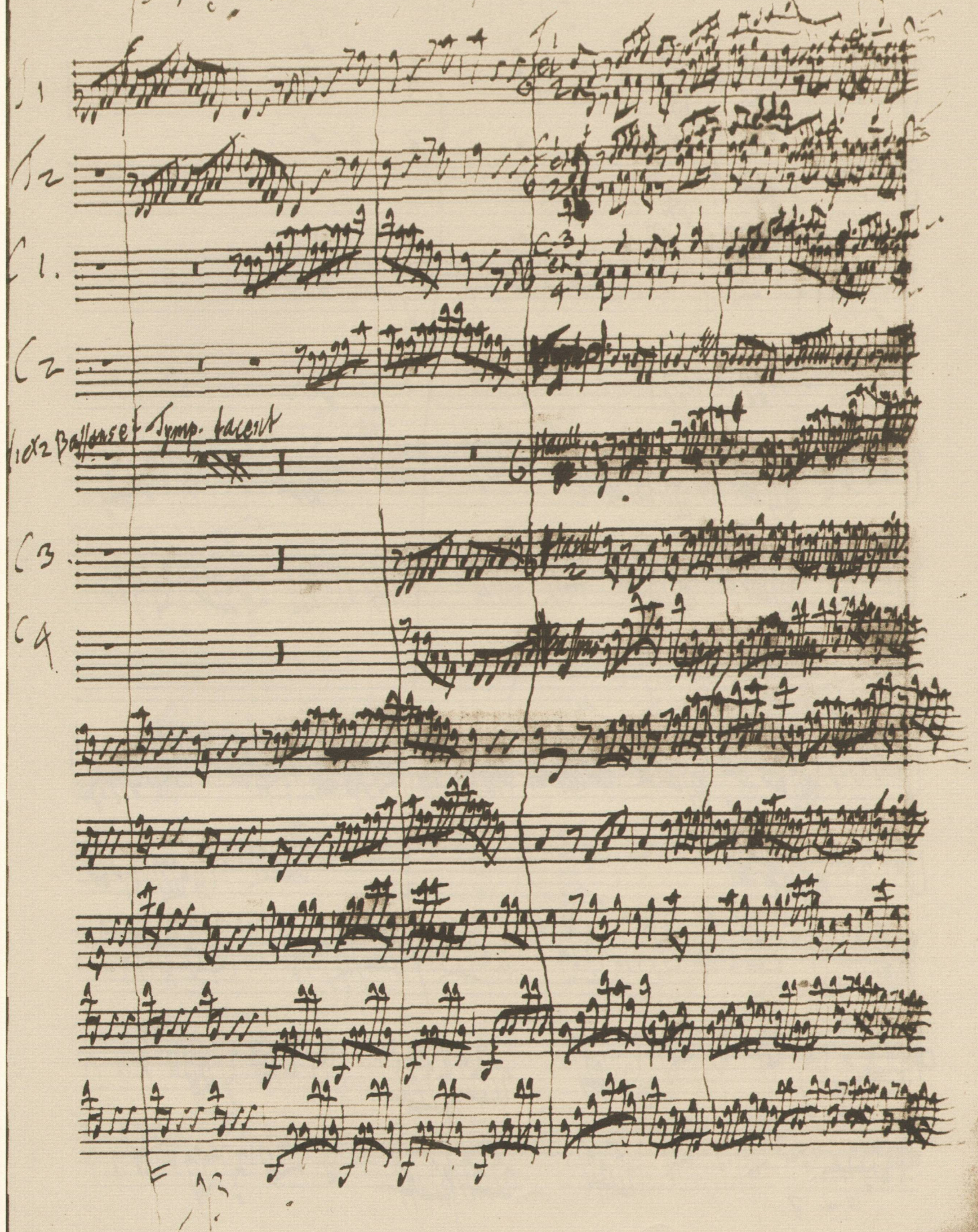
Viola

Vcllo

Contra

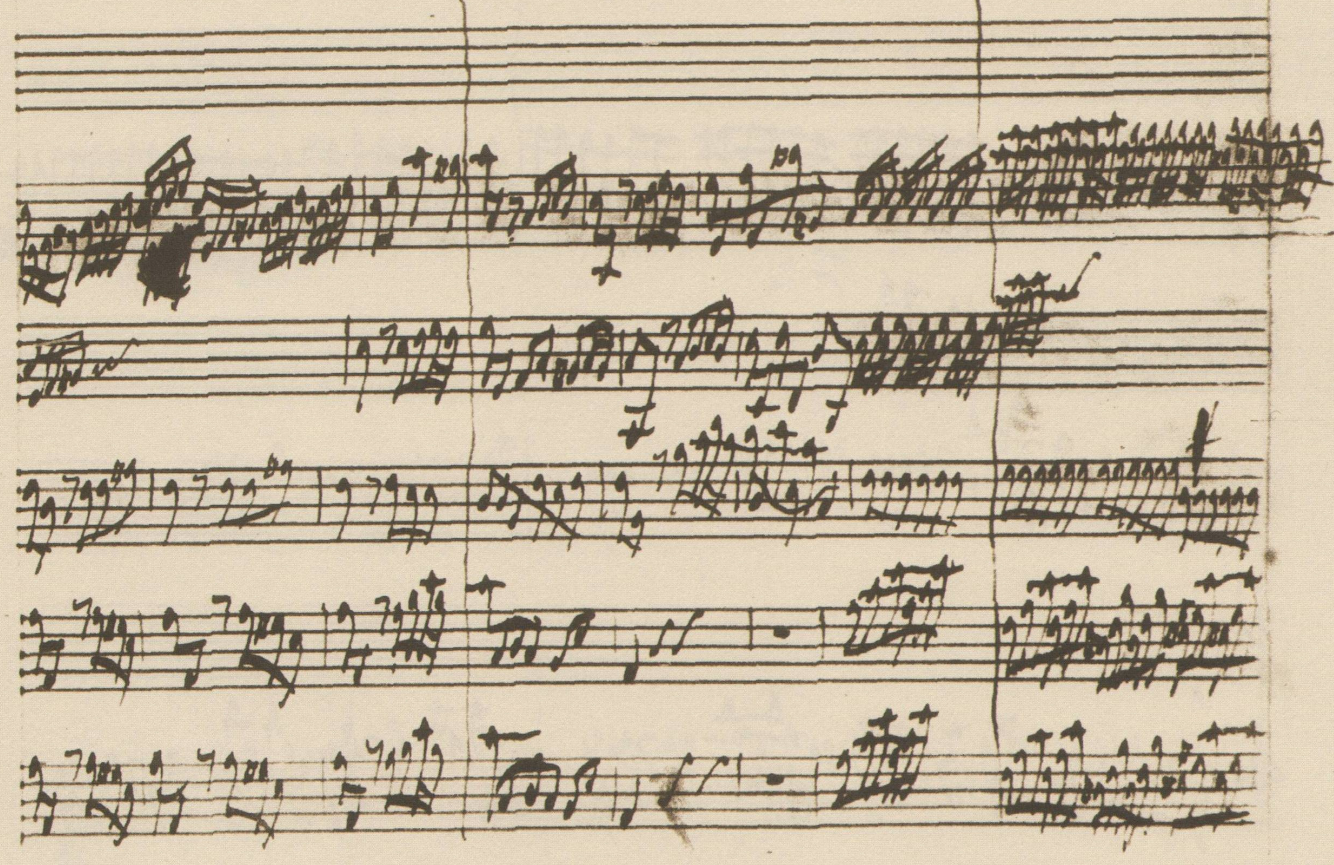
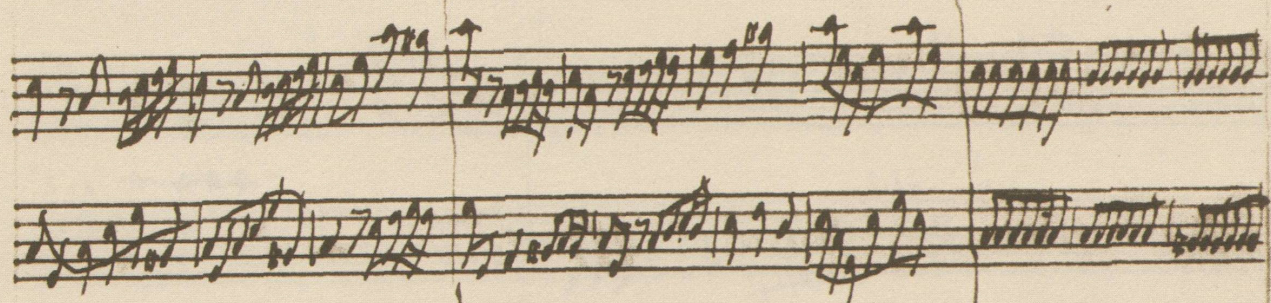
1. B. Criva ouche 17 in A. de cor in re minore

Handwritten musical score for a string quartet and two violas. The score consists of 13 staves. The first four staves are labeled C1, C2, C3, and C4. The fifth staff is labeled "Vex 2 Ballense Sym. tacent". The notation is dense and includes various musical symbols such as notes, rests, and dynamic markings. The paper shows signs of age and wear, with a prominent vertical crease down the center.



Sirani II

A handwritten musical score for a piece titled "Sirani II". The score is written on 12 staves, organized into two systems of six staves each, separated by a vertical line. The notation is dense and includes various rhythmic values, accidentals, and dynamic markings. The first system (staves 1-6) features a mix of eighth and sixteenth notes, often beamed together, with some rests. The second system (staves 7-12) is characterized by more complex rhythmic patterns, including many sixteenth notes and some triplet-like groupings. The handwriting is in dark ink on aged, slightly yellowed paper.



Handwritten musical notation on three staves. The top staff has a treble clef and a key signature of one sharp (F#). The middle and bottom staves have a bass clef and a key signature of one sharp (F#). The notation is sparse, with a large, stylized flourish resembling a '3' on the middle staff and a large, stylized flourish resembling a '4' on the bottom staff.

Handwritten musical notation on two staves. Both staves have a treble clef and a key signature of one sharp (F#). The notation is dense and complex, featuring many notes, some with stems, and some with flags or beams.

Handwritten musical notation on two staves. Both staves have a treble clef and a key signature of one sharp (F#). The notation is dense and complex, featuring many notes, some with stems, and some with flags or beams.

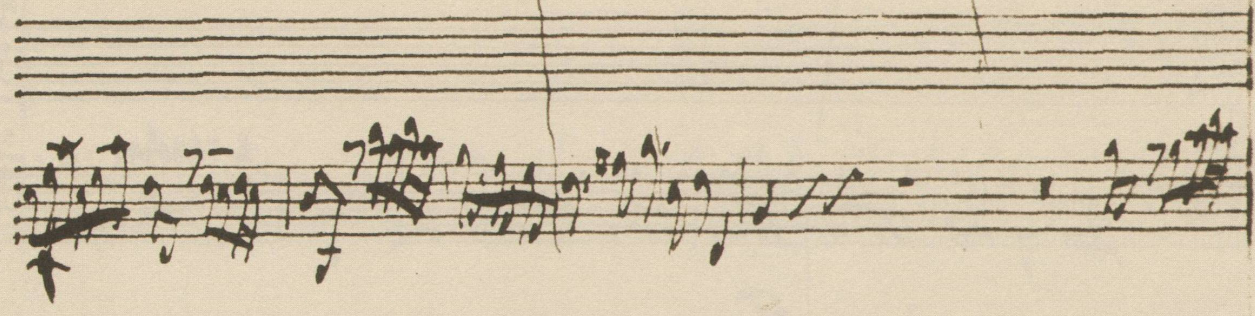
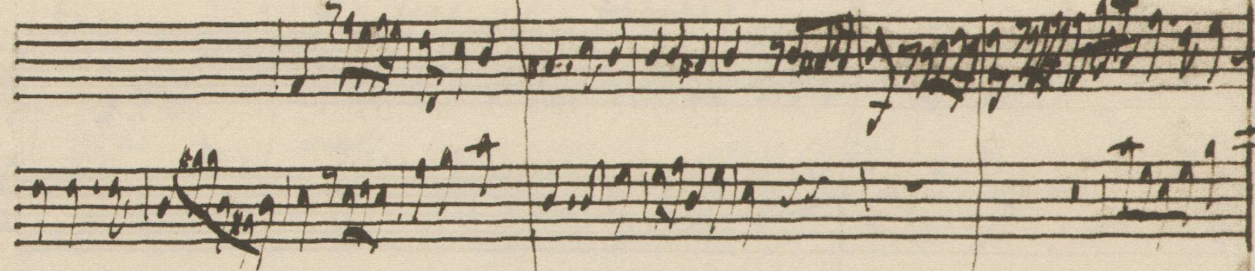
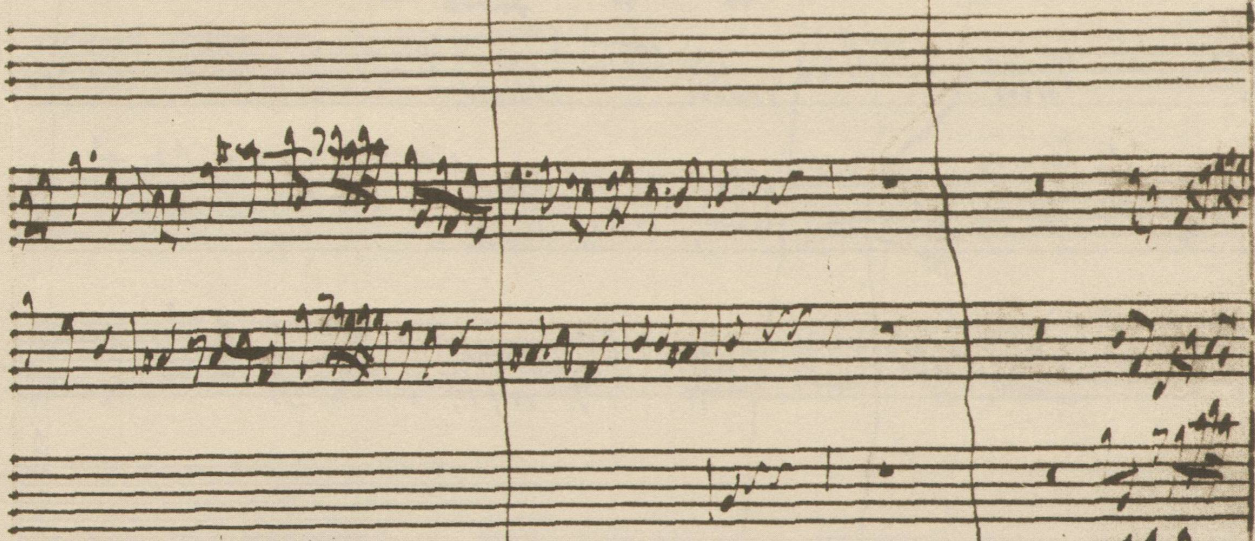
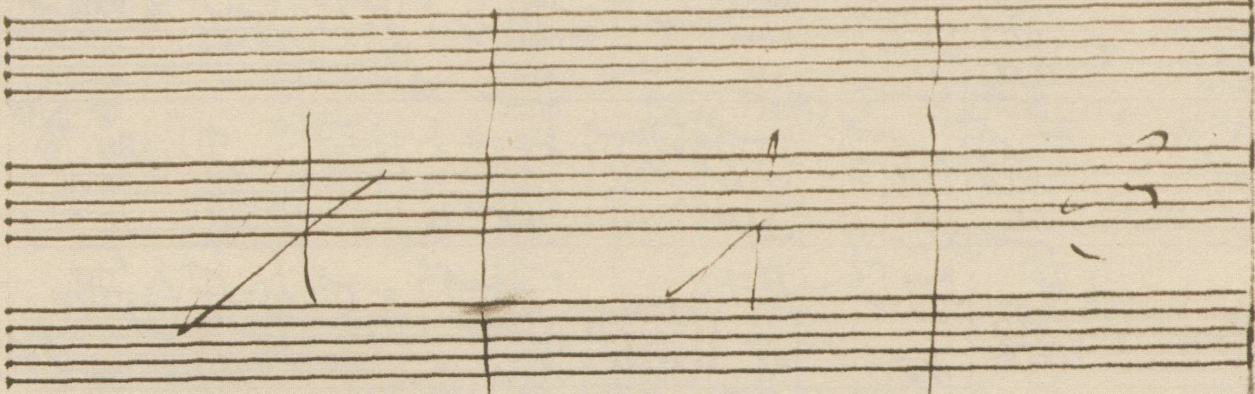
Handwritten musical notation on two staves. Both staves have a treble clef and a key signature of one sharp (F#). The notation is extremely dense and complex, with many notes and stems, appearing almost as a solid block of ink.

Handwritten musical notation on two staves. Both staves have a treble clef and a key signature of one sharp (F#). The notation is dense and complex, featuring many notes, some with stems, and some with flags or beams.

Handwritten musical notation on two staves. Both staves have a treble clef and a key signature of one sharp (F#). The notation is dense and complex, featuring many notes, some with stems, and some with flags or beams.

Handwritten musical notation on two staves. Both staves have a treble clef and a key signature of one sharp (F#). The notation is dense and complex, featuring many notes, some with stems, and some with flags or beams.

Handwritten musical notation on two staves. Both staves have a treble clef and a key signature of one sharp (F#). The notation is dense and complex, featuring many notes, some with stems, and some with flags or beams.



~~Vida~~

115

Soprano  
Corno  
Corno  
Tromba  
Hi  
Hi  
Bass  
Vi  
Vi  
Vid  
Violone  
Cora

A handwritten musical score on aged paper, featuring ten staves of music. The staves are labeled on the left with instrument names: Soprano, Corno, Corno, Tromba, Hi, Hi, Bass, Vi, Vi, Vid, Violone, and Cora. The notation is dense and includes various musical symbols such as notes, rests, and clefs. A large 'X' is drawn across the middle of the page, and another 'X' is at the bottom center. The number '115' is written in the upper right corner. The paper shows signs of wear, including creases and discoloration.

Cora

Handwritten musical score on aged paper, featuring multiple staves of music. The notation includes various rhythmic patterns, such as dense clusters of notes and repeated rhythmic figures. The score is divided into measures by vertical bar lines. There are some annotations and markings, including a "b7" in the top left corner, a "b75" above a staff, and a "b7" below a staff. The paper shows signs of wear, including a tear at the top left and some staining.