

Clarinet in B \flat

Symphony # 12(IV) in d
4th Movement(4'6'')

Michel Rondeau
June 10th-14th,2005

La Terre (l'infini) (♩ = circa 90)

mf

3

4

6

8

11

12

13

16

19

Symphony # 12(IV) in d Bb Clarinet

2
22



23



25



27



30



32



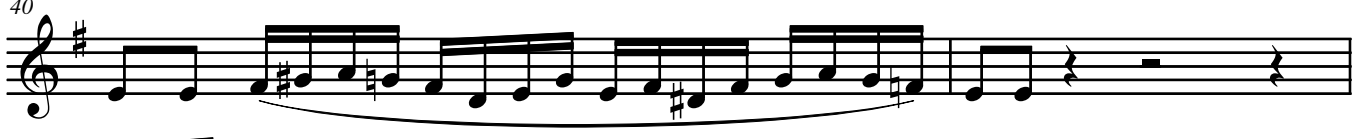
35



38



40



42



45



48



50 **2**

50 **2**

54

57

59

63

67

68

70

sfz