

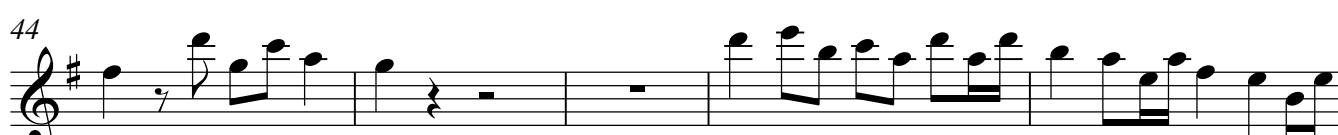
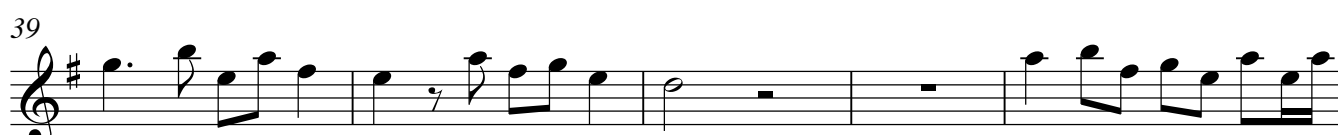
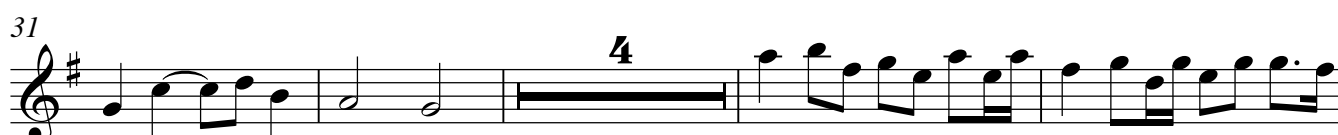
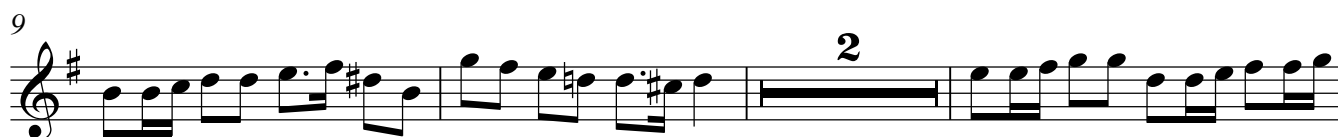
Violin 1

Sonata a Cinque, (SPCM No. 8)

(from Sacro-Profanus Concentus Musicus, (1662))

Johann Heinrich Schmelzer (c.1620–23 –1680)

(Allegro)



49

54

59 *(Presto)*

64

70

75

81

88

93

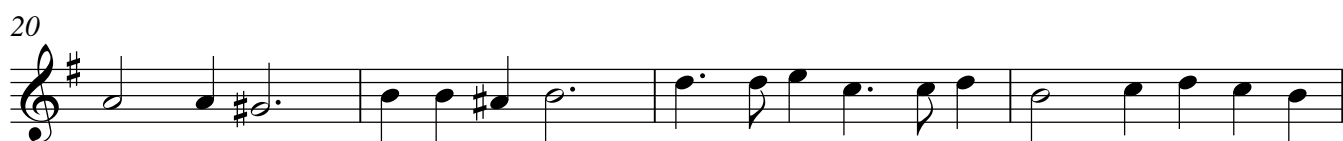
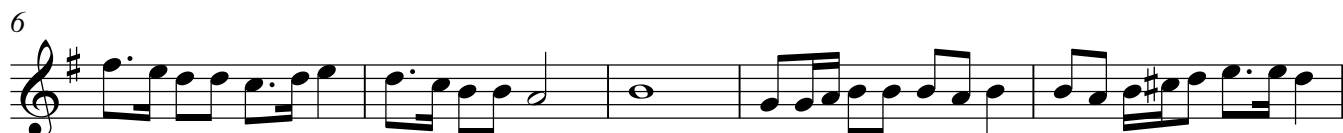
Violin 2

Sonata a Cinque, (SPCM No. 8)

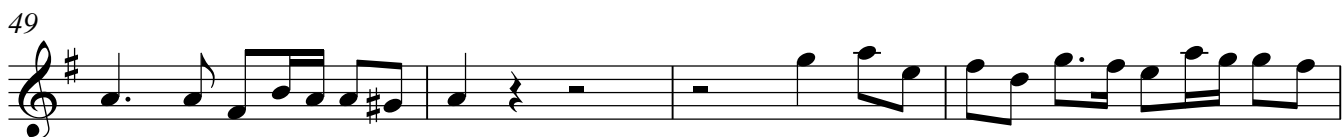
(from Sacro-Profanus Concentus Musicus, (1662))

Johann Heinrich Schmelzer (c.1620–23 –1680)

(Allegro)



49



53



59 *(Presto)*



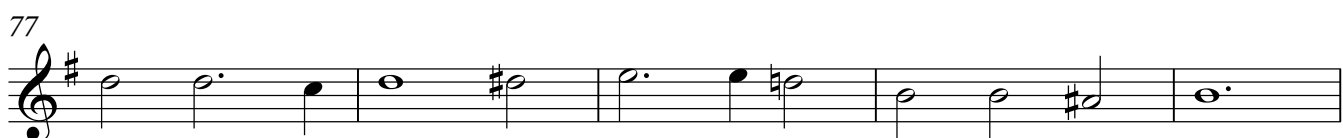
65



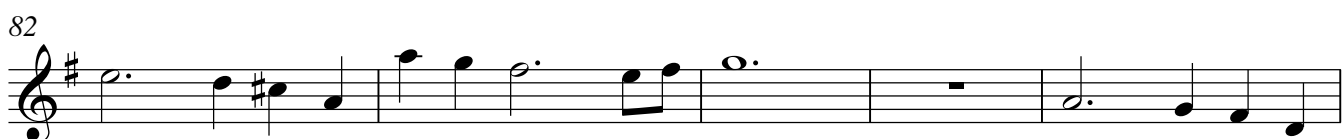
71



77



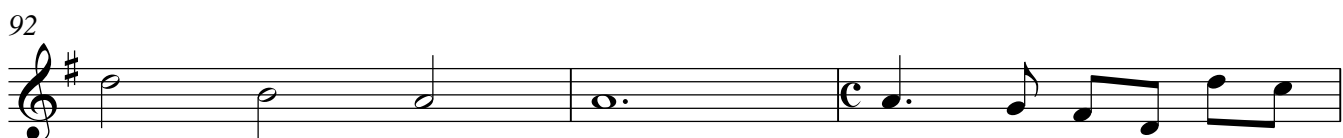
82



87



92



95



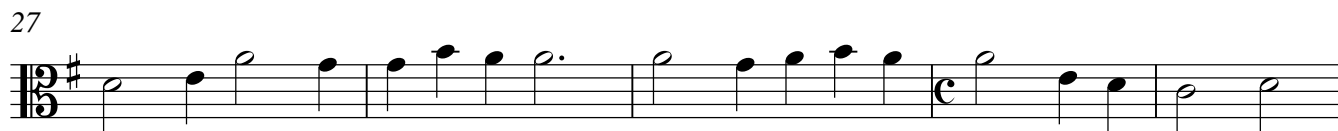
Viola 1

Sonata a Cinque, (SPCM No. 8)

(from Sacro-Profanus Concentus Musicus, (1662))

Johann Heinrich Schmelzer (c.1620–23 –1680)

(Allegro)



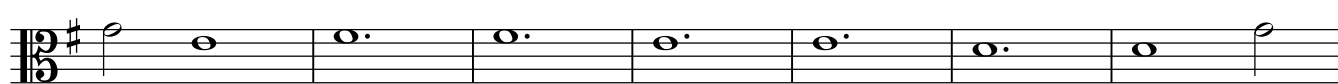
49



54

59 *(Presto)*

66



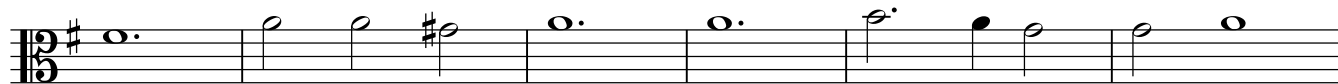
73



79



86



92



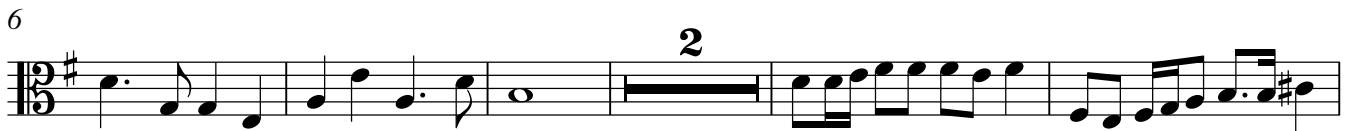
Viola 2

Sonata a Cinque, (SPCM No. 8)

(from Sacro-Profanus Concentus Musicus, (1662))

Johann Heinrich Schmelzer (c.1620–23 –1680)

(Allegro)



52



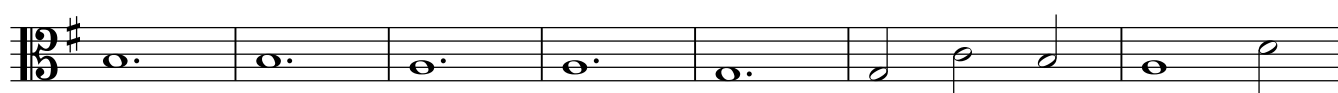
57

(Presto)

62



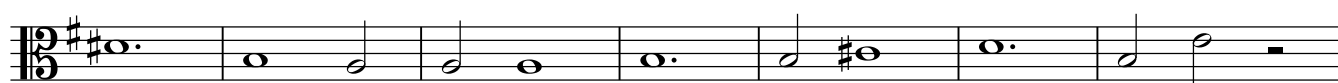
68



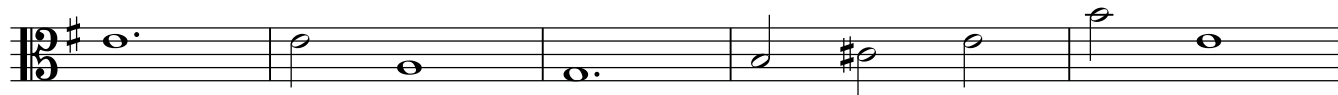
75



81



88



93



Violoncello

Sonata a Cinque, (SPCM No. 8)

(from Sacro-Profanus Concentus Musicus, (1662))

Johann Heinrich Schmelzer (c.1620–23 –1680)

(Allegro)



50

2

55

59 *(Presto)*

65

72

79

85

92