

Johann Fischer / Suite From TafelMusik (Hamburg, 1702)

Violoncello

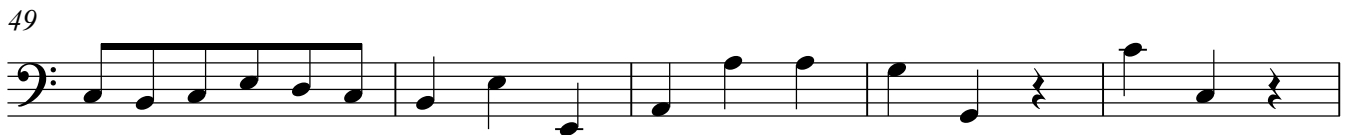
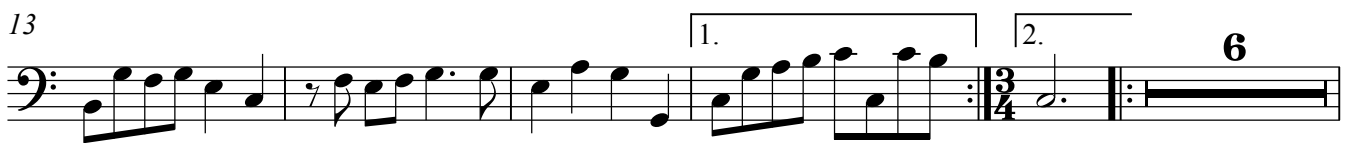
This is Johann Fischer (1646-1716) not Johann Caspar Ferdinand Fischer (1656-1746)

Ouverture

Fischer (1646-1716)

♩ = 104

Grave



Entree

1



7



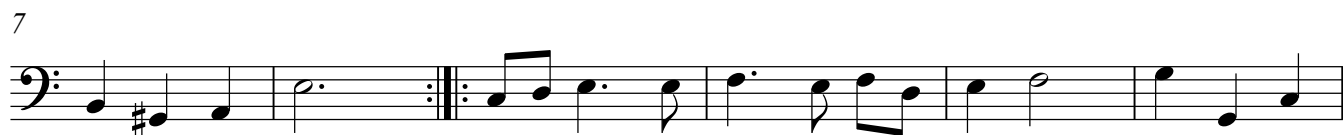
13



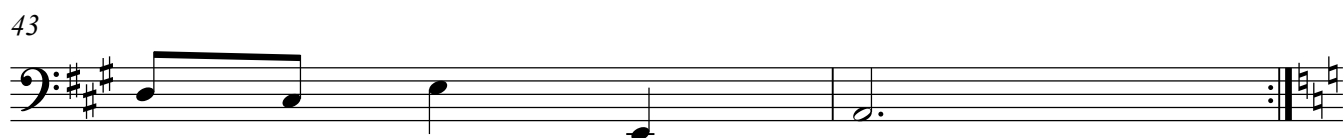
19



1 Minuet, qui se joue alternativement avec le suivant



Trio

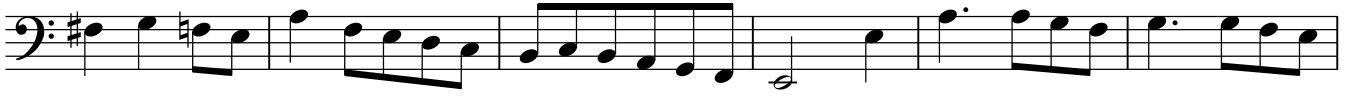


Air

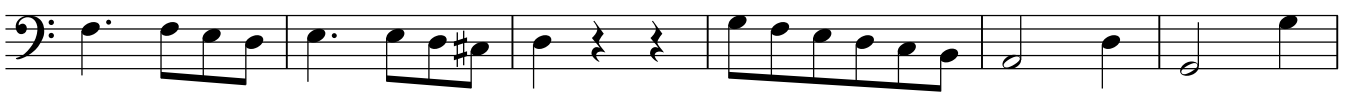
1



7



13



19



25



35



41

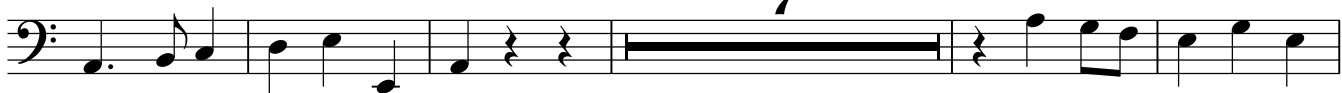


Violoncello
Chaconne

1



7



19



25



31



37




43



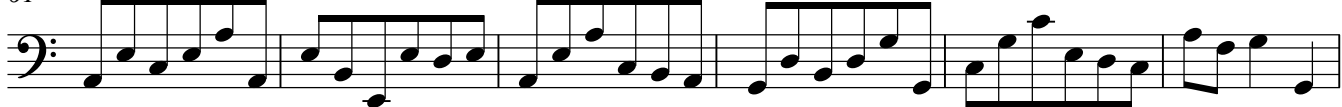
49



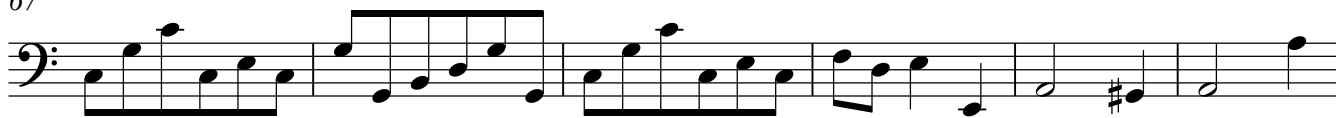
55



61



67



73



Gavotte

1



7



11

