

GRAND QUATUOR
pour

deux Violons, Alto et Violoncelle,

Dédié à Monsieur
Aug.^{te} Krentzer
Membre de la Chapelle du Roi et Professeur à l'Ecole Roy^{le} de Musique

PAR
J. CLAVEL
Professeur adjoint à l'Ecole Royale et Artiste de l'Académie

Opéra 6. Prix : 6'

à Paris,

Chez J. FREY, Editeur de Musique, Place des Victoires, N° 8.

VIOLA.

CLAVEL.

All^o Maestoso.

QUATUOR.

2 arco.

pizz.

arco.

ff

f

ff

p

f

f

p

f

pp

f

p

pp

pp

f

f

p

dol.

f

pp

p

f

cres.

f

ff

f

1
ff
p
p
1^a Volta. p
2^a Volta. 4 p
ff
dol.
F
ff
F
F
p
pizz.
1 2

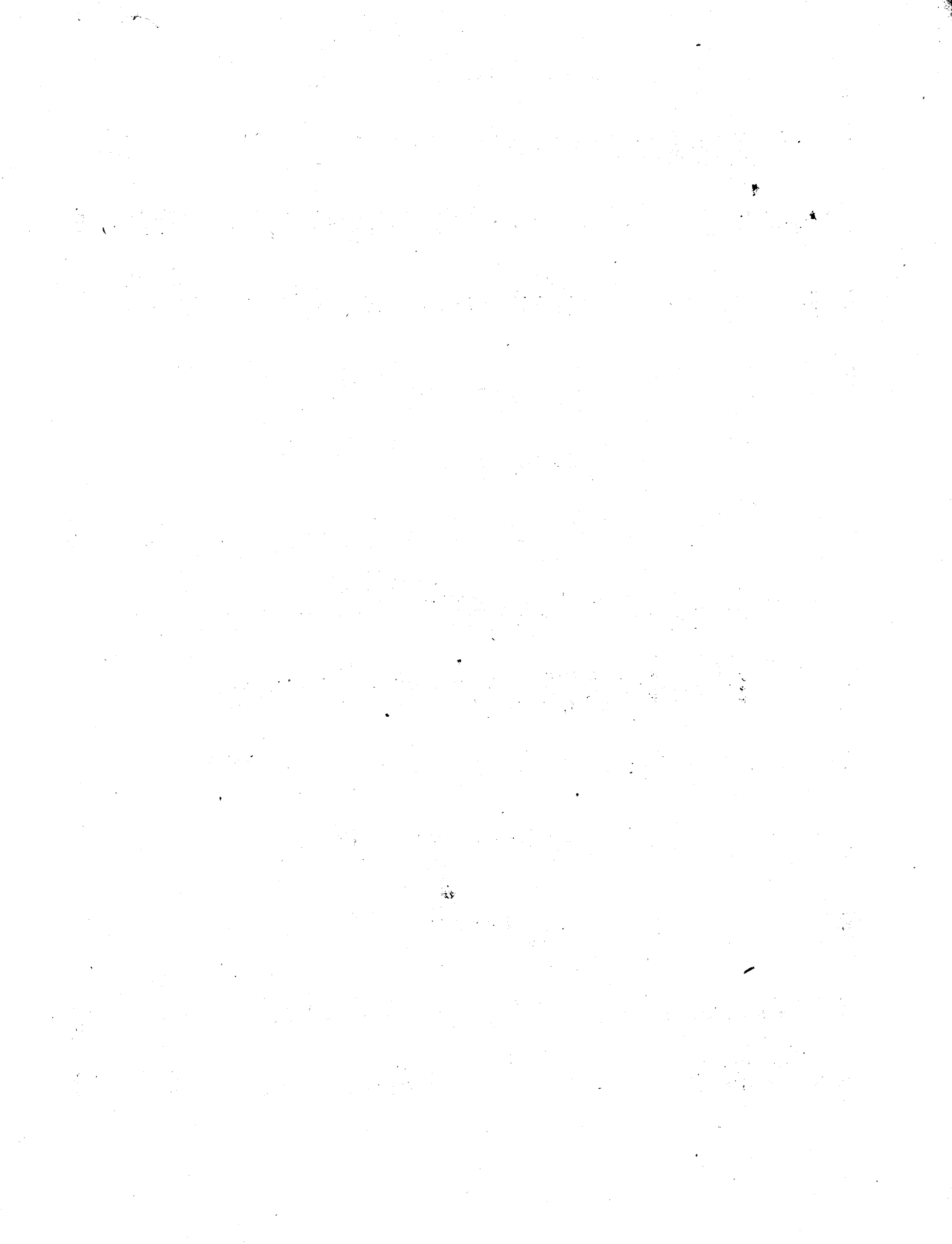
VIOLA.

arco. pizz. arco. *FF* *F* *p* *F* *F* *mezza voce.* *p* *F* *dol.* *F* *pizz.* *F*

ANDANTE. *p* *F* *p* *pp* *pp* *F* *p*

VIOLA.

The musical score for Viola on page 5 consists of 14 staves of music. The key signature is one sharp (F#) and the time signature is 3/4. The score includes various musical notations such as slurs, ties, and dynamic markings. The dynamics range from *pp* (pianissimo) to *f* (forte). A first ending is marked with "1^a Volta." and a second ending with "2^a Volta." The piece concludes with a double bar line.



VIOLA.

MINUETTO
Con fuoco.

Musical notation for the Minuetto section, measures 1-12. The score is in 3/4 time with a key signature of one flat. It features various dynamics including *f*, *p*, and *sf*. The notation includes slurs, accents, and repeat signs with first and second endings. Fingerings 1, 2, and 3 are indicated above notes in measures 4, 5, and 6 respectively.

TRIO.

Musical notation for the Trio section, measures 13-24. The key signature changes to two sharps (D major). The time signature is 3/4. Dynamics include *p*, *f*, and *sf*. The notation includes slurs, accents, and repeat signs with first and second endings. Fingerings 1 and 2 are indicated above notes in measures 14 and 15 respectively.

VIOLA.

All^o risoluto.

FINALE.

The musical score for the Viola part, titled "FINALE. All^o risoluto.", consists of 14 staves of music. The key signature is one sharp (F#) and the time signature is 8/50. The score includes various dynamic markings such as *ff*, *p*, *cres.*, *f*, *p*, *dol.*, and *ff*. There are also articulation marks like accents and slurs. The music features complex rhythmic patterns, including triplets and sixteenth-note runs. The piece concludes with a double bar line and a *p* dynamic marking.

VIOLA.

1329

The musical score for Viola, page 408, consists of 13 staves of music. The key signature begins with one flat (B-flat) and changes to two sharps (F# and C#) in the lower half of the page. The score includes various dynamic markings: *ff* (fortissimo), *pp* (pianissimo), *p* (piano), *F* (forzando), and *dol.* (dolando). Performance markings include first and second endings, accents, and a *cres.* (crescendo) marking. The music features complex rhythmic patterns, including sixteenth-note runs and slurred passages.