

# SONATE NO. 1

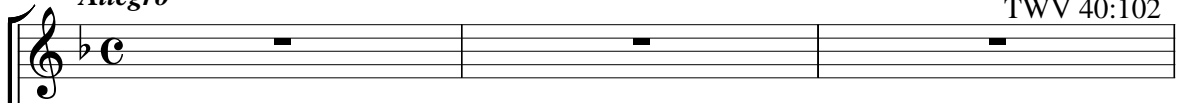
## 2. Movement

G. P. Telemann (1681-1767)

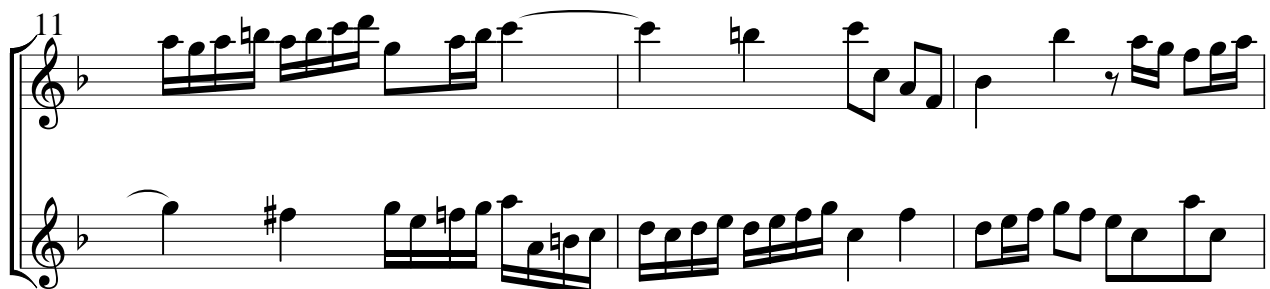
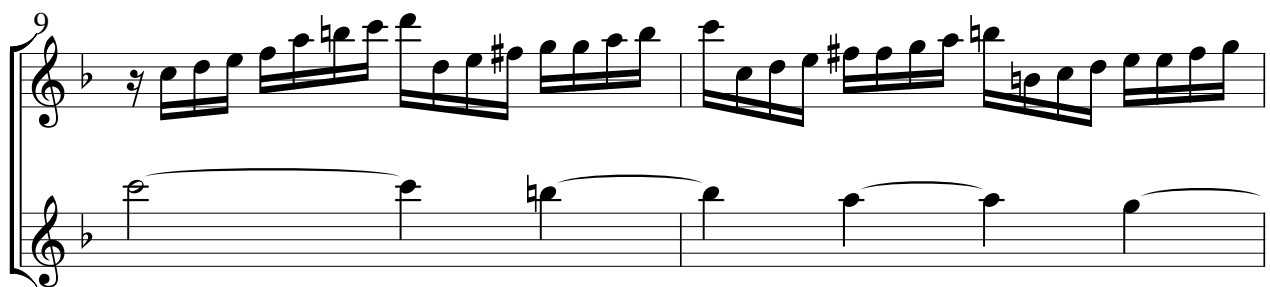
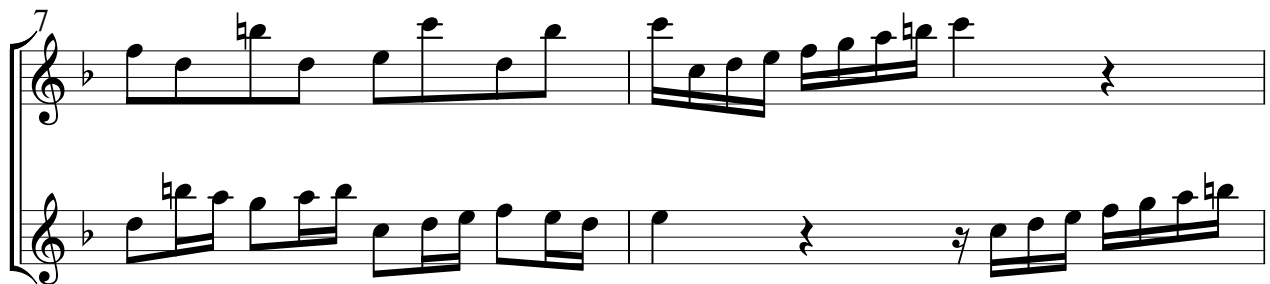
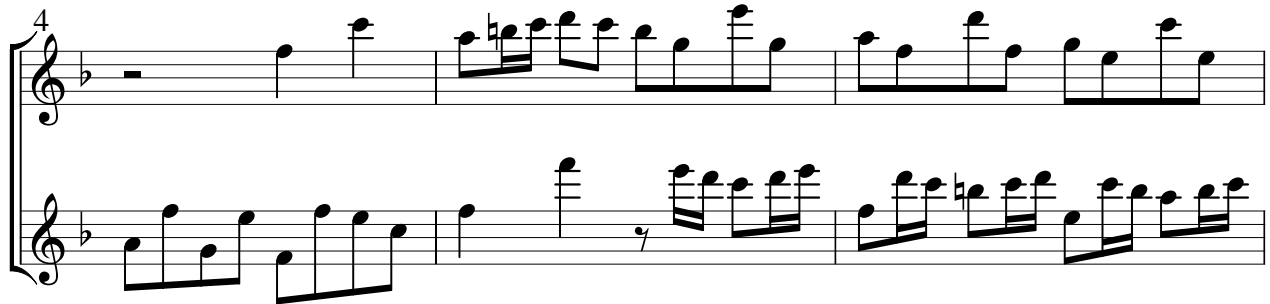
TWV 40:102

*Allegro*

Altflöte1



Altflöte2



2 st Movement from Sonate No. 1/ Telemann

14

Two staves of musical notation. The top staff begins with a treble clef and a key signature of one flat. It contains sixteenth-note patterns. The bottom staff continues the accompaniment with similar rhythmic figures.

17

Two staves of musical notation. Measure 17 features a prominent sixteenth-note run in the top staff. Measure 18 has a whole rest in the top staff. Measure 19 shows a sharp sign in the top staff.

20

Two staves of musical notation. Measure 20 has a whole rest in the top staff. Measure 21 features a sharp sign in the top staff. Measure 22 has a dense sixteenth-note texture in both staves.

23

Two staves of musical notation. Measures 23-26 show a continuous sixteenth-note pattern in the top staff, with the bottom staff providing a steady accompaniment.

27

Two staves of musical notation. Measure 27 has a whole rest in the top staff. Measure 28 features a sharp sign in the top staff. Measures 29-30 continue with sixteenth-note patterns in both staves.

2 st Movement from Sonate No. 1/ Telemann

29

Two staves of musical notation. The top staff begins with a treble clef, a key signature of one flat (B-flat), and a common time signature. It contains measures 29 and 30. Measure 29 starts with a quarter rest, followed by a quarter note G4 with a sharp sign, and a quarter rest. Measure 30 contains a series of eighth-note chords. The bottom staff continues the piece with a bass clef, containing measures 29 and 30 with various rhythmic patterns including eighth and sixteenth notes.

31

Two staves of musical notation. The top staff contains measures 31 and 32, featuring a quarter rest in measure 31 followed by eighth-note chords. The bottom staff continues with a bass clef, showing measures 31 and 32 with eighth-note patterns and a quarter rest in measure 32.

34

Two staves of musical notation. The top staff contains measures 34 and 35, primarily consisting of eighth-note chords. The bottom staff continues with a bass clef, showing measures 34 and 35 with eighth-note patterns and a quarter rest in measure 35.

37

Two staves of musical notation. The top staff contains measures 37 and 38, featuring a series of eighth-note chords in measure 37 and a half-note chord in measure 38. The bottom staff continues with a bass clef, showing measures 37 and 38 with eighth-note patterns and a quarter rest in measure 37.

39

Two staves of musical notation. The top staff contains measures 39 and 40, featuring a half-note chord in measure 39 and eighth-note chords in measure 40. The bottom staff continues with a bass clef, showing measures 39 and 40 with eighth-note patterns and a quarter rest in measure 39.

2 st Movement from Sonate No. 1/ Telemann

41

Two staves of musical notation in G minor. The upper staff begins with a treble clef and a key signature of one flat. The lower staff begins with a bass clef and a key signature of one flat. Both staves contain rhythmic patterns of eighth and sixteenth notes, with some rests indicated by a 'y' symbol.

44

Two staves of musical notation in G minor. The upper staff begins with a treble clef and a key signature of one flat. The lower staff begins with a bass clef and a key signature of one flat. Both staves contain rhythmic patterns of eighth and sixteenth notes.

46

Two staves of musical notation in G minor. The upper staff begins with a treble clef and a key signature of one flat. The lower staff begins with a bass clef and a key signature of one flat. Both staves contain rhythmic patterns of eighth and sixteenth notes, with some rests indicated by a 'y' symbol.

48

Two staves of musical notation in G minor. The upper staff begins with a treble clef and a key signature of one flat. The lower staff begins with a bass clef and a key signature of one flat. Both staves contain rhythmic patterns of eighth and sixteenth notes, with some rests indicated by a 'y' symbol.

50

Two staves of musical notation in G minor. The upper staff begins with a treble clef and a key signature of one flat. The lower staff begins with a bass clef and a key signature of one flat. Both staves contain rhythmic patterns of eighth and sixteenth notes, ending with a double bar line.