

# Kéra ndê Kurumí

Horn in F

Fantasia in C

Lucas Trevizan

Moderato ♩ = 100

9

17

24

31

39

48

57

*p*

*rit.*

*mf*

*a tempo*

*pp*

Adagio  $\text{♩} = 70$ 

66

*f*

74

*mf* *f* *p* *f* *p* *f* *p*

81

*f* *p* *f* *p* *pp*

88

97

106

*pp* *f* *crescendo poco a poco.*

113

*fff*

120

*ffff*

128

**Allegro** ♩ = 116

137

146

156

167

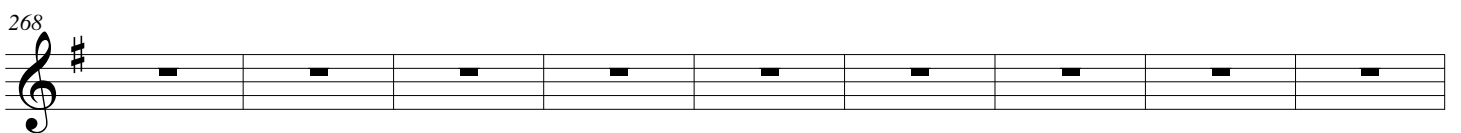
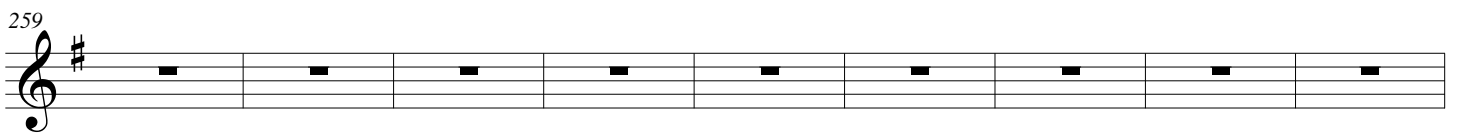
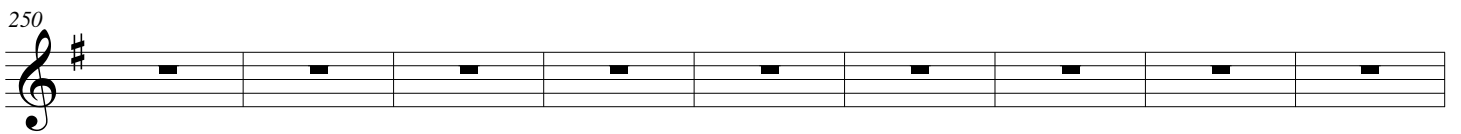
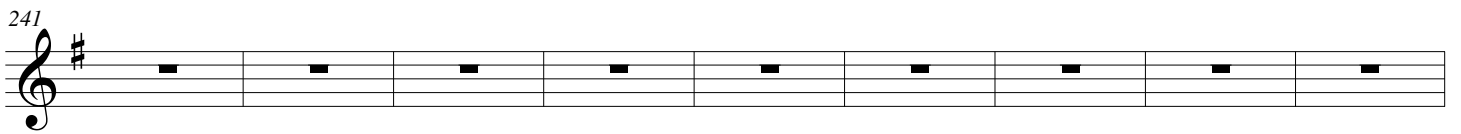
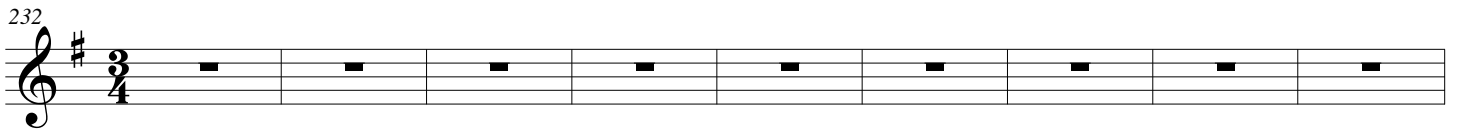
176

185

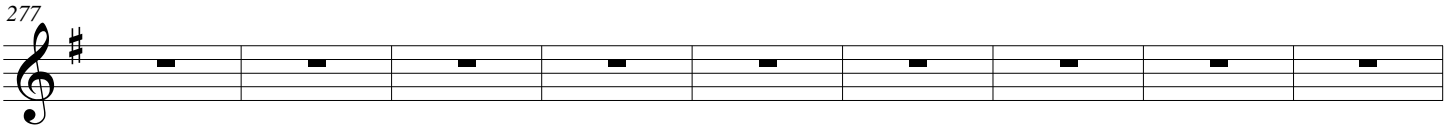
194



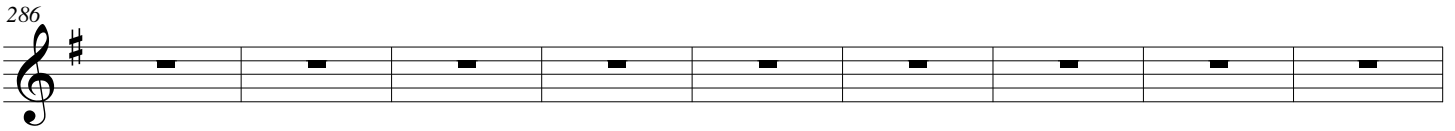
**Tempo di Valse** ♩ = 112



277

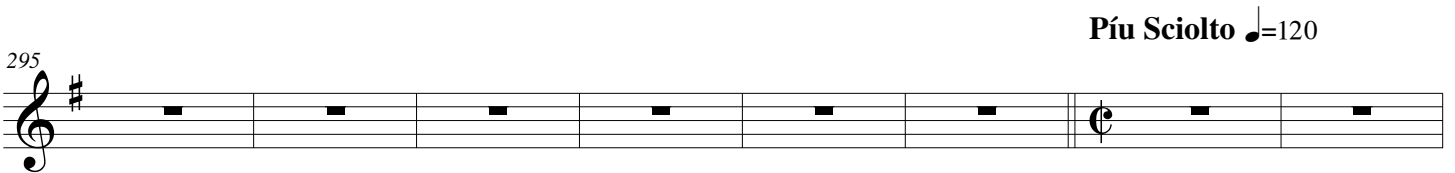


286

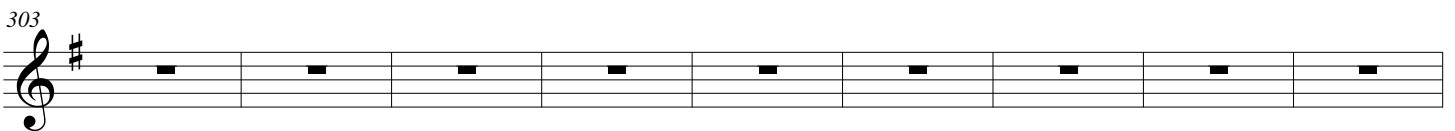


295

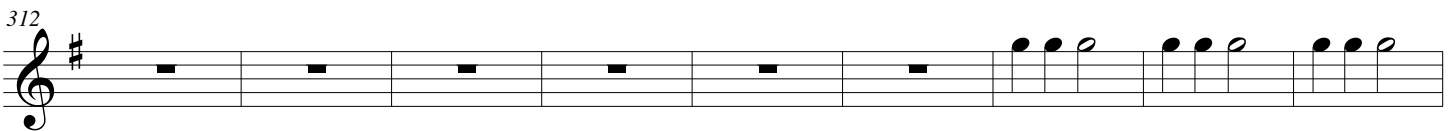
**Piu Sciolto** ♩=120



303

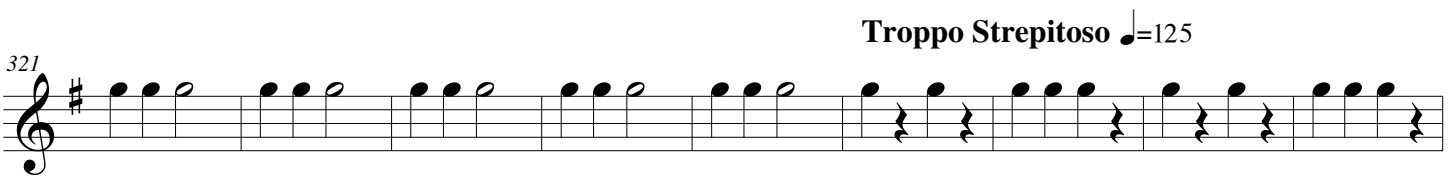


312

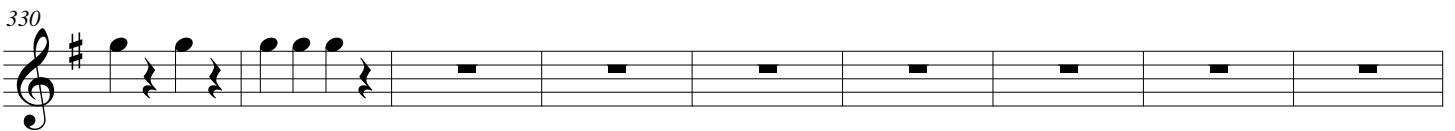


321

**Troppo Strepitoso** ♩=125

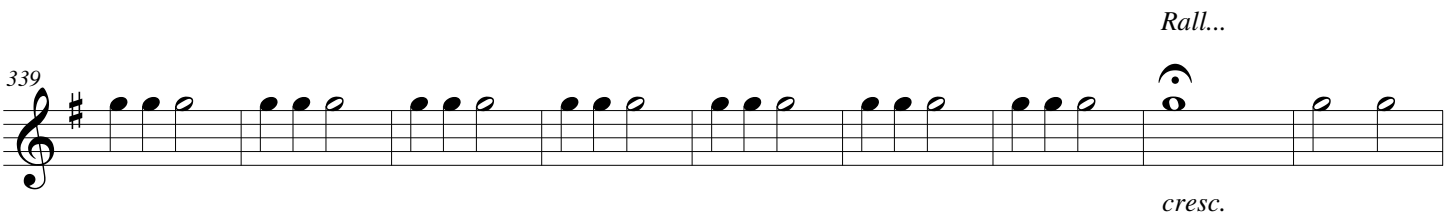


330



339

*Rall...*



*cresc.*

Kéra ndê Kurumí

*rubato*

348

Musical notation for Kéra ndê Kurumí, measure 348. The notation is on a single staff with a treble clef and a key signature of one sharp (F#). It begins with a whole note chord consisting of F#4 and C5. The second measure contains a single eighth note G4 with an accent (>) above it. The third measure contains a quarter rest. The fourth measure contains a quarter note G4. The piece concludes with a double bar line.

*fff*