



# TWO SONGS

With Piano Accompaniment

By

## OLEY SPEAKS

### *The Secret*

High in F      Low in D



Price, 60 cents, net



### *Serenade*

High in B $\flat$       Low in G



Price, 75 cents, net

## G. SCHIRMER

NEW YORK • BOSTON



# Serenade

Frederick H. Martens

Oley Speaks

Andante grazioso

Voice

Piano

*mp*

*p.*

*rit.*

*mp*

Watch o'er her ten-der-ly, stars of the night,

*a tempo*

*pp*

*(sotto voce)*

Watch o'er her, star-eyes that close, watch o'er her; Were they to o-pen, they'd

*poco cresc.* *rit. ten.*

dim your clear light, The lov-er who looks in them knows. Oh,

*poco cresc.* *rit. col canto*

*a tempo*

watch o'er her ten der-ly, stars of the night, While in my song there is

*a tempo*

*f*

told *f* Ev-'ry soft plea that her love mine re-quite,

*cresc.* *f*

*rit. e dim.* *a tempo*

All a fond heart may hold. —

*rit.* *p a tempo*

Watch o'er her ten - der - ly,

*rit.* *p a tempo*

*sotto voce*

stars of the night, Dream-ing she dim-ples and smiles, watch o'er her;

*cresc.*

Mu-sic is lend-ing her dreams its de-light, And my voice her slum-ber be -

*rit. ten. a tempo*

guiles. Oh, watch o'er her ten-der-ly, stars of the skies,

*rit. col canto a tempo*

*f*

While in my song there are told Prayers that she wake, and that

*f*

*ten.* *molto rit. e dim.*

love's Pa - ra - dise In her eyes I be - hold, ——— that

*rit.* *molto rit. e dim.*

*p.* *ppp.*

*meno mosso* *rit. e dim. al fine*

love's Pa - ra - dise in her eyes I be -

*meno mosso* *rit. e dim. al fine*

hold! ———

*pp* *morendo* *ppp*

*l.h.*

*ppp.*

# ANOTHER SPEAKS SUCCESS

## "SYLVIA"

Lyric by  
**Clinton Scollard**

Music by  
**Oley Speaks**

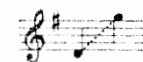
LOW IN  
E<sub>2</sub>



MED. IN  
F



HIGH IN  
G



Andantino espressivo

Voice

Piano

*mp*  
*con pedale*

*mp*

Syl- via's hair is like the night, Touched with glanc- ing star- ry beams,

Such a face as drifts thro' dreams, This is Syl- via to the sight

Copyright, 1914, by G. Schirmer

*Sung with great success by*  
**Louis Graveure**

G. SCHIRMER

3 EAST 43rd STREET

NEW YORK