

**Christoph
Graupner**

Bass-Arien

mit

obligatem Fagott

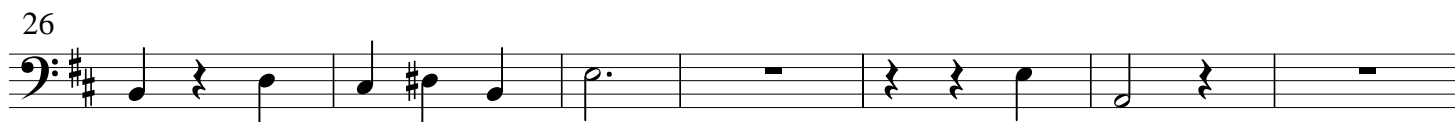
Violoncello

Wie wunderbar ist Gottes Güte'

GWV 1103/17

Christoph Graupner

Aria 1



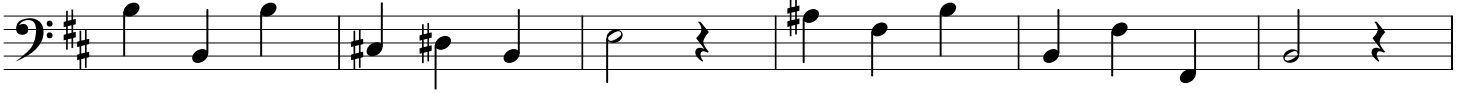
52



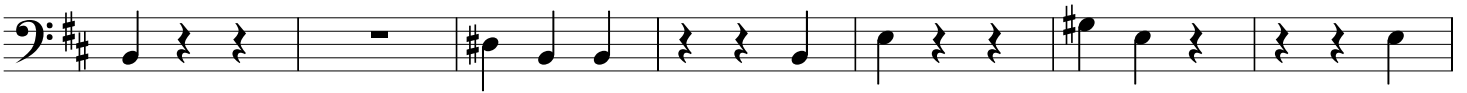
59



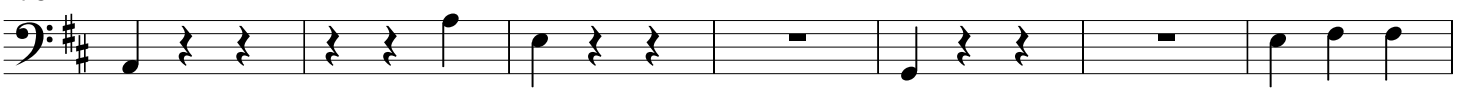
65



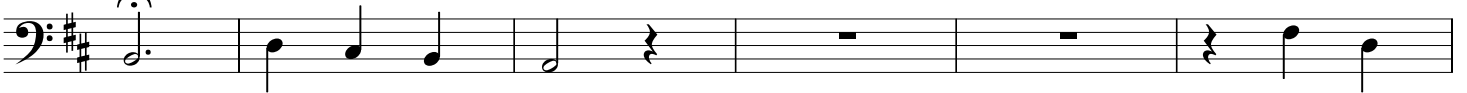
71



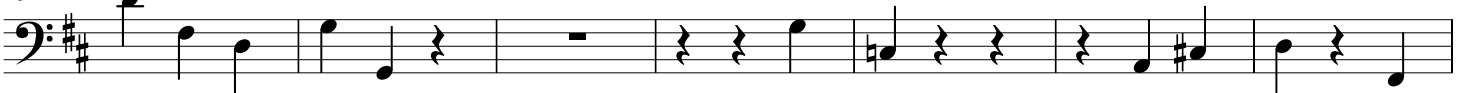
78



85



91



98



103



108



da capo

Aria 2



5



9



13



17



21



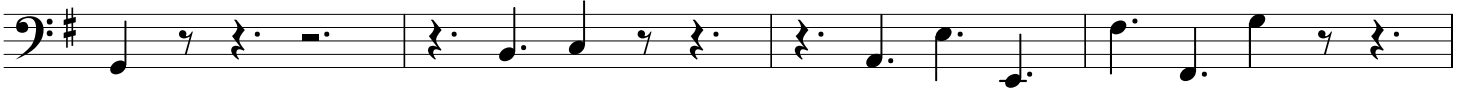
25



29



33



37



41



45



49



da capo

Choral



Fahre auf in die Höhe

1146/46

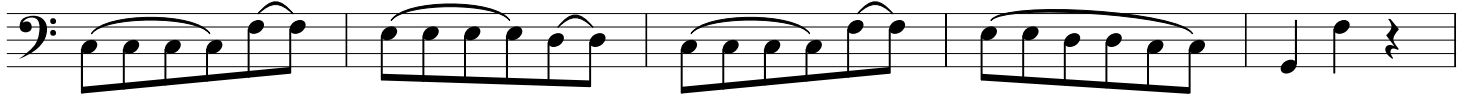
Dictum



Arie



6



11



16



21



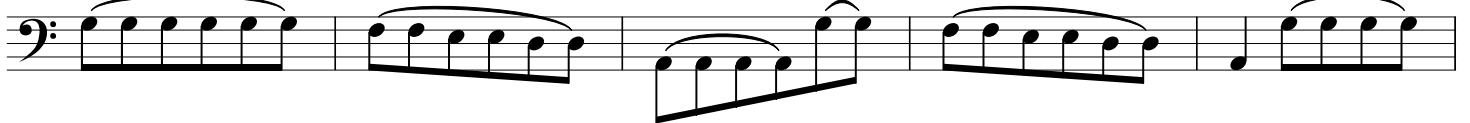
26



31



36



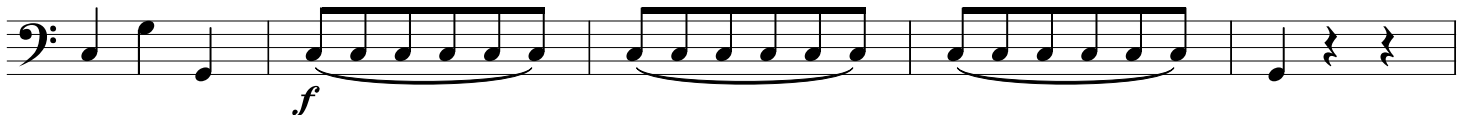
41




46



51

*f*

56



60

65

70

75

80

85

Detailed description: This section contains eight staves of musical notation in bass clef. Measures 56-59 show a continuous eighth-note pattern. Measure 60 has a half note followed by a quarter rest. Measure 61 has a quarter note followed by a quarter rest. Measure 62 has a quarter note followed by a quarter rest. Measure 63 has a quarter note followed by a quarter rest. Measure 64 has a quarter note followed by a quarter rest. Measure 65 has a quarter note followed by a quarter rest. Measure 66 has a quarter note followed by a quarter rest. Measure 67 has a quarter note followed by a quarter rest. Measure 68 has a quarter note followed by a quarter rest. Measure 69 has a quarter note followed by a quarter rest. Measure 70 has a quarter note followed by a quarter rest. Measure 71 has a quarter note followed by a quarter rest. Measure 72 has a quarter note followed by a quarter rest. Measure 73 has a quarter note followed by a quarter rest. Measure 74 has a quarter note followed by a quarter rest. Measure 75 has a quarter note followed by a quarter rest. Measure 76 has a quarter note followed by a quarter rest. Measure 77 has a quarter note followed by a quarter rest. Measure 78 has a quarter note followed by a quarter rest. Measure 79 has a quarter note followed by a quarter rest. Measure 80 has a quarter note followed by a quarter rest. Measure 81 has a quarter note followed by a quarter rest. Measure 82 has a quarter note followed by a quarter rest. Measure 83 has a quarter note followed by a quarter rest. Measure 84 has a quarter note followed by a quarter rest. Measure 85 has a quarter note followed by a quarter rest.

Choral da capo

Largo



5

9

13

17

20

Detailed description: This section is titled 'Choral' and 'Largo'. It begins with a bass clef, a key signature of one flat (B-flat), and a common time signature (C). The first staff shows a half note followed by a quarter rest. The second staff shows a quarter note followed by a quarter rest. The third staff shows a quarter note followed by a quarter rest. The fourth staff shows a quarter note followed by a quarter rest. The fifth staff shows a quarter note followed by a quarter rest. The sixth staff shows a quarter note followed by a quarter rest. The seventh staff shows a quarter note followed by a quarter rest. The eighth staff shows a quarter note followed by a quarter rest. The ninth staff shows a quarter note followed by a quarter rest. The tenth staff shows a quarter note followed by a quarter rest. The eleventh staff shows a quarter note followed by a quarter rest. The twelfth staff shows a quarter note followed by a quarter rest. The thirteenth staff shows a quarter note followed by a quarter rest. The fourteenth staff shows a quarter note followed by a quarter rest. The fifteenth staff shows a quarter note followed by a quarter rest. The sixteenth staff shows a quarter note followed by a quarter rest. The seventeenth staff shows a quarter note followed by a quarter rest. The eighteenth staff shows a quarter note followed by a quarter rest. The nineteenth staff shows a quarter note followed by a quarter rest. The twentieth staff shows a quarter note followed by a quarter rest.

Auf Zion!

GWV 1101/53

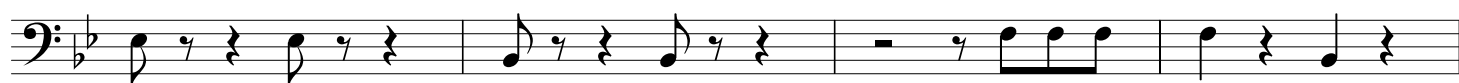
Aria



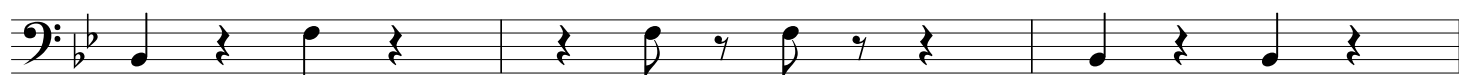
5



9



13



16



19



22



25



28



31



34

37

41

45

49

52

55

58

61

65

da capo