

3 German Dances

Flute

W. A. Mozart
arr. Jane Thomas

No. 1

First system (measures 1-8): Treble clef, key of D major (two sharps), 3/4 time. Starts with a forte (*f*) dynamic. The melody consists of eighth and quarter notes with some slurs.

Second system (measures 9-17): Treble clef, key of D major. Starts with a piano (*p*) dynamic, followed by a forte (*f*) dynamic. Ends with a repeat sign and the word "Fine".

Trio

Third system (measures 18-26): Treble clef, key of D major. Starts with a piano (*p*) dynamic. The melody features many beamed eighth notes and slurs. Ends with a repeat sign and the instruction "D.C. al Fine".

No. 2

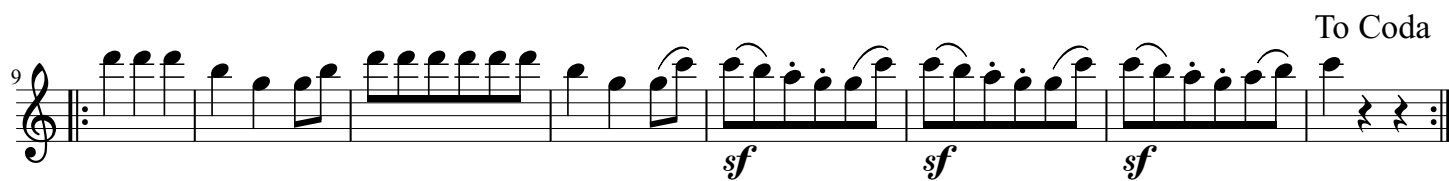
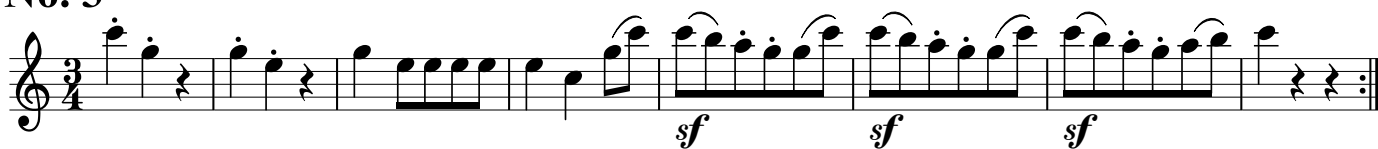
First system (measures 1-8): Treble clef, key of D major, 3/4 time. Starts with a forte (*f*) dynamic. The melody includes trills (*tr*) and slurs.

Second system (measures 9-16): Treble clef, key of D major. Ends with a repeat sign and the word "Fine".

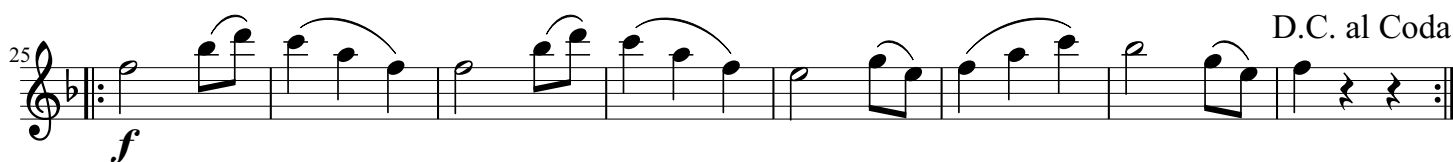
Trio

Third system (measures 17-24): Treble clef, key of D major. Starts with a piano (*p*) dynamic. The melody features many beamed eighth notes and slurs. Ends with a repeat sign and the instruction "D.C. al Fine".

No. 3



Trio



Coda

