

# 3 German Dances

## Violin 1

W. A. Mozart  
arr. Jane Thomas

### No. 1

Musical notation for No. 1, measures 1-17. The key signature is one sharp (F#) and the time signature is 3/4. The piece begins with a forte (*f*) dynamic. The melody consists of eighth and quarter notes. Measure 17 ends with a repeat sign and a 'Fine' instruction.

### Trio

Musical notation for No. 1, measures 18-26. The key signature is one sharp (F#) and the time signature is 3/4. The piece begins with a piano (*p*) dynamic. The melody consists of eighth and quarter notes. Measure 26 ends with a repeat sign and a 'D.C. al Fine' instruction.

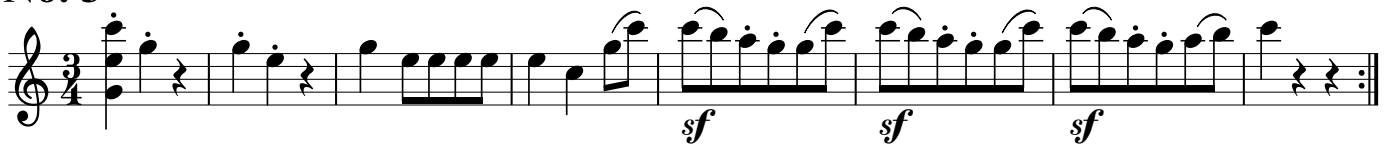
### No. 2

Musical notation for No. 2, measures 1-7. The key signature is one sharp (F#) and the time signature is 3/4. The piece begins with a forte (*f*) dynamic. The melody consists of eighth and quarter notes. Measure 7 ends with a repeat sign and a 'Fine' instruction.

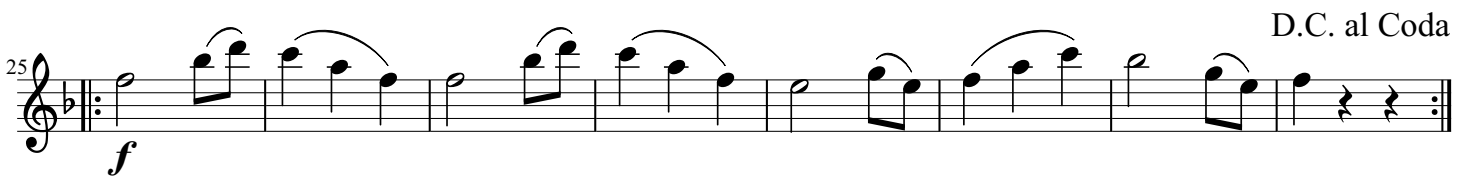
### Trio

Musical notation for No. 2, measures 8-24. The key signature is one sharp (F#) and the time signature is 3/4. The piece begins with a piano (*p*) dynamic. The melody consists of eighth and quarter notes. Measure 24 ends with a repeat sign and a 'D.C. al Fine' instruction.

# No. 3



## Trio



## Coda

