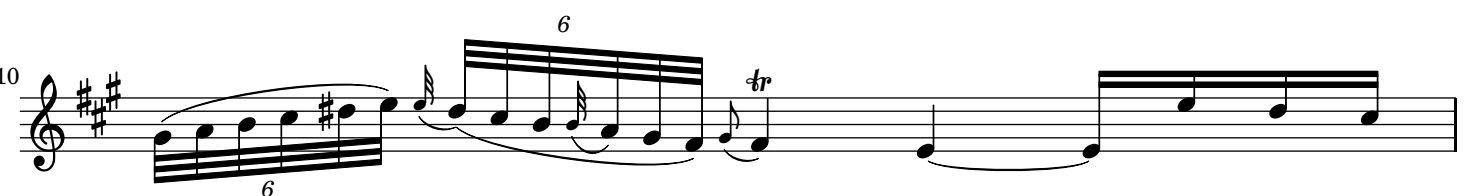
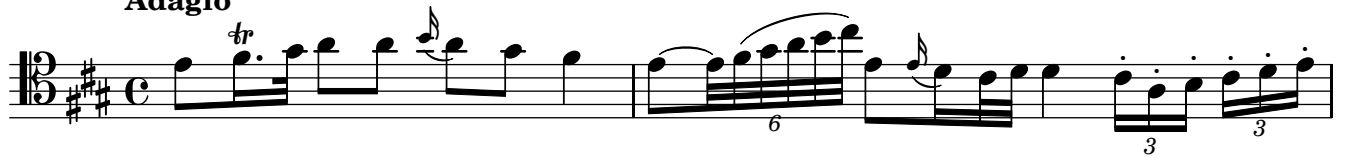


Sonata n°4 - G.4

Violoncelle

Luigi BOCCHERINI
(1743-1805)

Adagio



11

12

13

15

17

19

20

21

Allegro

26

29

32

35

38

41

44

46

48

50

53

56

Musical score for Violoncelle, measures 58-82. The score is written in treble clef (measures 58-66) and bass clef (measures 67-82). The key signature is three sharps (F#, C#, G#). The time signature is 3/4. The score includes various musical notations such as trills (tr), triplets (3), and slurs. The piece concludes with a final cadence in measure 82.

Measures 58-66: Treble clef. Measures 58-60: Trills on G4 and A4. Measures 61-62: Trills on G4 and A4. Measures 63-64: Trills on G4 and A4. Measures 65-66: Trills on G4 and A4.

Measures 67-82: Bass clef. Measures 67-68: Trills on G3 and A3. Measures 69-70: Trills on G3 and A3. Measures 71-72: Trills on G3 and A3. Measures 73-74: Trills on G3 and A3. Measures 75-76: Trills on G3 and A3. Measures 77-78: Trills on G3 and A3. Measures 79-80: Trills on G3 and A3. Measures 81-82: Trills on G3 and A3.

Affettuoso

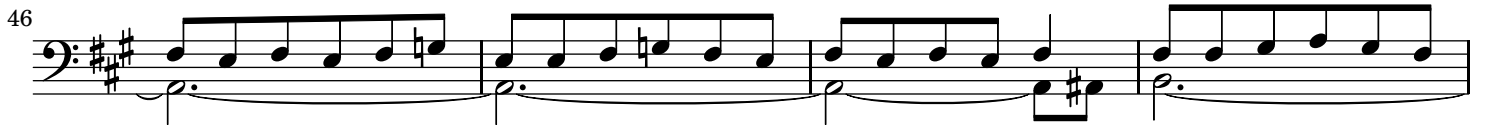
37



42



46



50



55



59



64



68



72



76



80

