

# Sinfonia in Do maggiore [1799]

## Violino principale II

L. Boccherini (1743-1805)

[1.] Grave tacet

[2.] All[egr]o e con Imperio

6 *ff*

14 *f* *pp*

19 *f*

22 *ff*

26 *pp*

32 *p* *ff*

37 *pp*

42 *ff*

47 *f* *ff*

52 *pp* **2**

59 *ff* *Soli* *p*

64

71

77 *pp* **3** **4**

86 *Soli* *tr.*

93 *f* *f* *f* *f*

100 *f* *f* *Poco cres* *tr.*

108 *tr.* *tr.* *tr.* *tr.*

113

118 *dolcis[simo]* *dolce* *4* *tr.* *tr.* *tr.* *con grazia*

129 *tr.* *tr.* *tr.*

133 *p.mo sempre*

140 *3*

145

150 *Tutti* *f.mo sempre*

155

158

163 *f*

168 *pp*

173 *pp* 10 *p*

189 *pp* 6

202 *f* *f* *f*

209 *f* *f* *f* *Poco cres*

216 *tr* *tr* *tr* *tr* *tr*

222 *tr* *dolce*

227 *dolcis[simo]* *4* *p* *tr* *tr* *con grazia*

238 *tr* *tr* *tr* *tr* *tr*

242 *tr* *pp*

248

254 *Tutti*

259 *ten* *18* *Tutti* *ff* *2*

284 *p* *ff*

289 *ff*

## [3.] Grave

Musical score for Violino principale II, measures 1-60. The score is in G major (one flat) and 3/4 time. It features various dynamics and articulations.

Measures 1-6: *f* (forte), *pp* (pianissimo), *f* (forte).

Measure 7: *pp* (pianissimo).

Measures 17-19: *sfor* (sforzando), *p* (piano), *sfor* (sforzando), *pp* (pianissimo).

Measures 30-33: *f* (forte), *tr* (trills), *dolcis[simo]* (dolcissimo).

Measures 34-37: *pp* (pianissimo).

Measures 38-41: *espres[sivo]* (espressivo), *espres[sivo]* (espressivo), *ff* (fortissimo).

Measures 42-46: *pp* (pianissimo).

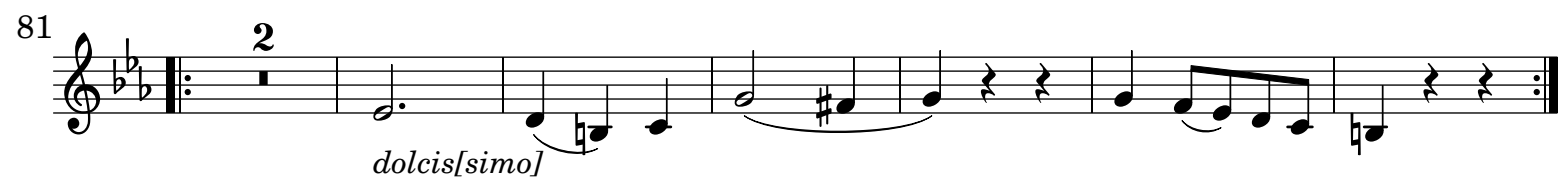
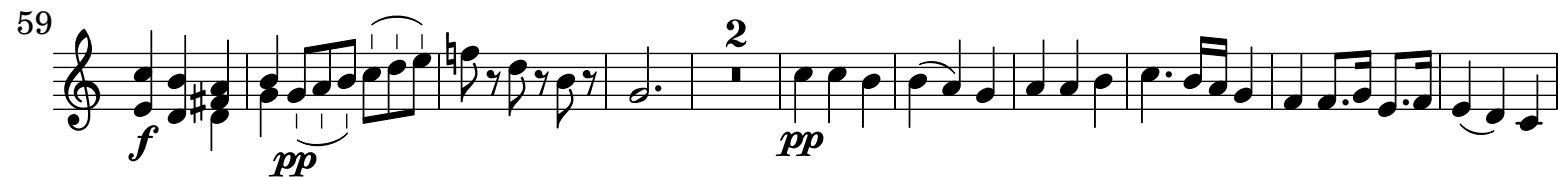
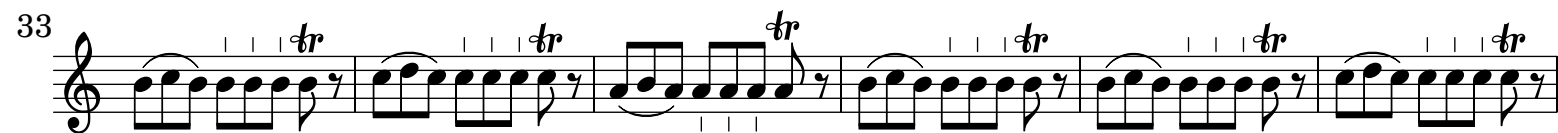
Measures 47-50: *dolcis[simo]* (dolcissimo).

Measures 51-54: *pp* (pianissimo).

Measures 55-58: *pp* (pianissimo).

Measures 59-60: *pp* (pianissimo).

## [4.] All[egr]o



97 *dolcis[simo]* *ff*

107 *dolcis[simo]*

117 *ff* *tr* *pp*

128 *dolcis[simo]* *f*

139 *dolcis[simo]* *f* *p*

150 *p* *p* *Soli*

160 *f* *pp* *f*

179 *f* *f* *p*

189 *f* *pp* *f*

208 *f* *f* *pp* *soave e sciolte*

217 *f*