

Nisi Dominus. v. 3. d. sig. Barbieri.

Tenore Concerto: |

All.^o molto.

All.^o Canto. 11. 16 $mi = si$

Dominus cu sto = die rit cu = =

tu sem fr ustra vi gilat

fr ustra vi gilat qui cu =

st odit e = = am 15.

cu m de derit di = l actis

di = l actis su is so mnem.

Ec cce he re re ditas he re = = di tas

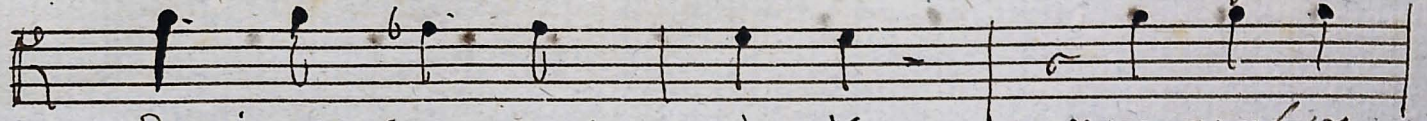
Do mini fi lij me rces fr uctus

ven = = fr is 13.

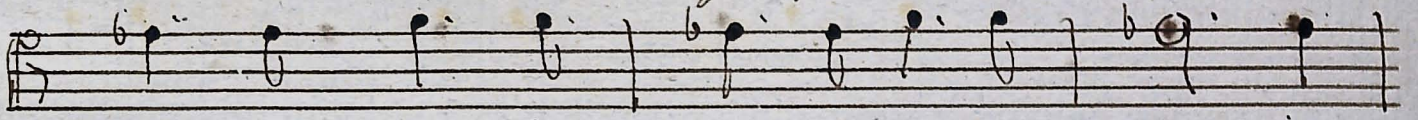
12/14



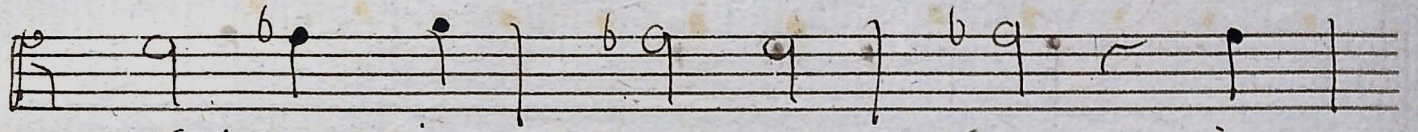
Beatus - vir qui implevit desi =



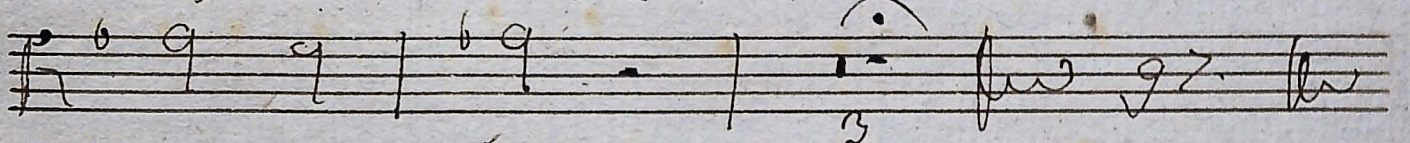
derium suum ex ipso non confun =



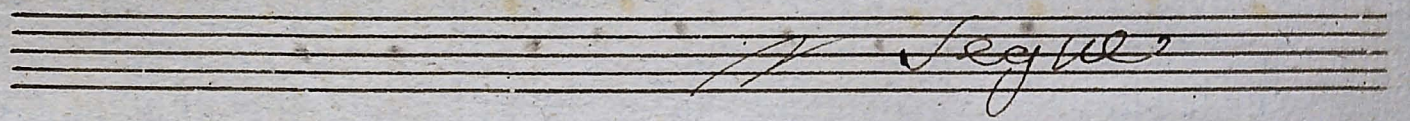
detur cum loque = tur ini = micin



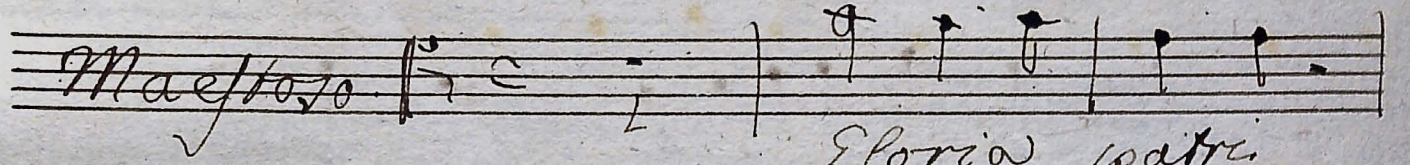
tuus in por = = tas in



por = = tas

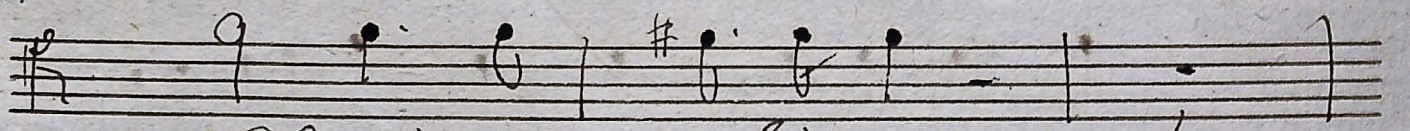


Segue

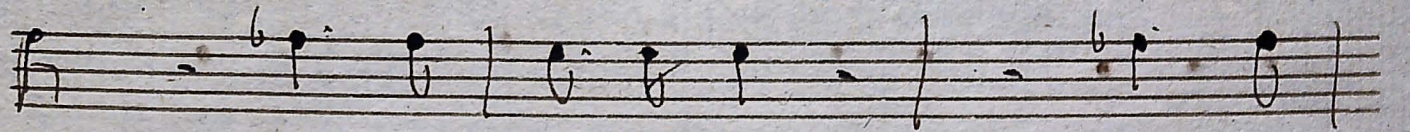


Maestoso

Gloria patri

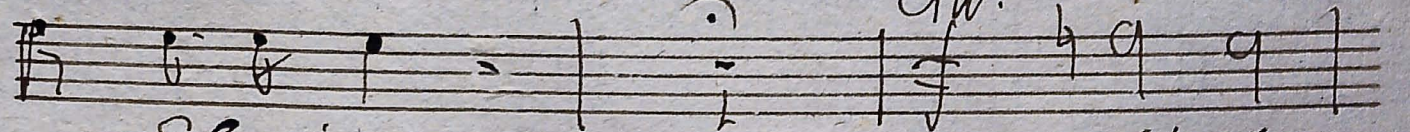


Gloria Filio



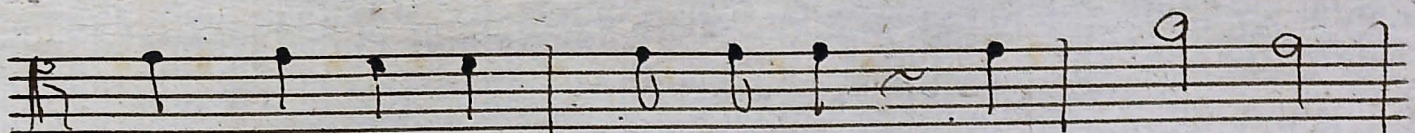
et spi = ritui

sancto

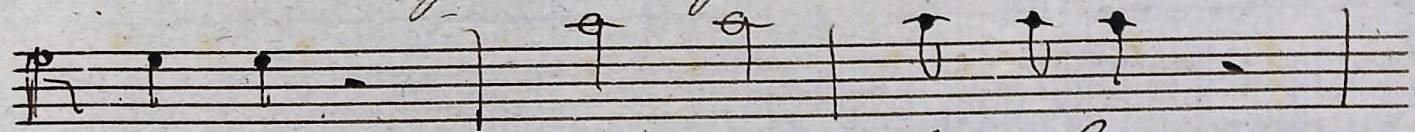


Gloria

vicit



erat in prin = cipio et nunc et



Semper et in seculis



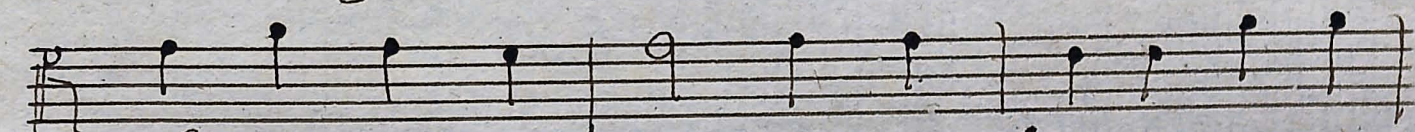
seculorum amen amen et in



seculis seculorum seculorum a =



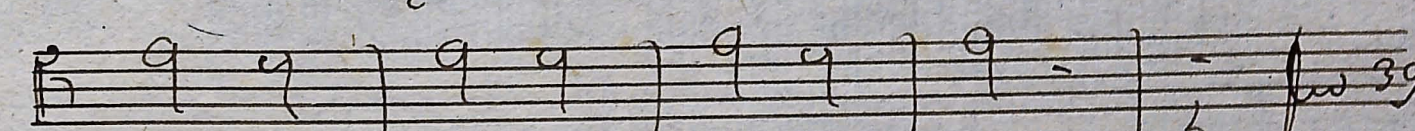
men seculorum amen amen seculorum



orum a = men seculorum amen



amen seculorum a = men a =



men amen amen amen



Paul Deo