

Ouverture "La Bizarre"

G. Ph. Telemann

TWV55 : G 2

Bearbeitung für 4 Gitarren

Anton Höger

1. (Ouverture)

Git.4
6=Ré

8

6

12

17

24

27

30

2
35

38

40

42

47

52

58

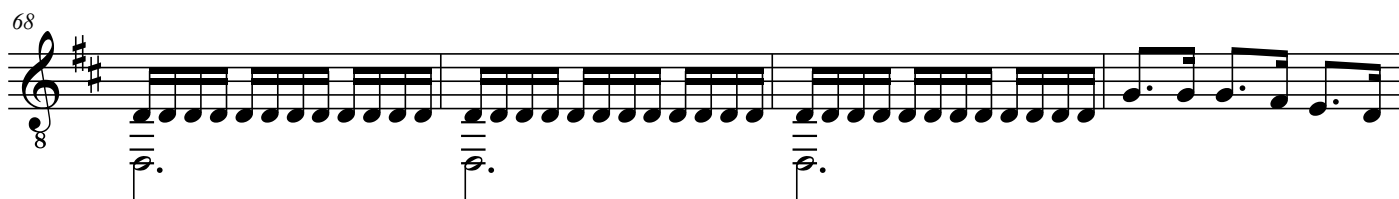
61

64

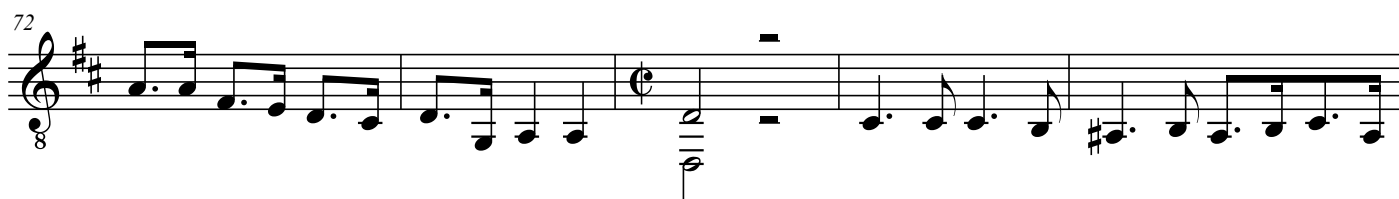
66



68



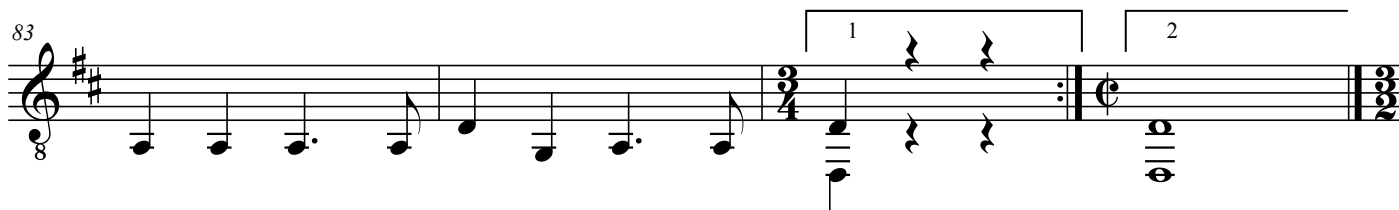
72



77



83



2. Courante

87

91

94

98

101

104

108

111

The image displays a musical score for the second movement, 'Courante', from Telemann's Overture TWV55 G2 for guitar. The score is written in treble clef with a key signature of two sharps (F# and C#) and a 3/8 time signature. It consists of eight staves of music, each beginning with a measure number: 87, 91, 94, 98, 101, 104, 108, and 111. The notation includes various rhythmic values such as eighth and sixteenth notes, rests, and repeat signs. The piece concludes with a double bar line and a repeat sign at the end of the eighth staff.

3. Gavotte en Rondeau

115

121

126

132

137

142

148

153

158

4. Branle

164

168

173

177

182

Detailed description: This section contains five staves of musical notation for the piece '4. Branle'. Each staff begins with a treble clef, a key signature of two sharps (F# and C#), and a common time signature (C). The first staff (measures 164-172) features a sequence of eighth notes. The second staff (measures 168-172) continues this sequence. The third staff (measures 173-176) includes a repeat sign at the beginning. The fourth staff (measures 177-181) continues the eighth-note pattern. The fifth staff (measures 182-185) concludes the piece with a double bar line and repeat dots.

5. Sarabande

186

191

196

Detailed description: This section contains three staves of musical notation for the piece '5. Sarabande'. Each staff begins with a treble clef, a key signature of two sharps (F# and C#), and a common time signature (C). The first staff (measures 186-190) features a sequence of quarter notes with some rests. The second staff (measures 191-195) includes a repeat sign at the beginning and a slur over a group of notes. The third staff (measures 196-200) concludes the piece with a double bar line and repeat dots.

6. Fantasie

202

207

212

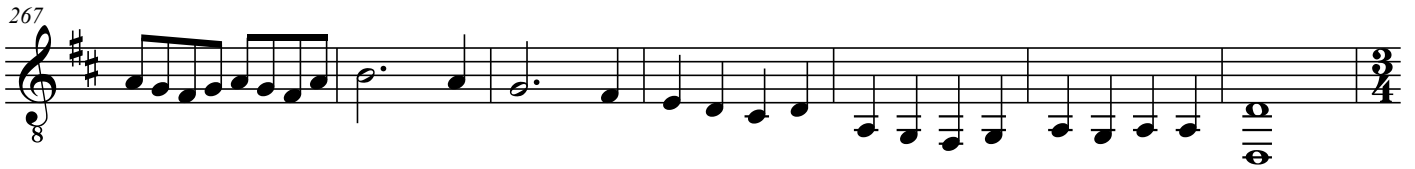
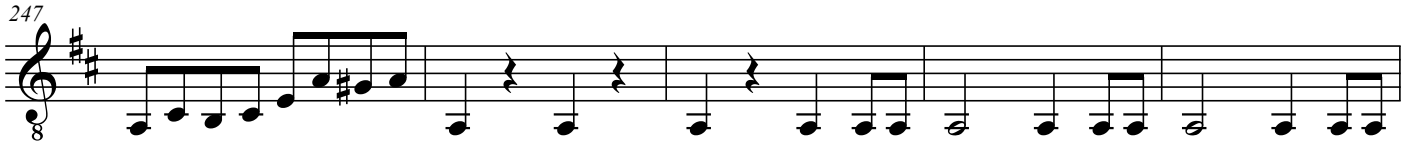
218

225

230

236

242



7. Menuet

(1. Menuet)



295

2. Menuet
Doucement

300

308

316

324

Menuet 1. Da capo

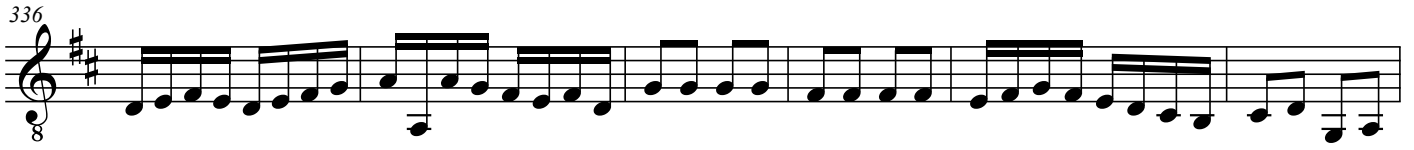
The image shows a musical score for a piece titled "2. Menuet Doucement". The score is written in treble clef with a key signature of two sharps (F# and C#) and a time signature of 3/4. The piece is in 8va. The score is divided into five systems of music. The first system starts at measure 295 and ends at measure 300. The second system starts at measure 300 and ends at measure 308. The third system starts at measure 308 and ends at measure 316. The fourth system starts at measure 316 and ends at measure 324. The fifth system starts at measure 324 and ends at measure 324. The score includes various musical notations such as notes, rests, and bar lines. There are also some performance instructions like "1", "2", "3", and "Menuet 1. Da capo".

8. Rossignol

10
330



336



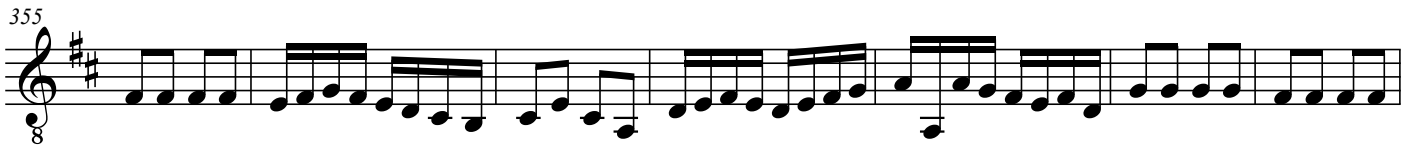
342



348



355



362



369



375



382

