

Andante. E^{\flat} f $\text{||} \text{ } \text{g.}$ | - 9 | #9 9 | 9 d |

ve = xilla regif

E^{\flat} | 9 9 | 9 9 | 9 9 | 9 9 |

re = gif prodeunt

ful = get crucif

E^{\flat} | 9 9 | #9 9 | 9 9 | 9 9 |

fulget Cruci misterium

qua

E^{\flat} | 9 9 | 9 9 | 9 9 | 9 9 |

vita vita morte qua vi = ta

mortem

E^{\flat} | 9 9 | 9 9 | 9 9 | 9 9 |

per tu = lit et mortem

et mortem

E^{\flat} | 9 9 | 9 9 | 9 9 | 9 9 |

et mortem vitam protu lit

E^{\flat} | 9 9 | 9 9 | 9 9 | 9 9 |

Quez vulne = nata

quez vulne =

E^{\flat} | 9 9 | 9 9 | 9 9 | 9 9 |

ra = ta Lance = ae

mucro = re

E^{\flat} | 9 9 | 9 9 | 9 9 | 9 9 |

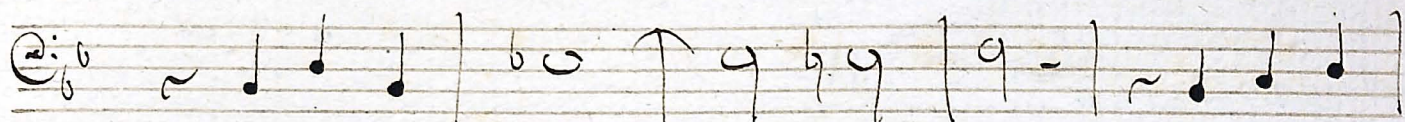
di = ro criminum

di = ro diro

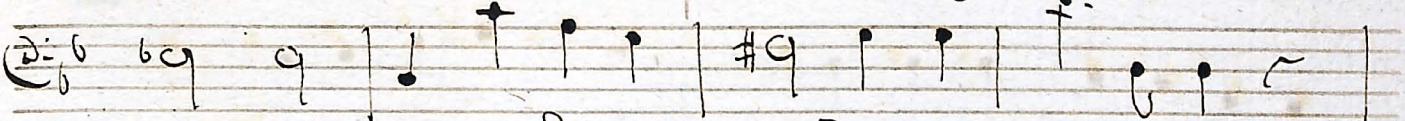
E^{\flat} | 9 9 | 9 9 | 9 9 | 9 9 |

crimi = num ut nos

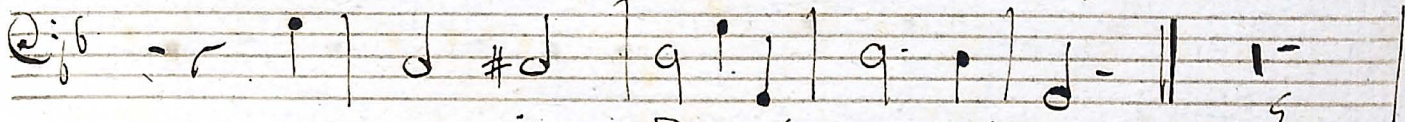
vobis



Lava ret sor = = dibus manavit

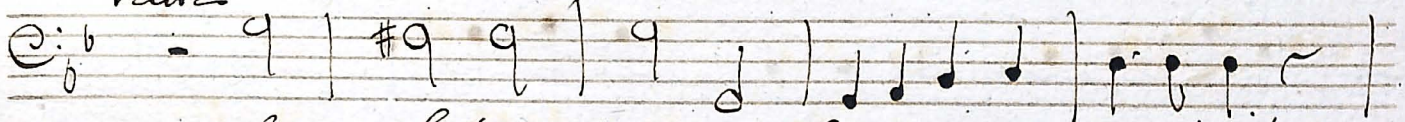


unda un = da undas et sanguine

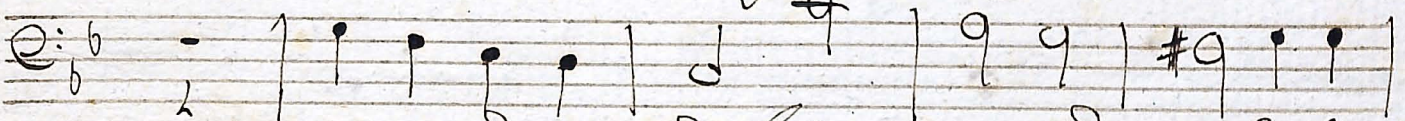


ma = navit undas et sanguine

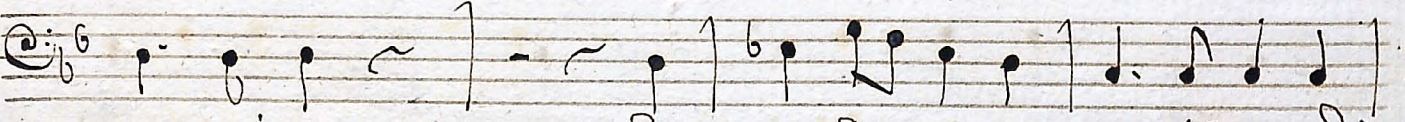
Tutti



Im = pletas sunt impletas suntque concinit



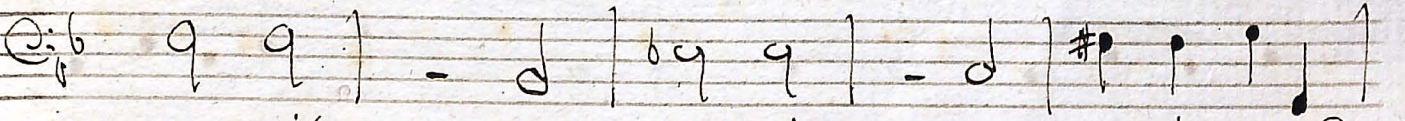
Da = vid fi = delis David fideli



Carmine dicen = do nati = onibus di =



cendo di = = cendo nati = onibus re =



gnavit re = gnavit re = gnavit a Li =



gno Deus.

Arbor decora et fuligas: Tacet.

Tutti

Primo Tempo. $\text{C}\flat$ f 1-5 | - 9 | #9 9 | 9 9

Be = ata cuius

$\text{C}\flat$ cu = ius brachiis pre = ti = z

um pe = pendit pependit seculi ita =

$\text{C}\flat$ te = = ra facta ita = terra facta

corpo = ris tu = litque tulitque

$\text{C}\flat$ predam tartu = ri tulitque

predam predam tartu = ri

$\text{C}\flat$ unica

Crux ave = spes

$\text{C}\flat$ unica pasca = le que fert gaudium.

Largo. $\text{C}\flat$ $\frac{3}{4}$ 1-5 | 9 | b 9 | 9 9 | 9 9 | 9 9

solipiano

Crux ave = spes

$\text{C}\flat$ unica pasca = le que fert gaudium.

Crux ave spes

$\text{C}\flat$ unica pasca = le que fert gaudium.

Voltri

4

Pascale Pascale que ter =
 = = gaudi = um
 re = que de le Crimina
 de = le Crimina re =
 que de le =
 = = crimi = na

Tutti

Primo Tempo. E^{\flat} $\frac{4}{6}$ | - 9 |

son = sa = lutis sa = lutis
 Trinitas colla = udet

omnis colla = udet omnis

spiritu quibus Crucif viz

portam Lar = girij adde

premi = um. a =

men.

Lucy Deo