

SONATE DA CAMERA A TRE

Violoncello

Sonata I

Antonio Vivaldi, Op. 1

PRELUDIO

Grave

Musical notation for the Preludio section, measures 1-14. The notation is in bass clef with a key signature of one flat (B-flat) and a common time signature (C). The music begins with a half note G2, followed by quarter notes A2, B-flat2, and C3. The melody continues with quarter notes D3, E3, F3, and G3. The piece concludes with a half note G3. Dynamic markings include *piano* at measure 14 and *forte* at measure 14.

ALLEMANDA

Allegro

Musical notation for the Allemanda section, measures 1-25. The notation is in bass clef with a key signature of one flat (B-flat) and a common time signature (C). The piece starts with a half note G2, followed by quarter notes A2, B-flat2, and C3. The melody continues with quarter notes D3, E3, F3, and G3. The piece concludes with a half note G3. Dynamic markings include *piano* at measure 25 and *forte* at measure 25. There are also markings for a second ending (2) at measures 6, 11, and 19.

Edwin F. Kalmus
Publisher of music
New York, N.Y.

Violoncello

Adagio

15

piano

CAPRICCIO
Allegro

ff

piano *forte*

GAVOTTA
Allegro

Sonata II

Grave

piano

CORRENTE
Allegro

Violoncello

Musical score for Corrente, Violoncello part, measures 1-42. The score is written in bass clef with a key signature of one sharp (F#) and a 3/4 time signature. It consists of five staves of music. The first staff starts with a treble clef and a 3/4 time signature. The second staff is marked with measure numbers 12, 18, and 24. The third staff is marked with measure numbers 28 and 34. The fourth staff is marked with measure numbers 38 and 42. The piece concludes with a double bar line and repeat dots. Dynamics include *piano* and *forte*.

GIGA
Allegro

Musical score for Giga, Violoncello part, measures 1-28. The score is written in bass clef with a key signature of one sharp (F#) and a 12/8 time signature. It consists of five staves of music. The first staff starts with a treble clef and a 12/8 time signature. The second staff is marked with measure numbers 6 and 12. The third staff is marked with measure numbers 16 and 22. The fourth staff is marked with measure numbers 26 and 28. The piece concludes with a double bar line and repeat dots. Dynamics include *piano*.

GAVOTTA
Allegro

Musical score for Gavotta, Violoncello part, measures 1-28. The score is written in bass clef with a key signature of one sharp (F#) and a 4/4 time signature. It consists of two staves of music. The first staff starts with a treble clef and a 4/4 time signature. The second staff is marked with measure numbers 12 and 24. The piece concludes with a double bar line and repeat dots.

Sonata III

Adagio

Musical notation for the Adagio section, measures 1-9. The music is written in bass clef with a common time signature (C). It features a steady eighth-note accompaniment in the left hand and a more melodic line in the right hand.

ALLEMANDA

Allegro

Viol. II

Musical notation for the Allemanda section, measures 10-36. The music is written in bass clef with a common time signature (C). It features a steady eighth-note accompaniment in the left hand and a more melodic line in the right hand. The section is marked with a first ending bracket and includes a *piano* dynamic marking. The tempo is marked **Allegro**. Measure numbers 10, 14, 18, 23, 27, 30, and 36 are indicated on the left side of the staves.

Adagio

SARABANDA

Allegro

Viol. II

4

14

28

37

piano

Sonata IV

Largo

11

21

32

piano

forte

Adagio

ALLEMANDA

Allegro

5
10
15
20
25

SARABANDA

Largo

5
10

GIGA

Allegro

6
11
16
21

Sonata V

PRELUDIO

Largo

Musical notation for the Preludio section, measures 1-11. The music is written in bass clef with a key signature of one flat (B-flat) and a common time signature (C). The tempo is marked 'Largo'. The notation consists of a single melodic line with various rhythmic values including eighth and sixteenth notes, and rests.

ALLEMANDA

Presto

Musical notation for the Allemanda section, measures 1-17. The music is written in bass clef with a key signature of one flat (B-flat) and a common time signature (C). The tempo is marked 'Presto'. The notation features a mix of eighth and sixteenth notes, with some measures containing triplets. A 'piano' dynamic marking is present at measure 17.

CORRENTE

Allegro

Viol. II

Musical notation for the Corrente section, measures 1-47. The music is written in bass clef with a key signature of one flat (B-flat) and a 3/4 time signature. The tempo is marked 'Allegro'. The notation includes a variety of rhythmic patterns, such as eighth and sixteenth notes, and rests. A 'piano' dynamic marking is present at measure 47. There are also some markings like '2' and '4' above the staff in measures 2 and 21 respectively.

Violoncello

GAVOTTA

Presto

Musical score for Gavotta, Presto, Cello part. It consists of three staves of music in bass clef, 3/4 time, with a key signature of one flat. The first staff starts at measure 1. The second staff starts at measure 5. The third staff starts at measure 9 and includes first and second endings.

Sonata VI

PRELUDIO

Grave

Musical score for Sonata VI, Preludio, Grave, Cello part. It consists of three staves of music in bass clef, 3/4 time, with a key signature of two sharps. The first staff starts at measure 1. The second staff starts at measure 5. The third staff starts at measure 9.

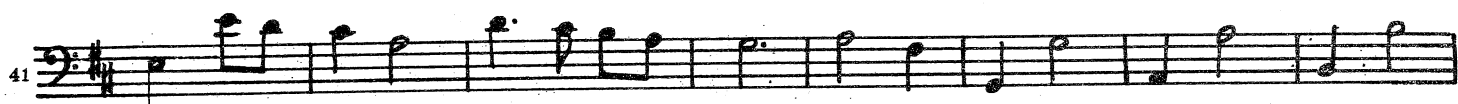
CORRENTE

Allegro

Viol. I

Musical score for Sonata VI, Corrente, Allegro, Violin I part. It consists of three staves of music in bass clef, 3/4 time, with a key signature of two sharps. The first staff starts at measure 1. The second staff starts at measure 9. The third staff starts at measure 19 and includes a piano dynamic marking. The fourth staff starts at measure 31.

Violoncello



Adagio



ALLEMANDA
Allegro

