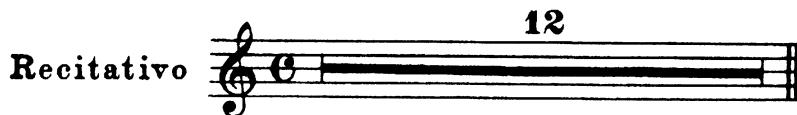


Motette: Exsultate, jubilate.

CORNO I

W. A. Mozart. Werk 165.

Allegro



Andante

65

38

4

VI. I

Musical staff for VI. I, Andante section, measures 65-78. The staff shows a melodic line with various rests and notes, including a fermata over a note in measure 75.

Allegro

1

1

12

Musical staff for Allegro section, measures 1-12. The staff begins with a forte (*f*) dynamic and contains a series of rhythmic patterns and rests.

Musical staff for VI. I, Allegro section, measures 1-12. The staff shows a melodic line with rests and notes, including a fermata over a note in measure 11.

Musical staff for Oboi, Allegro section, measures 5-18. The staff shows a melodic line with rests and notes, including a fermata over a note in measure 17.

Musical staff for Oboi and VI. I, Allegro section, measures 9-12. The staff shows a melodic line with rests and notes, including a fermata over a note in measure 11. Dynamics include *p cresc.* and *f*.

Musical staff for VI. I, Allegro section, measures 12-15. The staff shows a melodic line with rests and notes, including a fermata over a note in measure 14. Dynamics include *p*.

Musical staff for Sopran, Allegro section, measures 12-15. The staff shows a vocal line with rests and notes, including a fermata over a note in measure 14. Dynamics include *f*. The lyrics are: al - - le - lu - ja, al - le - lu - ja.

Musical staff for VI. I, Allegro section, measures 2-15. The staff shows a melodic line with rests and notes, including a fermata over a note in measure 14.

Musical staff for VI. I, Allegro section, measures 1-15. The staff shows a melodic line with rests and notes, including a fermata over a note in measure 14.

Musical staff for VI. I, Allegro section, measures 1-15. The staff shows a melodic line with rests and notes, including a fermata over a note in measure 14.