

Violino III

PAVANE & CHACONNE

HENRY PURCELL (1658-1695)

Pavane

First staff of the Pavane, measures 1-6. The key signature is two flats (B-flat and E-flat), and the time signature is 4/4. The music begins with a half note G3, followed by quarter notes A3, B3, and C4. A fermata is placed over the final G3. A 'V' (Vibrato) marking is above the first measure, and another 'V' is above the final G3.

Second staff of the Pavane, measures 7-12. Measures 7-11 contain a sequence of eighth and quarter notes: G3, A3, B3, C4, D4, E4, F4, G4, A4, B4, C5, B4, A4, G4. A fermata is over the final G4. Measure 12 contains a quarter rest followed by quarter notes G4, A4, B4, and C5. 'V' markings are above measures 10 and 12.

Third staff of the Pavane, measures 13-17. Measures 13-17 contain a sequence of eighth and quarter notes: G3, A3, B3, C4, D4, E4, F4, G4, A4, B4, C5, B4, A4, G4. A fermata is over the final G4. 'V' markings are above measures 13, 14, and 15.

Fourth staff of the Pavane, measures 18-21. Measures 18-21 contain a sequence of eighth and quarter notes: G3, A3, B3, C4, D4, E4, F4, G4, A4, B4, C5, B4, A4, G4. A fermata is over the final G4. 'V' markings are above measures 18 and 20.

Fifth staff of the Pavane, measures 22-25. Measures 22-25 contain a sequence of eighth and quarter notes: G3, A3, B3, C4, D4, E4, F4, G4, A4, B4, C5, B4, A4, G4. A fermata is over the final G4. 'V' markings are above measures 22 and 24.

Sixth staff of the Pavane, measures 26-29. Measures 26-29 contain a sequence of eighth and quarter notes: G3, A3, B3, C4, D4, E4, F4, G4, A4, B4, C5, B4, A4, G4. A fermata is over the final G4. 'V' markings are above measures 26, 27, and 28.

Seventh staff of the Pavane, measures 30-33. Measures 30-33 contain a sequence of eighth and quarter notes: G3, A3, B3, C4, D4, E4, F4, G4, A4, B4, C5, B4, A4, G4. A fermata is over the final G4.

Chaconne

First staff of the Chaconne, measures 1-6. The key signature is two flats (B-flat and E-flat), and the time signature is 3/4. The music begins with a half note G3, followed by quarter notes A3, B3, and C4. A fermata is over the final G3. A dynamic marking of *f* (forte) is at the beginning. A 'V' (Vibrato) marking is above the final G3.

Second staff of the Chaconne, measures 7-12. Measures 7-12 contain a sequence of quarter notes: G3, A3, B3, C4, D4, E4, F4, G4, A4, B4, C5, B4, A4, G4. 'V' markings are above measures 7 and 9.

Third staff of the Chaconne, measures 13-18. Measures 13-18 contain a sequence of quarter notes: G3, A3, B3, C4, D4, E4, F4, G4, A4, B4, C5, B4, A4, G4. A fermata is over the final G4.

Violino III

20

[pp]

28

[pp]

35

[sempre pp]

42

[mp]

50

cresc.

57

[ff]

64

70

[ff]

78

[ff]

Violino III

87



96



103



110



118



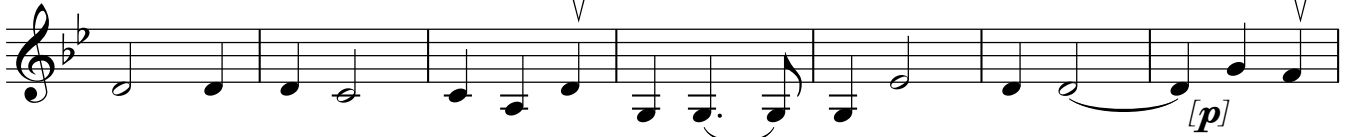
125



133



140



147

