

Viola (Violino III)

PAVANE & CHACONNE

HENRY PURCELL (1658-1695)

Pavane

First staff of the Pavane section, measures 1-6. The music is in 3/2 time with a key signature of two flats. It begins with a half rest followed by a half note G4, then a quarter note A4, a quarter note Bb4, and a quarter note C5. The melody continues with a half note D5, a quarter note E5, a quarter note F5, and a quarter note G5. The piece concludes with a half note G4 and a half note F4.

Second staff of the Pavane section, measures 7-12. Measures 7-8 contain a half note G4, a quarter note A4, a quarter note Bb4, and a quarter note C5. Measures 9-10 contain a half note D5, a quarter note E5, a quarter note F5, and a quarter note G5. Measure 11 contains a half note G4 and a half note F4. Measure 12 contains a half note G4 and a half note F4.

Third staff of the Pavane section, measures 13-17. Measures 13-14 contain a half note G4, a quarter note A4, a quarter note Bb4, and a quarter note C5. Measures 15-16 contain a half note D5, a quarter note E5, a quarter note F5, and a quarter note G5. Measure 17 contains a half note G4 and a half note F4.

Fourth staff of the Pavane section, measures 18-21. Measures 18-19 contain a half note G4, a quarter note A4, a quarter note Bb4, and a quarter note C5. Measures 20-21 contain a half note D5, a quarter note E5, a quarter note F5, and a quarter note G5.

Fifth staff of the Pavane section, measures 22-25. Measures 22-23 contain a half note G4, a quarter note A4, a quarter note Bb4, and a quarter note C5. Measures 24-25 contain a half note D5, a quarter note E5, a quarter note F5, and a quarter note G5.

Sixth staff of the Pavane section, measures 26-29. Measures 26-27 contain a half note G4, a quarter note A4, a quarter note Bb4, and a quarter note C5. Measures 28-29 contain a half note D5, a quarter note E5, a quarter note F5, and a quarter note G5.

Seventh staff of the Pavane section, measures 30-33. Measures 30-31 contain a half note G4, a quarter note A4, a quarter note Bb4, and a quarter note C5. Measures 32-33 contain a half note D5, a quarter note E5, a quarter note F5, and a quarter note G5.

Chaconne

First staff of the Chaconne section, measures 1-6. The music is in 3/4 time with a key signature of two flats. It begins with a half note G4, a quarter note A4, and a quarter note Bb4. The melody continues with a half note C5, a quarter note D5, a quarter note E5, and a quarter note F5. The piece concludes with a half note G4 and a half note F4.

Second staff of the Chaconne section, measures 7-12. Measures 7-8 contain a half note G4, a quarter note A4, and a quarter note Bb4. Measures 9-10 contain a half note C5, a quarter note D5, a quarter note E5, and a quarter note F5. Measures 11-12 contain a half note G4 and a half note F4.

Third staff of the Chaconne section, measures 13-18. Measures 13-14 contain a half note G4, a quarter note A4, and a quarter note Bb4. Measures 15-16 contain a half note C5, a quarter note D5, a quarter note E5, and a quarter note F5. Measures 17-18 contain a half note G4 and a half note F4.

Viola (Violino III)

20

[pp]

28

[pp]

35

[sempre pp]

42

[mp]

50

cresc.

57

[ff]

64

70

78

Viola (Violino III)

87



96



103



110



118



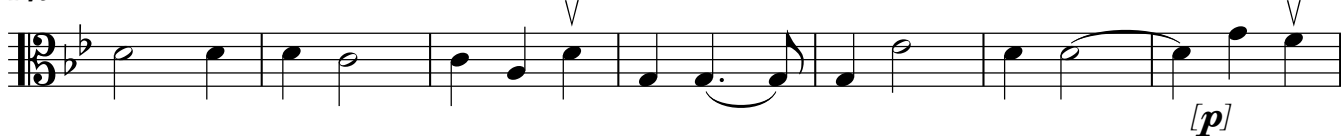
125



133



140



147

