

Fagott

Sonate für Oboe, Baritonoboe und Basso continuo B-Dur

Bearbeitung der Sonate op.1 Nr.3

Gottfried Finger

Adagio



7



13



Allegro

3



8



12



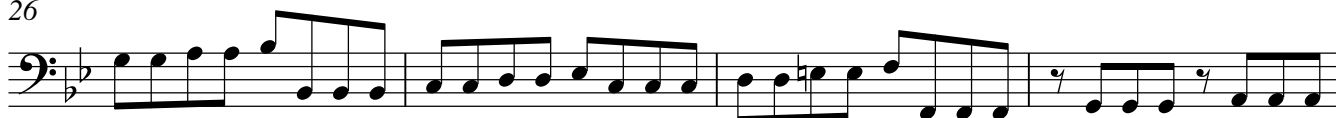
16



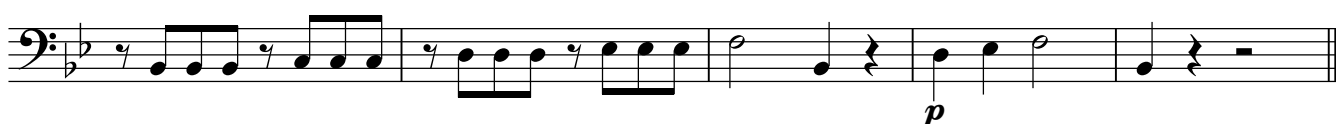
20



26



30



Adagio

Musical score for the Adagio section, measures 1 through 10. The music is written in bass clef with a key signature of two flats (B-flat and E-flat) and a 4/4 time signature. The first measure (measure 1) begins with a half note B-flat, followed by a half note E-flat. Measures 2 through 10 consist of eighth-note patterns, often beamed in groups of four or six, with various phrasing slurs and ties. Measure 10 ends with a whole note B-flat and a double bar line.

Allegro

Musical score for the Allegro section, measures 11 through 43. The music is written in bass clef with a key signature of two flats and a 6/4 time signature. The first measure (measure 11) starts with a half note B-flat, followed by a dotted half note E-flat. Measures 12 through 43 feature a variety of rhythmic patterns, including quarter notes, eighth notes, and dotted rhythms, often with rests. A dynamic marking of *p* (piano) appears in measure 19. Measure 43 ends with a whole note B-flat and a double bar line.

44 **Adagio**

Musical score for the Adagio section, measures 44 through 48. The music is written in bass clef with a key signature of two flats and a common time (C) signature. The first measure (measure 44) begins with a half note B-flat, followed by a half note E-flat. Measures 45 through 48 consist of quarter and half notes, with measure 48 ending with a whole note B-flat and a double bar line.