

MENUET 1 in D MINOR

(from: *Musikalische Klavierkunst und Vorratskammer*)

for Trumpet & Organ

Score (01':50")

Johann Heinrich Buttstett (1666 - 1727)

Arr. Michel Rondeau

Moderato ♩ = 120

Trumpet in C

Organ

The image displays a musical score for the first system, measures 6 through 12. It features two staves: a single staff for the Trumpet in C and a grand staff for the Organ (treble and bass clefs). The key signature is D minor (one flat) and the time signature is 3/4. The tempo is marked 'Moderato' with a quarter note equal to 120 beats per minute. The score includes various musical notations such as notes, rests, slurs, and ornaments. Measure 6 shows the beginning of a melodic phrase in the trumpet and organ. Measure 7 continues the phrase with a slur and an ornament. Measure 8 features a repeat sign. Measure 9 has a slur and an ornament. Measure 10 continues the melodic line. Measure 11 has a slur and an ornament. Measure 12 concludes the system with a repeat sign.

MENUET 1 in D MINOR - Buttstett - Score

18

C Tpt.

Org.

Detailed description: This system covers measures 18 to 24. The C Tpt. part (top staff) begins with a treble clef and a key signature of one flat (Bb). The melody starts on a half note G4, followed by quarter notes A4, Bb4, and C5. From measure 19, it features eighth-note patterns: G4-A4-Bb4, A4-G4-F4, and G4-A4-Bb4. The piece concludes with a whole note G4. The Organ part (bottom staves) consists of two staves. The right hand starts with a half note chord of G4-Bb4, followed by quarter notes G4, F4, and E4. The left hand provides a simple bass line with quarter notes G3, F3, and E3.

25

C Tpt.

Org.

Detailed description: This system covers measures 25 to 30. The C Tpt. part (top staff) is silent, indicated by a whole rest in each measure. The Organ part (bottom staves) continues from the previous system. The right hand starts with a half note chord of G4-Bb4, then moves to quarter notes G4, F4, and E4. In measure 26, it features a dotted quarter note G4 with a mordent, followed by eighth notes A4 and Bb4. The left hand continues with quarter notes G3, F3, and E3.

31

C Tpt.

Org.

Detailed description: This system covers measures 31 to 36. The C Tpt. part (top staff) begins with a treble clef and a key signature of one flat (Bb). The melody starts with a half note G4, followed by quarter notes A4, Bb4, and C5. From measure 32, it features eighth-note patterns: G4-A4-Bb4, A4-G4-F4, and G4-A4-Bb4. The piece concludes with a whole note G4. The Organ part (bottom staves) continues from the previous system. The right hand starts with a half note chord of G4-Bb4, then moves to quarter notes G4, F4, and E4. In measure 32, it features a dotted quarter note G4 with a mordent, followed by eighth notes A4 and Bb4. The left hand continues with quarter notes G3, F3, and E3.

MENUET 1 in D MINOR

(from: *Musikalische Klavierkunst und Vorratskammer*)
for Trumpet & Organ

Trumpet in B \flat

Johann Heinrich Buttstett (1666 - 1727)

Arr. Michel Rondeau

Moderato $\text{♩} = 120$

7

19

31

MENUET 1 in D MINOR

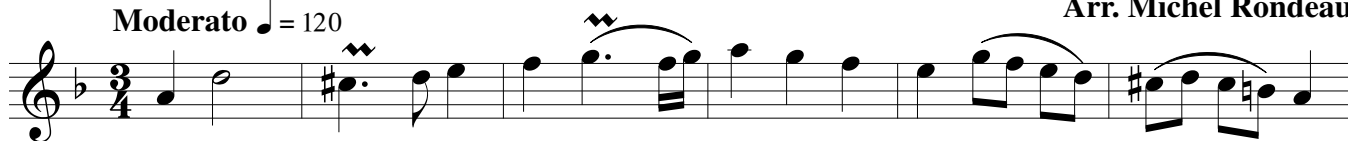
(from: *Musikalische Klavierkunst und Vorratskammer*)
for Trumpet & Organ

Trumpet in C

Johann Heinrich Buttstett (1666 - 1727)

Arr. Michel Rondeau

Moderato ♩ = 120



MENUET 1 in D MINOR

(from: *Musikalische Klavierkunst und Vorratskammer*)
for Trumpet & Organ

Trumpet in D

Johann Heinrich Buttstett (1666 - 1727)

Arr. Michel Rondeau

Moderato ♩ = 120



MENUET 1 in D MINOR

(from: *Musikalische Klavierkunst und Vorratskammer*)

for Trumpet & Organ

Organ

Johann Heinrich Buttstett (1666 - 1727)

Arr. Michel Rondeau

Trumpet in C

Moderato ♩ = 120

C Tpt.

Org.

C Tpt.

Org.

MENUET 1 in D MINOR - Buttstett - Organ

C Tpt.

Org.

18

18

Detailed description: This system covers measures 18 to 24. The C Tpt. part (top staff) begins at measure 18 with a melodic line of eighth and quarter notes. The Organ part (bottom two staves) provides harmonic support with chords and a bass line. Measure 25 is the end of this system.

C Tpt.

Org.

25

25

Detailed description: This system covers measures 25 to 30. The C Tpt. part (top staff) is mostly silent, with a few notes in measure 25. The Organ part (bottom two staves) continues with a more active melodic line in the right hand and a steady bass line. Measure 31 is the end of this system.

C Tpt.

Org.

31

31

Detailed description: This system covers measures 31 to 36. The C Tpt. part (top staff) has a melodic line with some grace notes. The Organ part (bottom two staves) continues with harmonic accompaniment. Measure 37 is the end of this system.