

Fantasia (8)

10. Juni 1680

Violoncello I e II

HENRY PURCELL

Vla. II

6

10

15

19

23

28

32

37

42

Slow (Langsam)

Brisk (Lebhaft)

Violoncello I e II

Fantasia (9)

11. Juni 1680

7

13

16

19

22

26

30

34

37

40

Vla. II

Vla. I

Violoncello I e II

Fantasia (10)

19. Juni 1680

Musical score for Fantasia (10) for Violoncello I and II. The score consists of eight staves of music in bass clef with a key signature of two flats (B-flat and E-flat). The first staff is the beginning of the piece. The second staff is marked with a measure rest '8'. The third staff is marked with a measure rest '15'. The fourth staff is marked with a measure rest '23' and includes a section for 'Vla. II' starting at measure 23. The fifth staff is marked with a measure rest '29'. The sixth staff is marked with a measure rest '33'. The seventh staff is marked with a measure rest '39'. The eighth staff is marked with a measure rest '45'. The piece concludes with a double bar line.

Fantasia (11)

23. Juni 1680

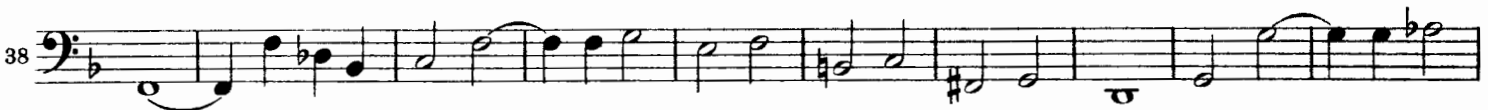
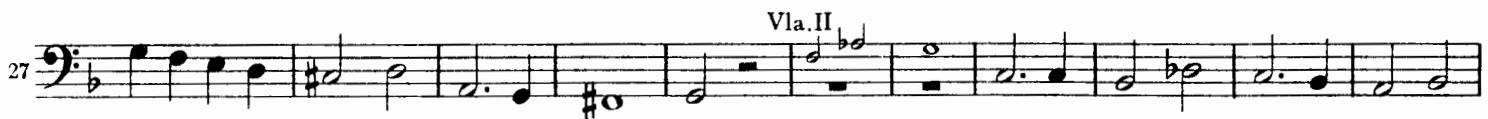
Musical score for Fantasia (11) for Violoncello I and II. The score consists of three staves of music in bass clef with a key signature of one flat (B-flat). The first staff is the beginning of the piece. The second staff is marked with a measure rest '9'. The third staff is marked with a measure rest '16' and includes a section for 'Vla. II' starting at measure 16. The piece concludes with a double bar line.

Violoncello I e II



Fantasia (12)

31. August 1680



Violoncello I e II

69

77

90

Fantasia (13)

Upon one note

8

16

21

25

32

36

41

Violoncello I e II

In Nomine (14)

3 Vla. II

10

18

25

In Nomine (15)

Vla. I

1

6

11

Violoncello I e II

16

22

29

Viol. I

35

42

48