

Originale

del

Nicolo Porpora).

M. di Cap: a Napoli.

(1685. # 1767.)

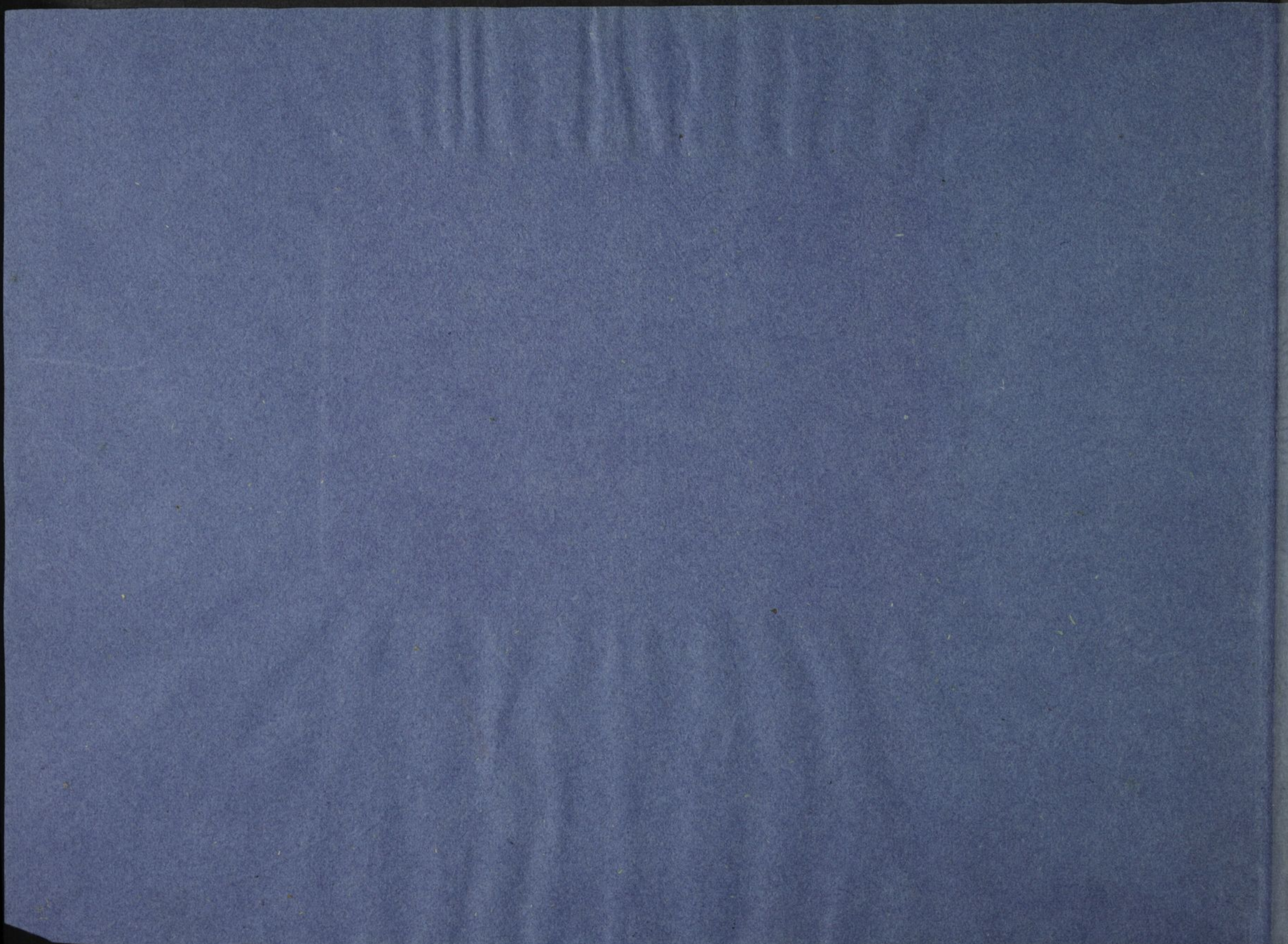
Salve Regina a Voce Sola. con Strom:

Comp: Septbre 1730.

1824.

Partitura.

AF.



16
Fog. 1. mo
~~Organo~~

Originale di Nicolo Porpora.

Adieu a voce sola
con Flautamenti

Per ~~Alabeta~~ Maria
Lara

Di Nicolo Porpora Maestro delle
Figlie e del coro del Pio Ospedale
delle Incurabili.
Milano
1730.

Adagio.

16549



Aus dem Autographen = Sammlung des Alphonse Guise.
1824.

Handwritten musical notation on a single staff, featuring complex rhythmic patterns and numerous accidentals.

Handwritten musical notation on a single staff, consisting of a series of eighth and sixteenth notes.

Handwritten musical notation on a single staff, consisting of a series of eighth and sixteenth notes.

Handwritten musical notation on a single staff, including dynamic markings *pia:* and *pia-*.

Handwritten musical notation on a single staff, consisting of a series of eighth and sixteenth notes.

Handwritten musical notation on a single staff, including dynamic markings *pia:* and *al. cat:*.

Handwritten musical notation on a single staff, including dynamic markings *pia* and *al*.

Handwritten musical notation on a single staff, consisting of a series of eighth and sixteenth notes.

pia: *pia:* 16549

6 2^a 6

Handwritten musical score on ten staves. The notation includes various rhythmic values, clefs, and dynamic markings. A tempo marking "Allegretto" is written on the fourth staff. The manuscript is written in brown ink on aged paper.

Handwritten musical score on aged paper, featuring multiple staves of music and lyrics. The notation includes various note values, rests, and dynamic markings. The lyrics are written in a cursive script, with some words appearing to be "pia", "Alto", "Ad or clama", and "e - xaltes". The score is organized into systems, with some staves containing multiple lines of music. There are also some markings that look like "6 6 6" and "5" at the bottom of the page.

pia

pia.

Alto

Ad or clama

e - xaltes

qu

6 6 6

6 6 6

6 6 6

6 6 6

*

al. Caf.

ue Regina Regina sal

ue Regina Ma-ter misericordie, Mater miseri-

Handwritten musical notation on two staves. The top staff features a series of sixteenth-note runs followed by quarter notes with slurs. The bottom staff continues with similar rhythmic patterns.

Handwritten musical notation on a single staff, showing a sequence of chords and melodic lines with various ornaments and slurs.

Handwritten musical notation on a single staff with the word "Cor" written above the first few notes and "die" above the next few.

Handwritten musical notation on a single staff, featuring a melodic line with slurs and a final measure with a sharp sign and a fermata.

Handwritten musical notation on a single staff, showing a melodic line with slurs and a final measure with a fermata.

Handwritten musical notation on a single staff, featuring a melodic line with slurs and a final measure with a fermata.

Handwritten musical notation on a single staff, showing a melodic line with slurs and a final measure with a fermata.

Handwritten musical notation on a single staff with the words "no luce" and "al - ce" written above the notes.

63
43
fer

Musical notation on a single staff with various notes, rests, and accidentals.

Musical notation on a single staff, including the word *pia* written below the notes.

Musical notation on a single staff, including the word *pia* written below the notes.

Musical notation on a single staff, including the word *pia* written below the notes.

Musical notation on a single staff, including the word *pia* written below the notes.

Musical notation on a single staff, including the words *Viva, dulcedo dulcedo et* written above the notes.

Musical notation on a single staff.

Musical notation on a single staff, starting with the instruction *Al. Cap.* written at the beginning.

Musical notation on a single staff.

Musical notation on a single staff, including the words *spes nostra et spes nostra* written above the notes.

Musical notation on a single staff, including the words *spes nostra et spes nostra* written above the notes.

Handwritten musical notation on two staves. The notation includes various rhythmic values such as eighth and sixteenth notes, and rests. There are several accidentals, including sharps and naturals, scattered throughout the piece. The handwriting is fluid and characteristic of 18th or 19th-century manuscript notation.

Handwritten musical notation on a single staff, featuring complex rhythmic patterns and many accidentals. The notation is dense and includes numerous sharps and naturals, suggesting a highly chromatic or modulating piece.

we salve dulcedo spes nostra sal ————— we sal

Handwritten musical notation on a single staff, corresponding to the lyrics above. The notes are mostly quarter and eighth notes, with some rests. There are several accidentals, including sharps and naturals.

Handwritten musical notation on a single staff, featuring complex rhythmic patterns and many accidentals. The notation is dense and includes numerous sharps and naturals, suggesting a highly chromatic or modulating piece.

for.
Viv.

Handwritten musical notation on a single staff, featuring a series of eighth notes. The notes are mostly quarter and eighth notes, with some rests. There are several accidentals, including sharps and naturals.

for.

Handwritten musical notation on a single staff, featuring a series of eighth notes. The notes are mostly quarter and eighth notes, with some rests. There are several accidentals, including sharps and naturals.

for.

6 #

Viv.

Bei Fi - lig He - re Fi - lig Feue - rqua -

Al. sf.

Musf.

9 9 9 9 9 9 9 7 6 6

Handwritten musical notation on a single staff, featuring various note values and rests.

Handwritten musical notation on a single staff, featuring various note values and rests.

Handwritten musical notation on a single staff, featuring various note values and rests.

Handwritten musical notation on a single staff, featuring various note values and rests.

Handwritten musical notation on a single staff, featuring various note values and rests.

Handwritten musical notation on a single staff, featuring various note values and rests.

Handwritten musical notation on a single staff, featuring various note values and rests.

Handwritten musical notation on a single staff, featuring various note values and rests.

Handwritten musical notation on a single staff, featuring various note values and rests.

Handwritten musical notation on a single staff, featuring various note values and rests.

ad se. clara

auf d. vollen Feij Feuer

6 * 6

Handwritten musical notation on a single staff, featuring various rhythmic values and accidentals.

Vant: *pia:*

Handwritten musical notation on a single staff, continuing the piece.

Handwritten musical notation on a single staff, including some slurs and dynamic markings.

ad *alma*
Handwritten musical notation on a single staff with lyrics.

Handwritten musical notation on a single staff, featuring complex rhythmic patterns.

Handwritten musical notation on a single staff, possibly a continuation of the previous system.

for.
Vant:

Handwritten musical notation on a single staff.

Handwritten musical notation on a single staff, including some slurs and dynamic markings.

mus *alma* - *mus*

Handwritten musical notation on a single staff, including some slurs and dynamic markings.

ab

BUCHSAMMLUNG
OSTERR.
NATIONALBIBL.

for.

Handwritten musical notation on two staves. The top staff features a melodic line with various note values and rests. The bottom staff contains a rhythmic accompaniment. Above the top staff, the tempo marking *ada:* is written. Above the bottom staff, the dynamic marking *pia.* is present.

Handwritten musical notation on two staves. The top staff continues the melodic line with some notes marked with *tu*. The bottom staff continues the accompaniment. Above the top staff, the dynamic marking *pia.* is written. Above the bottom staff, the tempo marking *Adagio:* is present.

Handwritten musical notation on two staves. The top staff features a melodic line with notes marked with *ad te suspi*. The bottom staff contains a rhythmic accompaniment. Above the top staff, the tempo marking *Adagio:* is present.

Handwritten musical notation on two staves. The top staff continues the melodic line. The bottom staff continues the accompaniment. Above the top staff, the tempo marking *Al. Cal.* is present.

Handwritten musical notation on two staves. The top staff continues the melodic line. The bottom staff continues the accompaniment. Above the top staff, the tempo marking *Al. Cal.* is present.

Handwritten musical notation on two staves. The top staff features a melodic line with notes marked with *-vamus ad te suspiramus gemem*. The bottom staff contains a rhythmic accompaniment. Above the top staff, the tempo marking *tes. er* is present.

Handwritten musical notation on two staves. The top staff contains a series of notes, some with accidentals (sharps and flats). The bottom staff contains a similar sequence of notes, with some beamed together.

Handwritten musical notation on two staves. The top staff is a vocal line with lyrics written below it. The bottom staff contains accompaniment notes. The lyrics are: "Senos in hac lacrima" and "vni cal".

Handwritten musical notation on two staves. The top staff is a vocal line with lyrics written below it. The bottom staff contains accompaniment notes. The lyrics are: "Senos in hac lacrima" and "vni cal".

Handwritten musical notation on two staves. The top staff contains a sequence of notes, some with accidentals. The bottom staff contains a similar sequence of notes, with some beamed together.

Handwritten musical notation on two staves. The top staff contains a sequence of notes, some with accidentals. The bottom staff contains a similar sequence of notes, with some beamed together.

Handwritten musical notation on two staves. The top staff contains a sequence of notes, some with accidentals. The bottom staff contains a similar sequence of notes, with some beamed together.

Handwritten musical notation on two staves. The top staff is a vocal line with lyrics written below it. The bottom staff contains accompaniment notes. The lyrics are: "ad".

Handwritten musical notation on two staves. The top staff contains a series of rhythmic patterns, possibly a vocal line, with various note values and rests. The bottom staff contains a more complex melodic line with many beamed notes and some accidentals.

al. Gaf.

Handwritten musical notation with lyrics. The lyrics are: *te ad te suspiramus suspiramus in hac la-crima.* The notation includes a vocal line with lyrics, a piano accompaniment with many beamed notes, and a bass line with some accidentals. There are some markings like *mf* and *pia.* above the notes.

Handwritten musical notation with lyrics. The lyrics are: *rum uol*. The notation includes a vocal line with lyrics, a piano accompaniment with many beamed notes, and a bass line with some accidentals. There are some markings like *mf* and *pia.* above the notes.

for. pia.

for. pia:

for. pia:

for. pia:

All.:

Viv.:

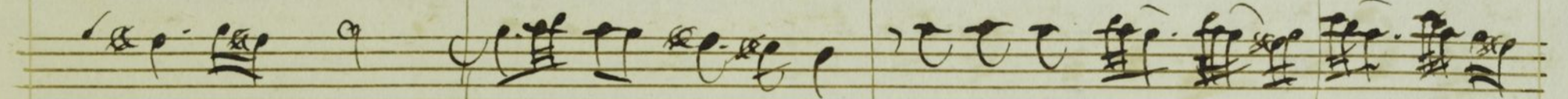
Allegro:

Allegro.

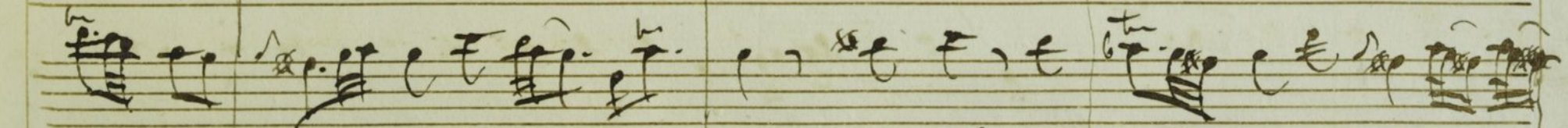
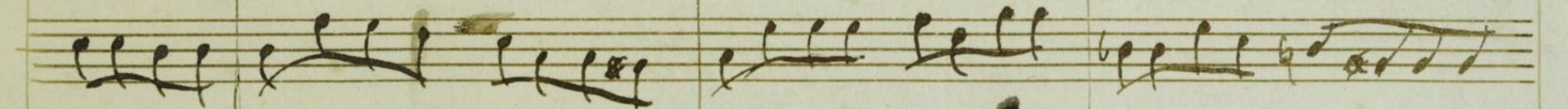
Handwritten musical notation on two staves, featuring complex rhythmic patterns and multiple beams.

Handwritten musical notation with lyrics "aduoca" and "ca adu" written below the notes. The notation includes various rhythmic values and beams.

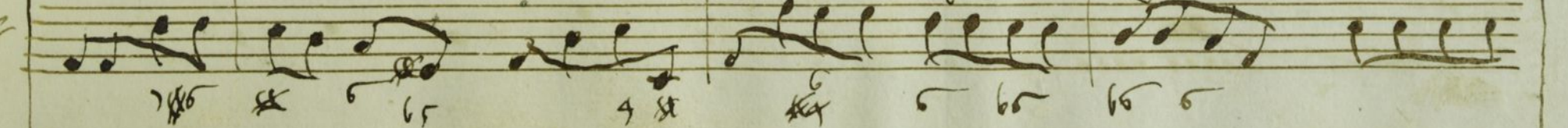
Handwritten musical notation with lyrics "caea no" and "dia: illas" written below the notes. The notation includes various rhythmic values and beams.



celos ad nos conuen



te conuen te ad nos ad nos conuen



Handwritten musical score for a multi-voice setting of the Benedictus. The score consists of ten staves. The lyrics "Et Je - sum benedictum fru - ctum ven - eris" are written below the bottom staff. Performance markings include "pia:", "legue", and "for.".

Handwritten musical notation on two staves. The top staff begins with a treble clef and a key signature of one sharp (F#). The bottom staff begins with a bass clef and a key signature of one flat (Bb). The music consists of eighth and sixteenth notes.

Handwritten musical notation with lyrics. The lyrics are: "tū nobis post hoc exilium nobis post hoc exilium osten". The notation includes a treble clef, a key signature of one sharp, and various note values. There are some annotations above the notes, including "Stu" and "6m".

Handwritten musical notation on two staves. The top staff continues the melody from the previous system, with lyrics "tū nobis post hoc exilium nobis post hoc exilium osten". The bottom staff continues the bass line. There are some annotations below the notes, including "177", "6", "5", and "7".

Handwritten musical notation on a single staff. This staff contains a complex, dense passage of music with many beamed notes and accidentals, possibly representing a figured bass or a highly ornamented part.

Handwritten musical notation on a single staff. This staff contains a series of notes with various accidentals and some numerical figures below them, possibly representing a figured bass or a specific rhythmic pattern. The figures include "6", "4", "2", "9", and "6".

7.

al

Handwritten musical notation for two staves. The top staff contains a series of rhythmic patterns, primarily eighth and sixteenth notes, with some rests. The bottom staff continues these patterns, showing a consistent rhythmic structure across both staves.

Handwritten musical notation for a single staff, featuring notes and rests. The notes are mostly quarter and eighth notes, with some rests interspersed.

devenit o' pia o' dulcis Virgo Virgo Maria

Handwritten musical notation for two staves. The top staff contains the lyrics: *devenit o' pia o' dulcis Virgo Virgo Maria*. The bottom staff contains musical notation with figured bass symbols (e.g., 46, 67, 65, 67, 9) written below the notes.

Handwritten musical notation for two staves, featuring rhythmic patterns of eighth and sixteenth notes. The notation is dense and consistent across both staves.

Handwritten musical notation for a single staff, starting with a treble clef. The notation consists of a series of notes, possibly representing a specific melodic line or a rhythmic exercise.

Handwritten musical notation for a single staff, starting with a bass clef. The notation includes the word *Sal* written above the first few notes. The staff contains a series of notes with figured bass symbols (4, 5, 7, 6) written below them.

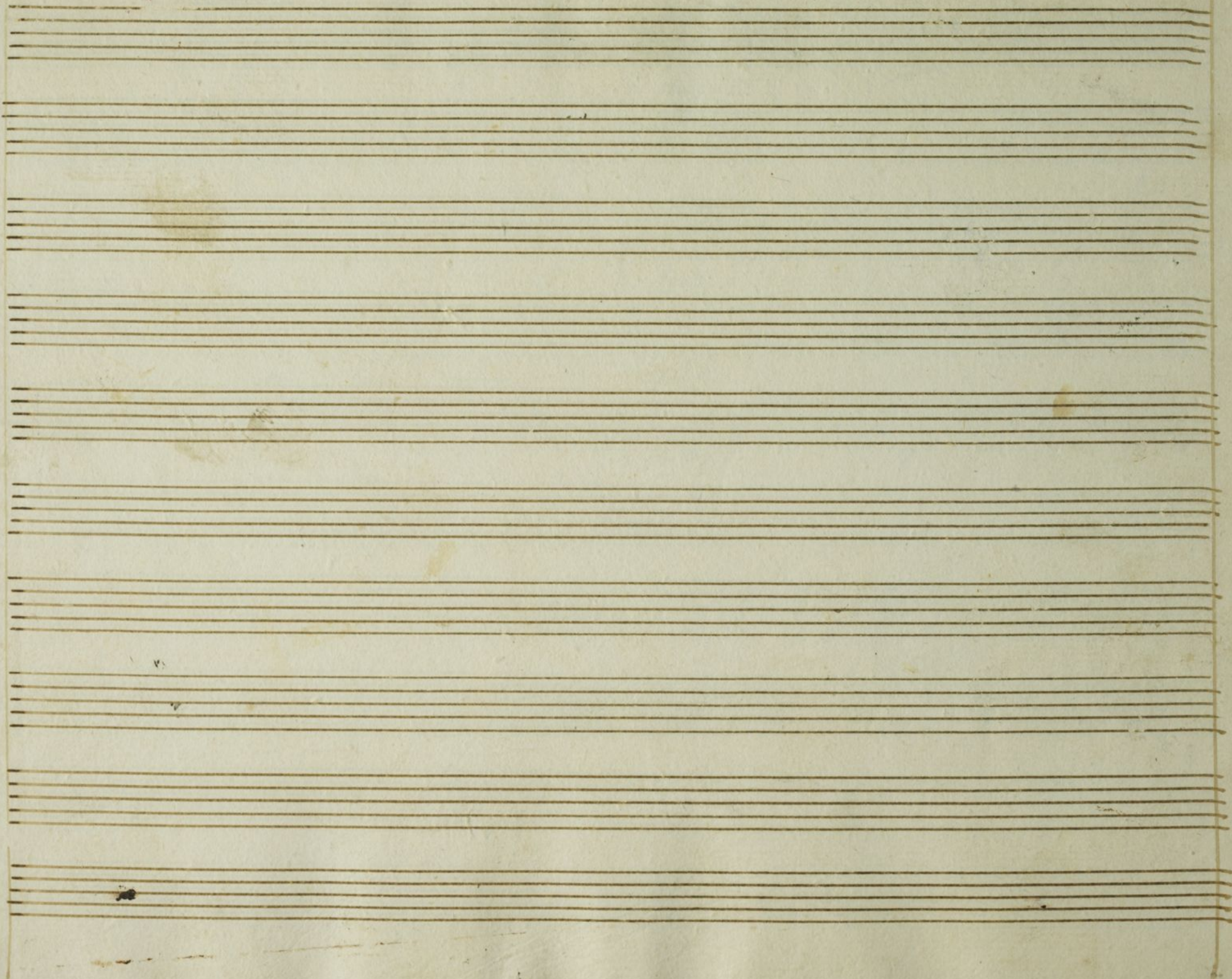
Handwritten musical score on five staves. The notation includes various rhythmic values, accidentals, and dynamic markings. The first staff begins with a treble clef and a key signature of one sharp (F#). The second staff contains dense sixteenth-note passages. The third staff has a treble clef and a key signature of one sharp. The fourth staff includes the markings "ad. sal." and "ad.". The fifth staff continues the melodic line with a sharp sign at the end.

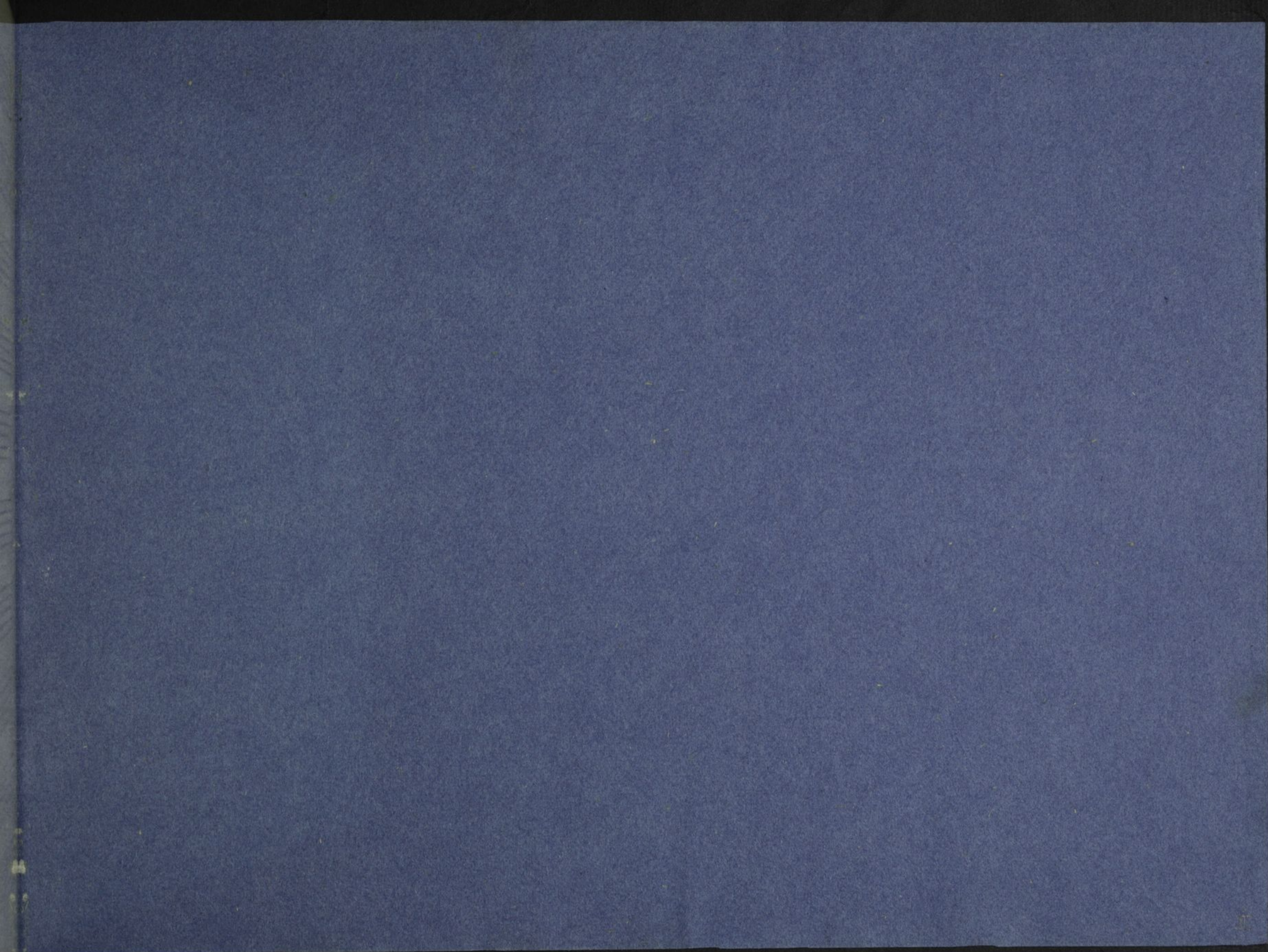
Handwritten musical score on five staves. The notation is sparse, consisting of a few notes and rests. The second staff has a treble clef and a key signature of one sharp. The fourth staff contains the markings "ad. sal." and "ad.". The fifth staff has a treble clef and a key signature of one sharp.

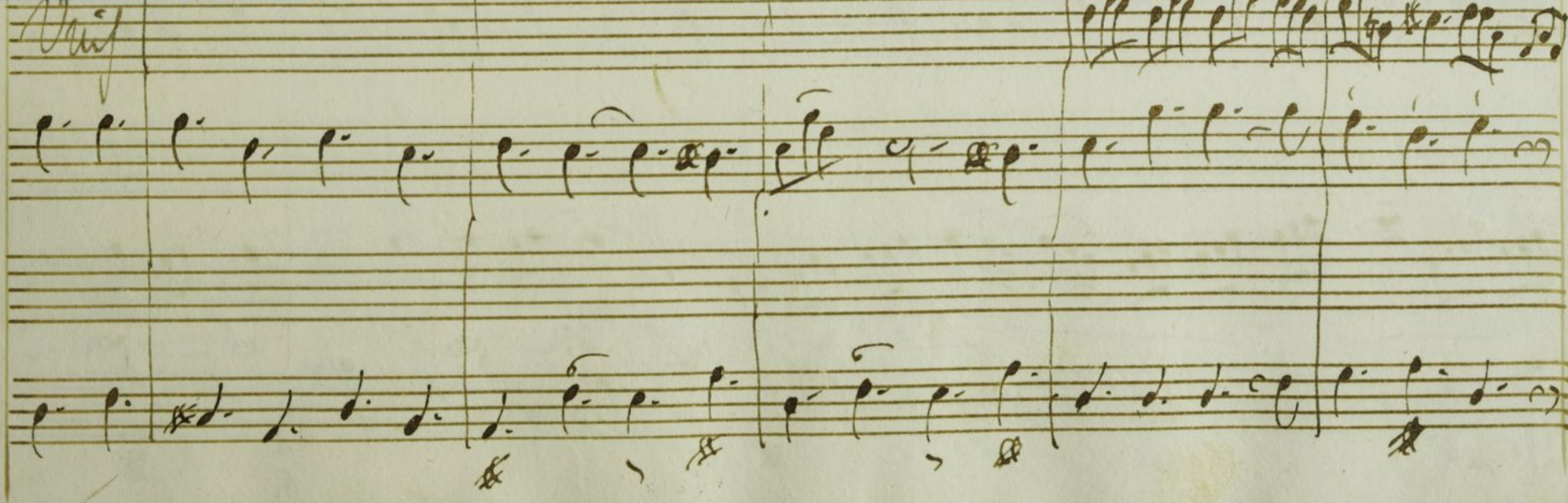
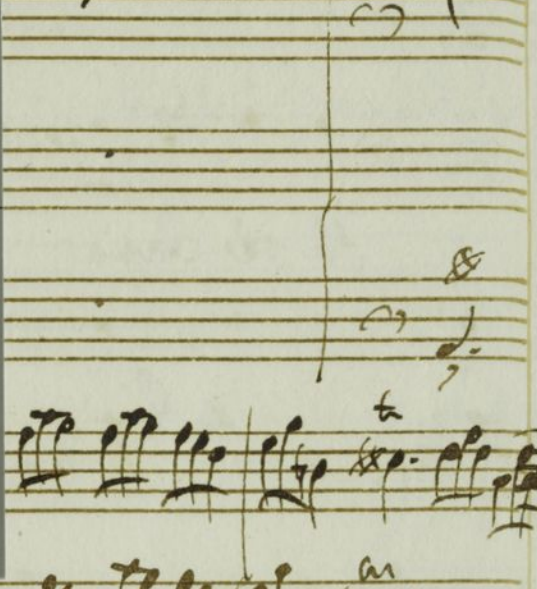
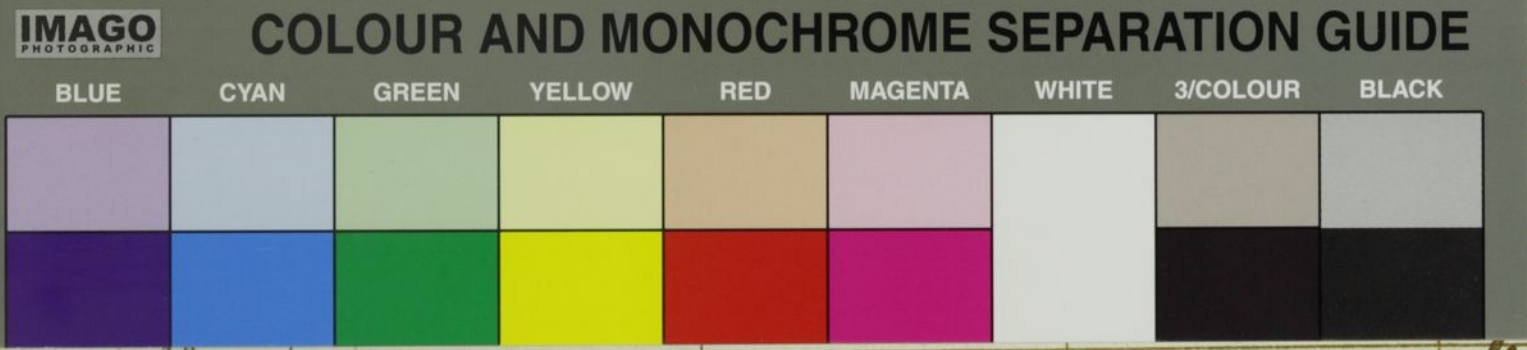
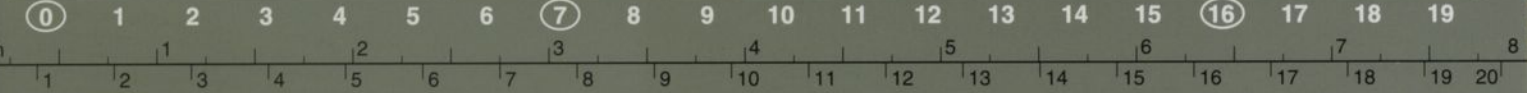
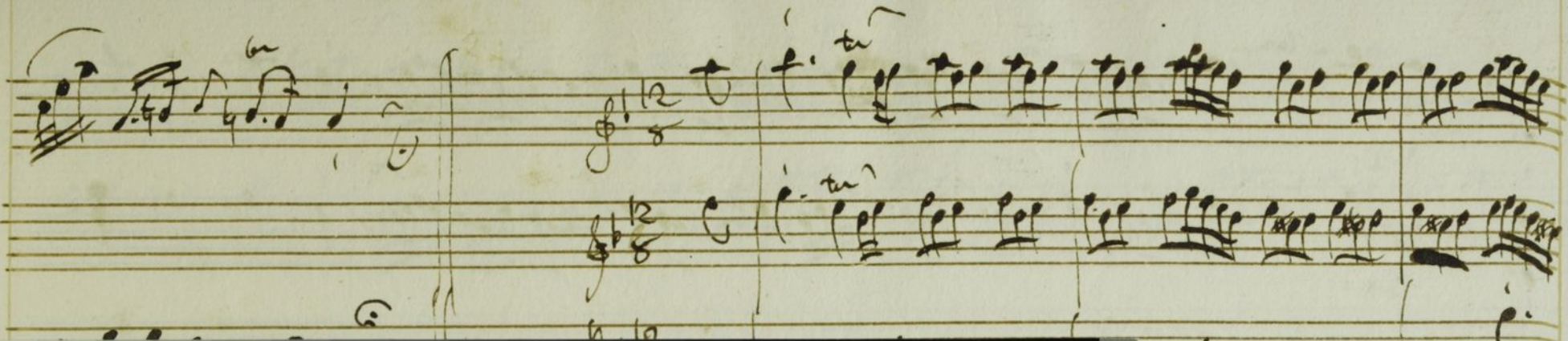


Handwritten signature or name, possibly "L. M. J.", written in a cursive style.









Handwritten musical score on aged paper, featuring multiple staves with various musical notations, including notes, rests, and dynamic markings such as *tr* and *pia*. The notation is dense and includes complex rhythmic patterns and articulation marks.

Colour and Monochrome Separation Guide with a ruler and color calibration chart. The ruler shows inches (0 to 19) and centimeters (1 to 20). The color calibration chart includes a grayscale strip and a color strip with the following labels: BLUE, CYAN, GREEN, YELLOW, RED, MAGENTA, WHITE, 3/COLOUR, and BLACK.

0	1	2	3	4	5	6	7	8	9	10	11	12	13	14	15	16	17	18	19
1	2	3	4	5	6	7	8	9	10	11	12	13	14	15	16	17	18	19	20
1	2	3	4	5	6	7	8	9	10	11	12	13	14	15	16	17	18	19	20
IMAGO PHOTOGRAPHIC																			
COLOUR AND MONOCHROME SEPARATION GUIDE																			
BLUE	CYAN	GREEN	YELLOW	RED	MAGENTA	WHITE	3/COLOUR	BLACK											
Blue	Cyan	Green	Yellow	Red	Magenta	White	3/Colour	Black											
Blue	Cyan	Green	Yellow	Red	Magenta	White	3/Colour	Black											