

NACHSPIEL in G MAJOR

(from: J.C. Kühnau - Choral - Vorspiele für die Orgel, Berlin, ca.1790)

for Flute, Oboe, Clarinet and Bassoon

Score (01':40")

Christian Friedrich Schale (1713 - 1800)

Arr. Michel Rondeau

Allegro ♩ = 100

mf *mf* *mf* *mf* *simile*

Flute

Oboe

Clarinet in B \flat

Bassoon

8

Fl.

Ob.

B \flat Cl.

Bsn.

15

Fl.

Ob.

B \flat Cl.

Bsn.

22

Fl. *p* *cresc.*

Ob. *p* *cresc.*

B♭ Cl. *p* *cresc.*

Bsn. *p* *cresc.*

Detailed description: This system contains measures 22 through 27. It features four staves: Flute (Fl.), Oboe (Ob.), B♭ Clarinet (B♭ Cl.), and Bassoon (Bsn.). The key signature is G major (one sharp). The music begins with a piano (*p*) dynamic. The Flute and Oboe parts feature intricate sixteenth-note passages. The Clarinet and Bassoon parts provide a harmonic foundation with sustained notes and some rhythmic movement. A crescendo (*cresc.*) is indicated across the system, leading to a more intense texture by measure 27.

28

Fl. *f* *p*

Ob. *f* *p*

B♭ Cl. *f* *p*

Bsn. *f* *p*

Detailed description: This system contains measures 28 through 34. The dynamics shift to forte (*f*) in measure 28, with a return to piano (*p*) by measure 34. The Flute and Oboe parts continue with complex rhythmic patterns. The Clarinet and Bassoon parts maintain a steady accompaniment. The overall texture is more pronounced due to the increase in volume.

35

Fl. *f*

Ob. *f*

B♭ Cl. *f*

Bsn. *f*

Detailed description: This system contains measures 35 through 40. The music remains at a forte (*f*) dynamic. The Flute part has a brief rest in measure 35 before rejoining with a melodic line. The Oboe, Clarinet, and Bassoon parts continue their respective parts, contributing to a rich, full orchestral sound.

42

Fl. *p* *cresc.*

Ob. *p* *cresc.*

B \flat Cl. *p* *cresc.*

Bsn. *p* *cresc.*

Detailed description: This system covers measures 42 to 46. The Flute part begins with a melodic line in measure 42, followed by a rest in 43, and then a series of sixteenth-note patterns in 44, 45, and 46. The Oboe, B-flat Clarinet, and Bassoon parts provide harmonic support with similar rhythmic patterns. Dynamics range from piano (*p*) to crescendo (*cresc.*).

47

Fl. *f* *p* *f*

Ob. *f* *p* *f*

B \flat Cl. *f* *p* *f*

Bsn. *f* *p* *f*

Detailed description: This system covers measures 47 to 52. The Flute part features a dynamic contrast, starting with a forte (*f*) melodic line in 47, a piano (*p*) section in 48-49, and returning to forte (*f*) in 50-52. The Oboe, B-flat Clarinet, and Bassoon parts mirror this dynamic structure with their respective parts.

53

Fl.

Ob.

B \flat Cl.

Bsn.

Detailed description: This system covers measures 53 to 58. The Flute part continues with a melodic line, featuring a rest in measure 53 and then sustained melodic phrases. The Oboe, B-flat Clarinet, and Bassoon parts provide harmonic support with sustained notes and rhythmic patterns.

60

Fl. *p* *cresc.* *f*

Ob. *p* *cresc.* *f*

B \flat Cl. *p* *cresc.* *f*

Bsn. *p* *cresc.* *f*

67

Fl. *p* *f* *p*

Ob. *p* *f* *p*

B \flat Cl. *p* *f* *p*

Bsn. *p* *f* *p*

74

Fl. *f* *p* *cresc.* *rit.* *f*

Ob. *f* *p* *cresc.* *f*

B \flat Cl. *f* *p* *cresc.* *f*

Bsn. *f* *p* *cresc.* *f*

NACHSPIEL in G MAJOR

(from: J.C. Kühnau - Choral - Vorspiele für die Orgel, Berlin, ca.1790)

for Flute, Oboe, Clarinet and Bassoon

Flute

Christian Friedrich Schale (1713 - 1800)

Arr. Michel Rondeau

Allegro ♩ = 100

mf

simile

9 *p* *f*

18 *p* *cresc.*

27 *f*

36 *f* *p*

45 *cresc.* *f* *p* *f*

53 *p*

63 *cresc.* *f* *p* *f*

73 *p* *f* *tr* *p* *cresc.* *rit.* *f*

NACHSPIEL in G MAJOR

(from: J.C. Kühnau - Choral - Vorspiele für die Orgel, Berlin, ca.1790)
for Flute, Oboe, Clarinet and Bassoon

Oboe

Christian Friedrich Schale (1713 - 1800)

Arr. Michel Rondeau

Allegro ♩ = 100

The musical score for Oboe consists of nine staves of music in G major (one sharp) and 2/4 time. The tempo is marked Allegro with a quarter note equal to 100 beats per minute. The score begins with a *mf* dynamic. The first staff (measures 1-9) includes a *mf* dynamic. The second staff (measures 10-19) features dynamics of *p* and *f*. The third staff (measures 20-27) includes *p* and *cresc.* dynamics. The fourth staff (measures 28-36) features *f*, *p*, and *f* dynamics. The fifth staff (measures 37-45) includes *p* and *cresc.* dynamics. The sixth staff (measures 46-54) features *f*, *p*, and *f* dynamics. The seventh staff (measures 55-65) includes *p* and *cresc.* dynamics. The eighth staff (measures 66-74) features *f*, *p*, *f*, *p*, and *f* dynamics. The ninth staff (measures 75-84) includes *p*, *cresc.*, *rit.*, and *f* dynamics.

NACHSPIEL in G MAJOR

(from: J.C. Kühnau - Choral - Vorspiele für die Orgel, Berlin, ca.1790)

for Flute, Oboe, Clarinet and Bassoon

Clarinet in B \flat

Christian Friedrich Schale (1713 - 1800)

Arr. Michel Rondeau

Allegro $\text{♩} = 100$

10

21

31

41

51

62

70

77

mf

p

f

cresc.

f

p

f

p

f

p

f

cresc.

f

p

f

f

p

f

cresc.

rit.

f

NACHSPIEL in G MAJOR

(from: J.C. Kühnau - Choral - Vorspiele für die Orgel, Berlin, ca.1790)

for Flute, Oboe, Clarinet and Bassoon

Bassoon

Christian Friedrich Schale (1713 - 1800)

Arr. Michel Rondeau

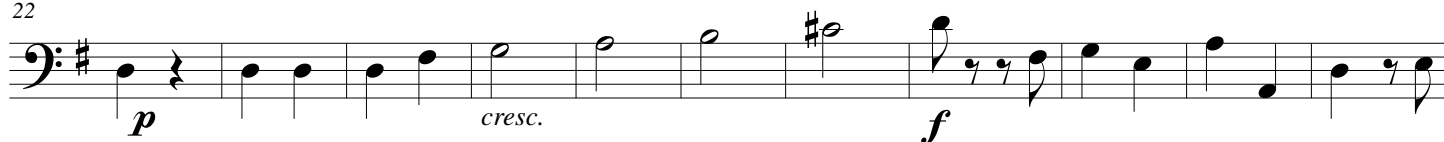
Allegro ♩ = 100



10



22



33



43



55



67



76

