

Deuxieme Suite

Dessus I

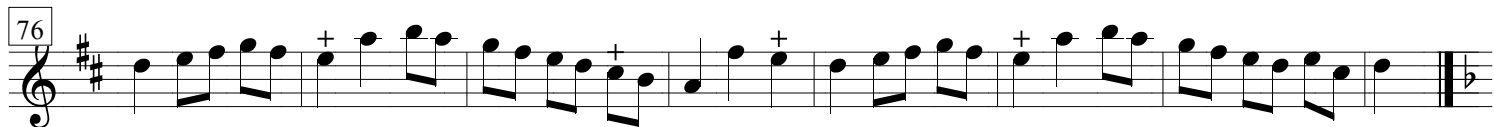
Jacques Aubert de La Vieux
(1689 - 1753)

Musical score for the first section of the Deuxieme Suite, Dessus I. The score is written in treble clef with a key signature of two sharps (F# and C#). The time signature is common time (C). The piece begins with a treble clef and a key signature of two sharps. The first line of music ends with a repeat sign and a first ending bracket labeled '1.'. The second line begins with a second ending bracket labeled '2.' and ends with a repeat sign. The third line continues the melody. The fourth line ends with a repeat sign. The fifth line continues the melody. The sixth line ends with a repeat sign. The seventh line continues the melody and ends with a final double bar line and a 3/4 time signature.

Rondo 1

Musical score for Rondo 1, Dessus I. The score is written in treble clef with a key signature of two sharps (F# and C#). The time signature is 3/4. The piece begins with a treble clef, a key signature of two sharps, and a 3/4 time signature. The first line of music ends with a repeat sign and a first ending bracket labeled 'Fine'. The second line continues the melody. The third line continues the melody. The fourth line continues the melody. The fifth line continues the melody and ends with a final double bar line.

76



2° Rondo

84



93



101



110



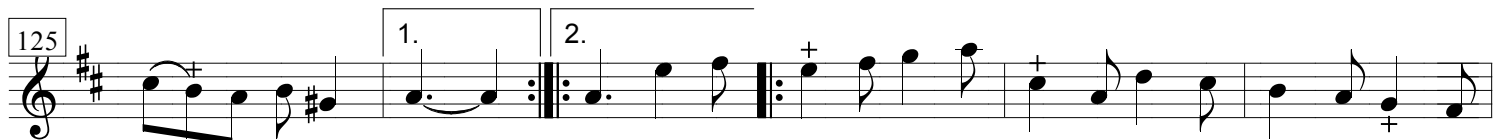
D.S. al Fine

118

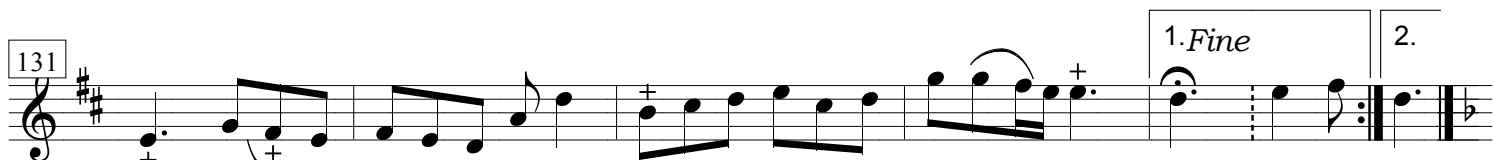


1° Air

125



131



2° Air

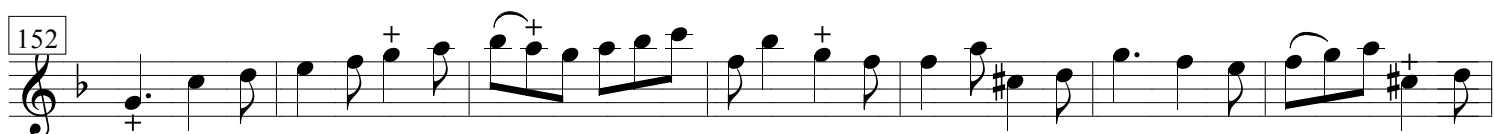
138



145



152



159



D.S. al Fine

Sarabande

166

174

181

1° Rigaudon

187

197

2° Rigaudon

206

215

223

1° Fanfare

231

237

244

2° Fanfare

250

255

260

265

270

D.S. al Fine

1° Menuet

276

280

285

289

2° Menuet

294

300

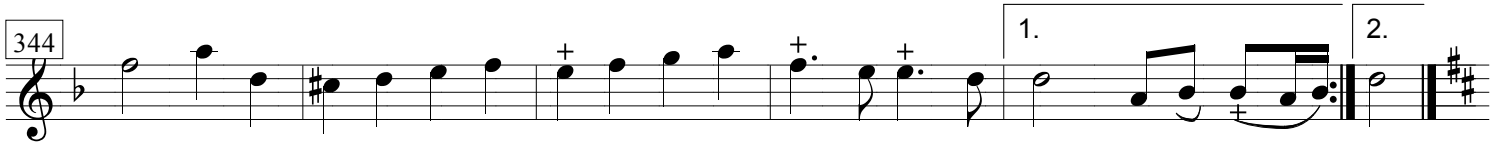
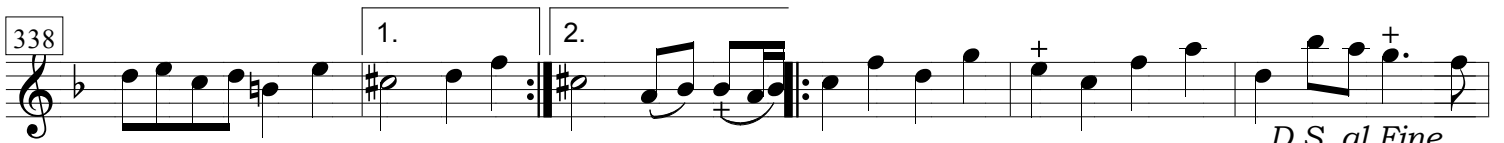
306

D.S. al Fine

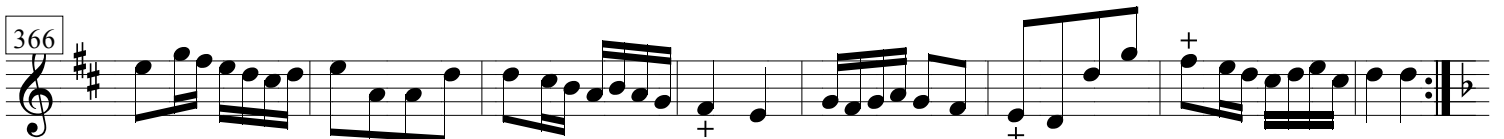
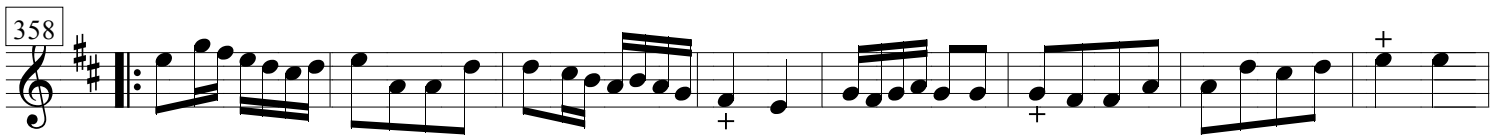
1° Gavotte



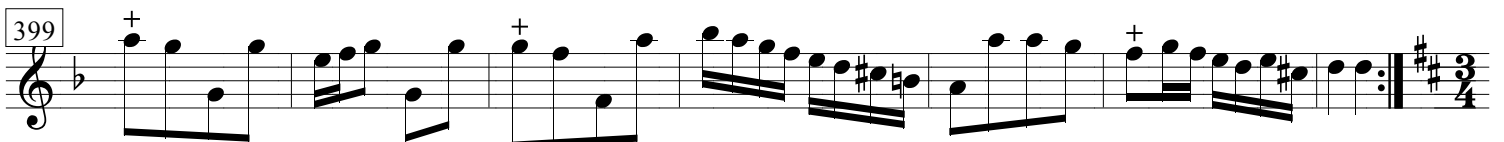
2° Gavotte



1° Tambourin



2° Tambourin



Chaconne

406

414

422

430

438 *trio*

446

454

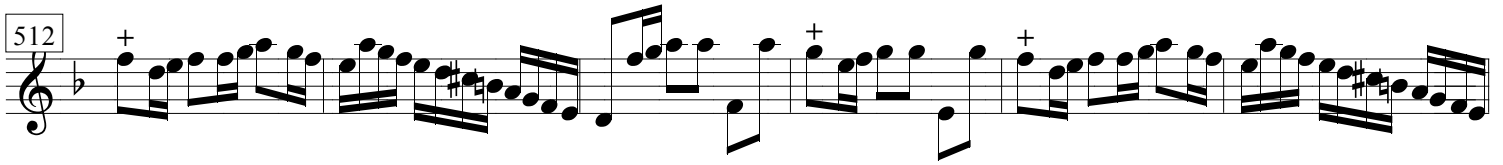
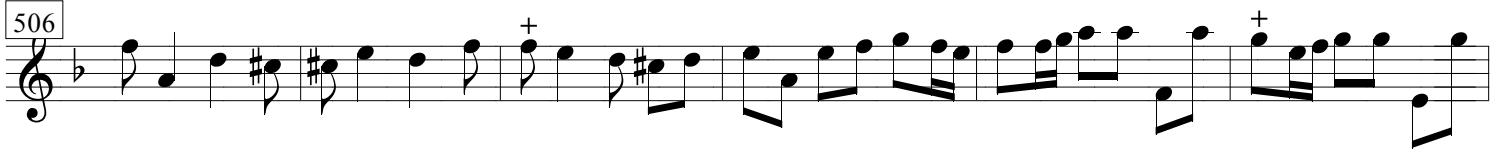
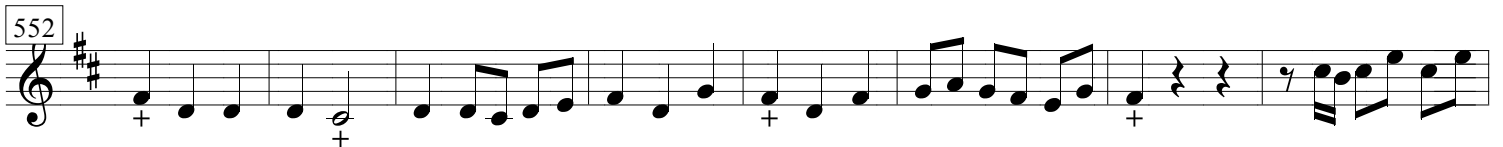
461

467

473

478

482

(menor)*(Maior)*

575

580

585

592

599

605

610

615

619

623

628

633