

Andante

p con affetto
cantabile
cresc molto

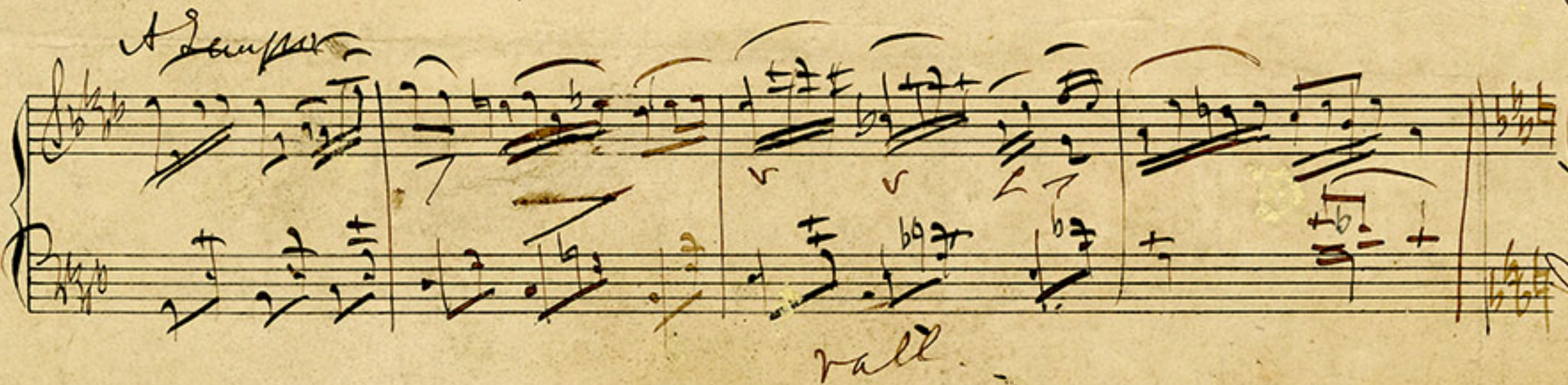
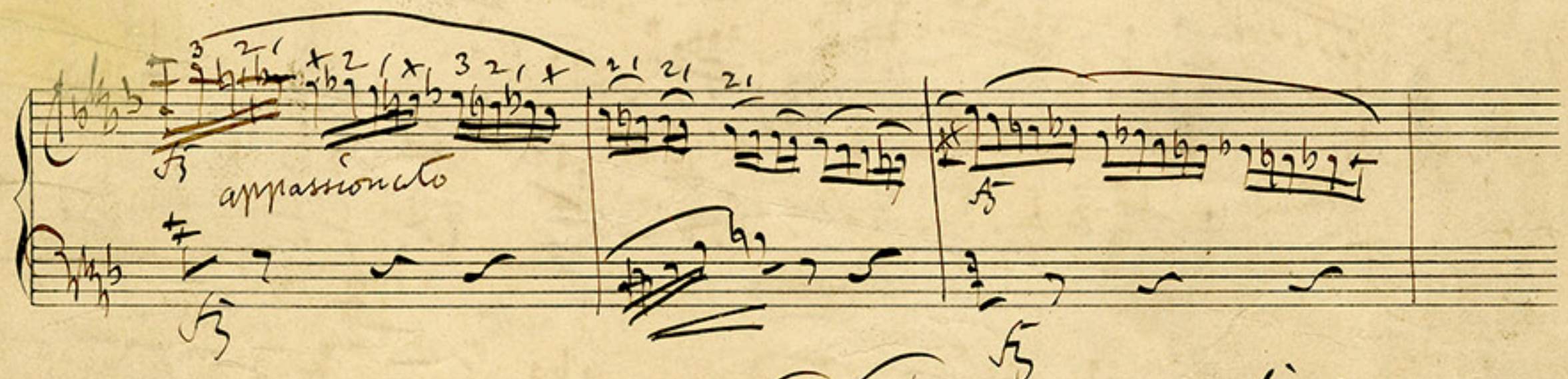
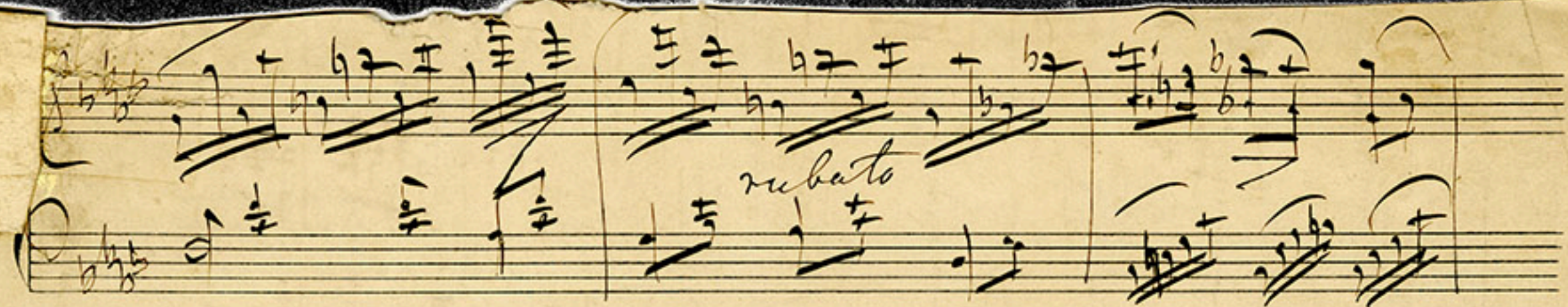
dim
rit

Allegro
dim
rall molto
A Tempo

cresc. molto
sempre dim & rall

B Un poco più vivo
mf
rall
A Tempo

rallentando
A Tempo
con bris



Re-entrance from
A to B.

con grazia



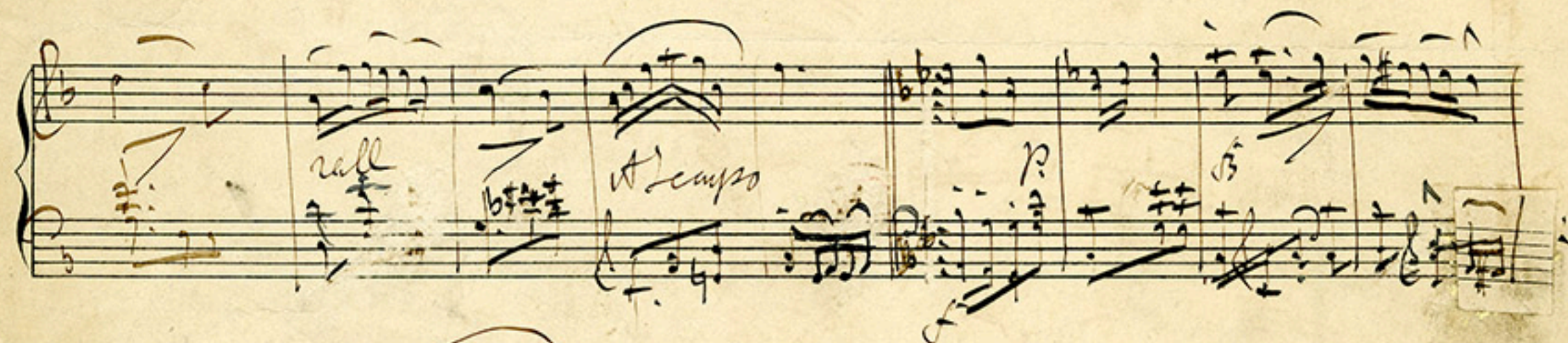
rall. *B* *con fuoco*



cresc.



rall. *Al tempo* *p*



p *schengando*



cresc. *con brio*

