

Violin: **TANGO IN WAR/WAR TIME**

Well marked. Very macabre. ($\text{♩} = 116-120$)

Marshall Pine, op. 100
2001-02

Handwritten musical notation for measures 1-4. The piece is in 3/4 time. Measure 1 starts with a fortissimo (**ff**) dynamic and a triplet of eighth notes. The melody is written in a single staff with a treble clef. The key signature has one flat (B-flat).

Handwritten musical notation for measures 5-10. Measure 5 is marked with a Roman numeral **IV**. The notation includes slurs and accents over the notes. The dynamics are not explicitly marked in this section.

Handwritten musical notation for measures 11-16. Measure 11 has a piano (**p**) dynamic. Measure 14 has a fortissimo (**f**) dynamic. There are boxed numbers 1 and 2 above the notes in measures 14 and 15 respectively.

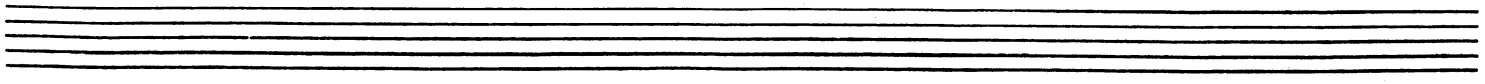
Handwritten musical notation for measures 17-19. Measure 17 has a **cresc.** (crescendo) marking. The notation features a series of eighth notes with a slur.

Handwritten musical notation for measures 20-24. Measure 20 has a fortissimo (**ff**) dynamic. The notation includes triplets and slurs. There are boxed numbers 1 and 2 above the notes in measures 22 and 23 respectively.

Handwritten musical notation for measures 25-28. Measure 25 has a fortissimo (**f**) dynamic. The notation includes **pizz.** (pizzicato) and **arco** markings. There are boxed numbers 1 and 2 above the notes in measures 26 and 27 respectively.

Handwritten musical notation for measures 29-36. Measure 29 has a fortissimo (**f**) dynamic. The notation includes slurs and accents. There are boxed numbers 2 and 3 above the notes in measures 29 and 30 respectively.

Handwritten musical notation for measures 37-40. Measure 37 has a fortissimo (**f**) dynamic. The notation includes slurs and accents. There are boxed numbers 2 and 3 above the notes in measures 37 and 38 respectively.



VIOLIN.

②

41 *pizz.* *mf* **4** *arco* *ff*

53 *p cresc.* *ff*

58 *f*

65 *ff* **5**

68 *ff* *pizz.*

73 *arco* *p* *pp*

78 *(non cresc.)* *cresc.* *ff*

82

86 **6** *p* **7** *mf* **8**

111 **8** *f* *p* **9** *pizz.*

VIOLIN.

3

124 **3** *arco* **#** **b** **b** **1** **3** **3**

133 **8** **10** **3** *Fl.* **p**

149

155 **11**

161 *pont.* **1** *nat.*

167 *pont. tram.* **pp** *nat.* **pp cresc. molto**

174 **ff**

179 **ff**

184 **fff** **13**

191 *dim.* **3**

VIOLIN.

④

197

p *mf* *f*

203

ff *mf* *cresc.* *ff*

206

211

p *ff*

215 II

non cresc. *cresc.*

219

ff

223

ff

228

ff

232

p *ff* *cresc.*

237

ff (239)