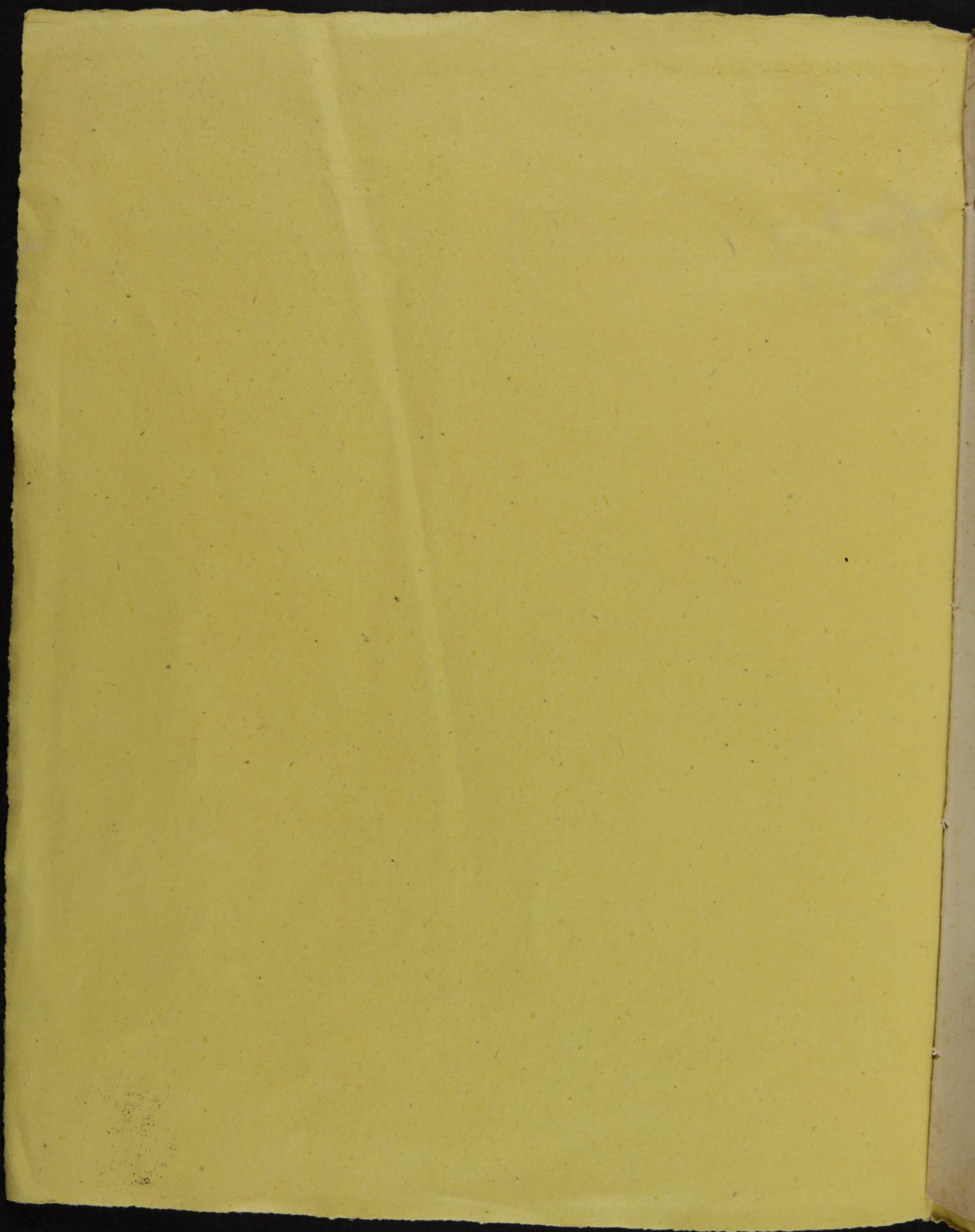


F. 639



Carl' Ambrogio Lonati

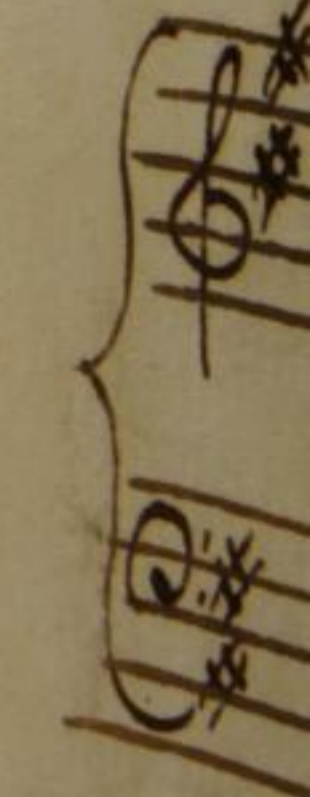
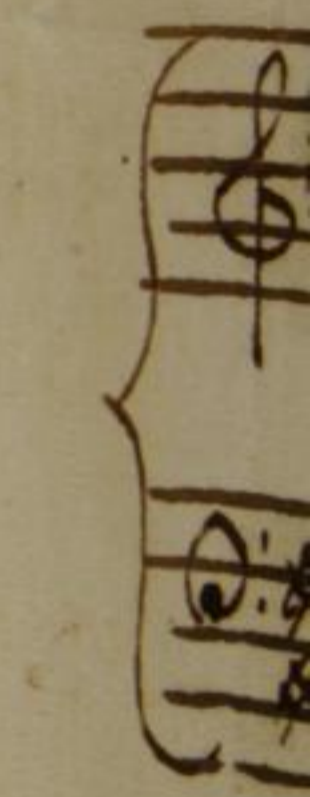
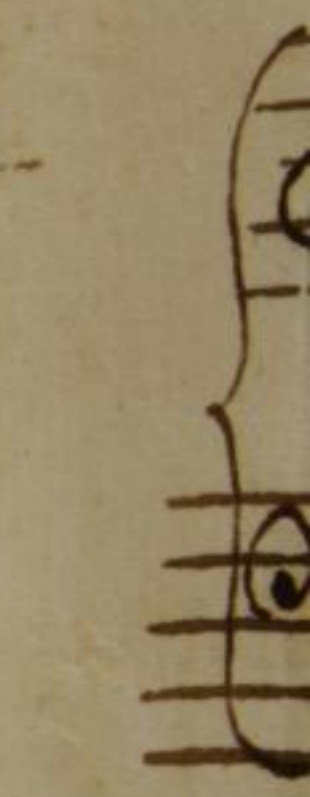
Sonata a Violino solo.



Li. (an)

F.

639



1

Gi. Carlo Ambrosio Sonata A' violino solo Sonati

F.
639

1



A page of handwritten musical notation on aged, yellowed paper. The page contains ten systems of staves, each consisting of a treble clef staff and a bass clef staff. The music is written in a historical style, featuring various note values, rests, and accidentals. The first system begins with a treble clef staff containing a whole note with a sharp sign, followed by a bass clef staff with a melodic line. The word "largo" is written in cursive below the first bass staff. The notation includes many slurs and ties, indicating a continuous melodic flow. The paper shows signs of age, including some staining and a small tear near the bottom center.

Handwritten musical score for piano, consisting of ten systems of two staves each. The notation includes treble and bass clefs, a key signature of one sharp (F#), and various rhythmic values such as eighth and sixteenth notes. A "piano" dynamic marking is present in the sixth system.

Handwritten musical score on aged paper, consisting of ten systems of two staves each. The notation is in brown ink and includes treble and bass clefs, a key signature of two sharps (F# and C#), and various rhythmic values such as eighth, sixteenth, and dotted notes. The music is arranged in a grand staff format. The final system shows a double bar line and a fermata on the bass staff.



