

Sinfonia melodica TWV 50:2

Violino II

G. P. Telemann (1681-1767)

[1.] Allegro assai

6

11

16

23

29

41

47

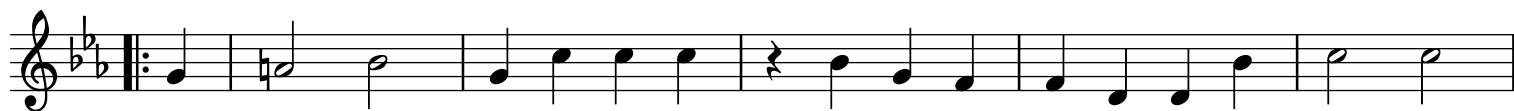
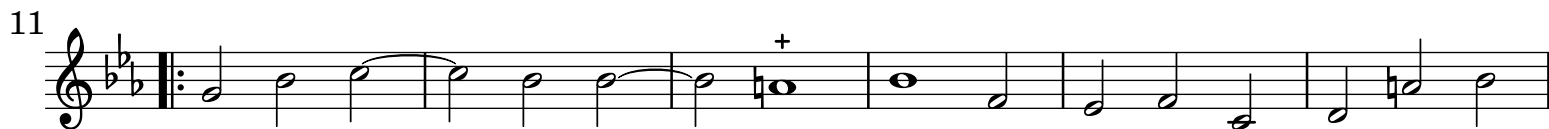
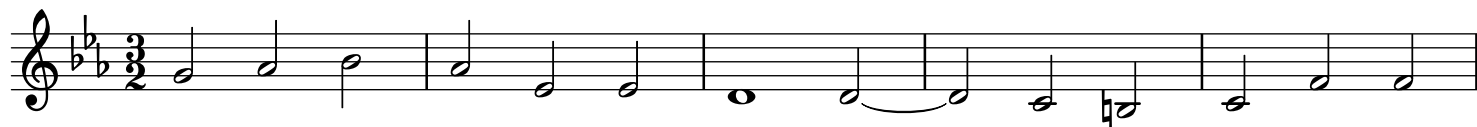
57

67

73

79

[2.] Sarabande - Hautbois Les 2 alternatives, autant dans le Fort que dans le Doux



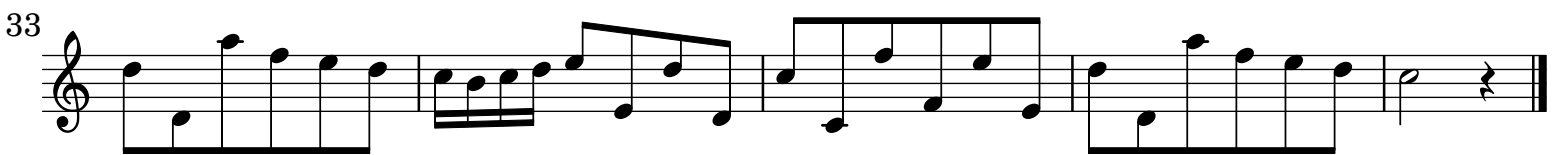
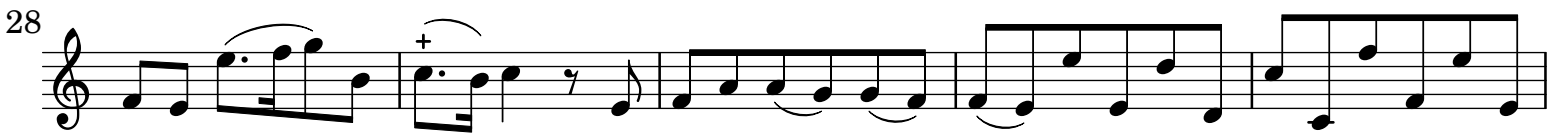
[4.] Menuet en Rondeau



[5.] Loure A l'unison



[6.] Chaconnette



[7.] Gigue en Canarie - Tres vite

