

Sylvio Lazzari (1857-1944)

Octuor Op.20 (1889)

Bassoon 1

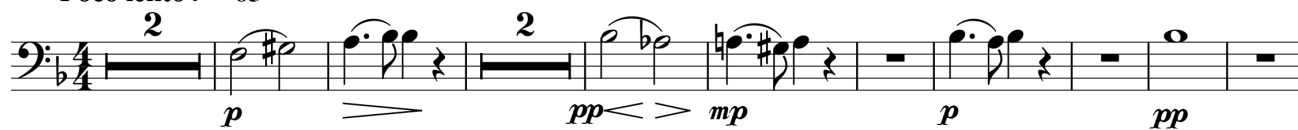
Octuor Op. 20

Bassoon 1

I - Introduction - Allegro

Lazzari

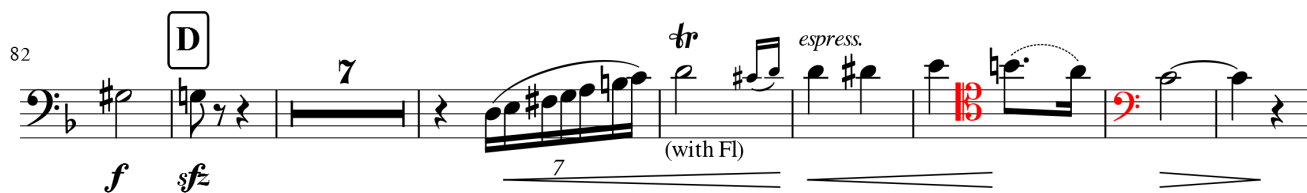
Poco lento $\text{♩} = 63$



14 poco rit. **A** a tempo



27 Allegro con fuoco $\text{♩} = 100$



97 **10** (with Fl) *tr* *espress.* **mf** **4**

117 **E** [poco meno mosso ♩ = 90] *poco marcato* **mf**

126 **p**

139 **pp** **pp**

153 **F** [accel. a Tempo 1] **6** *tr* (2) (4) (6) (8) **p** *cresc. poco a poco* **f**

171 **G** **f**

178 **ff** **f**

187 **ff** **ff** **ff**

196 **GP** 3 **GP** **H** [Tempo 2, poco meno] (to fore) *mf*

(Cl) (Fl)

Musical staff 196-215 in bass clef. It begins with a blue 'GP' and a blue dash. Measure 196 has a '3' above it. Measure 197 has a blue 'GP' and a blue dash. Measure 198 has a boxed 'H' and a '4' above it. Measure 199 has an '8' above it. Measure 200 has '(to fore)' above it. Measures 201-205 contain eighth-note patterns. Dynamics include *mf*. Instrumentation includes (Cl) and (Fl).

216 (CA) *p* *f*

Musical staff 216-221 in bass clef. Measure 216 has '(CA)' above it. Measures 217-221 contain eighth-note patterns. Dynamics include *p* and *f*.

222 **J** [a tempo] (CA) (Cl) (Bn 1) (Fl, Ob) *f*

Musical staff 222-239 in bass clef. Measure 222 has a boxed 'J' and '[a tempo]' above it. Measure 223 has a '9' above it. Measure 224 has a '2' above it. Measures 225-239 contain eighth-note patterns. Dynamics include *f*. Instrumentation includes (CA), (Cl), (Bn 1), and (Fl, Ob).

240 *mp* *p* *f*

Musical staff 240-249 in bass clef. Measures 240-249 contain eighth-note patterns. Dynamics include *mp*, *p*, and *f*.

250 **K** 3 (Fl) *f* 2

Musical staff 250-259 in bass clef. Measure 250 has a boxed 'K' above it. Measure 251 has a '3' above it. Measure 252 has '(Fl)' above it. Measure 253 has a red 'B' above it. Measure 254 has a '2' above it. Measures 250-259 contain eighth-note patterns. Dynamics include *f*.

260 *mp* *f* *mf* *p* *mf*

Musical staff 260-267 in bass clef. Measures 260-267 contain eighth-note patterns. Dynamics include *mp*, *f*, *mf*, *p*, and *mf*.

268 *fp* *p*

Musical staff 268-275 in bass clef. Measures 268-275 contain eighth-note patterns. Dynamics include *fp* and *p*.

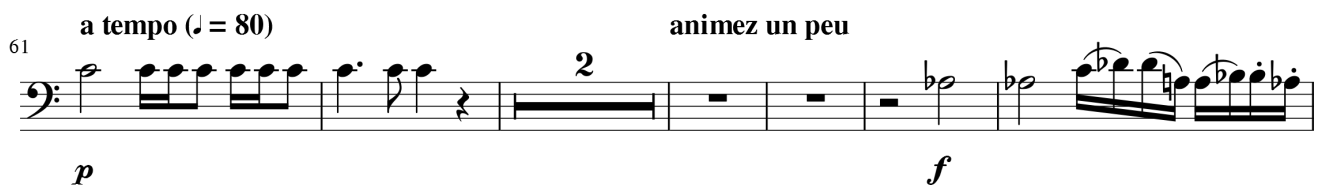
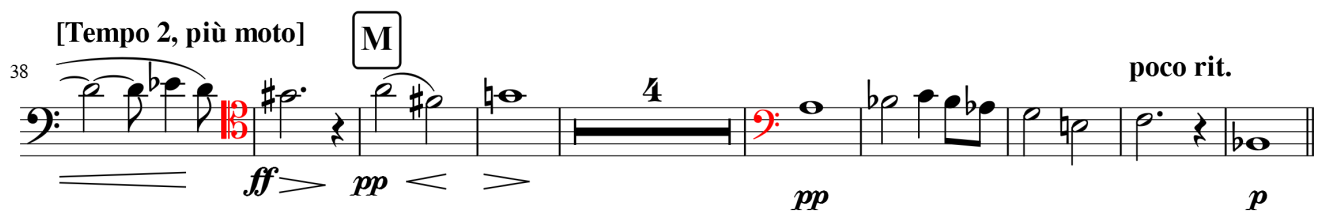
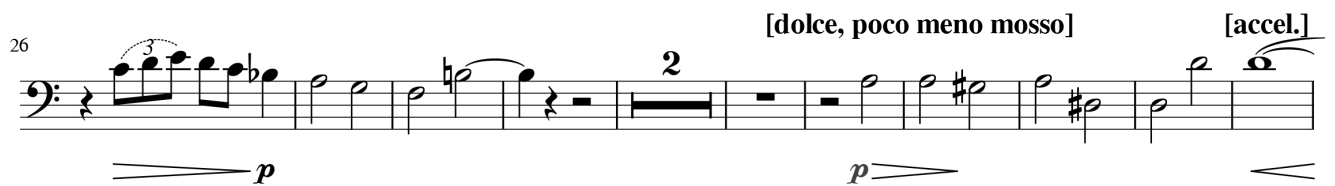
Octuor Op. 20

Bassoon 1

II - Adagio

Lazzari

Adagio (♩ = 60)



73 **O**

f *ff*

75 **Animé**

77 **Revenez petit à petit au mouv't (♩ = 72)**

ff **P**

(Hn 2, Bn 2 on beat, others off)

86 **rit. molto** **P** **a tempo (♩ = 72)**

p *espress.*

(Cl, Bn 2 on beat others off) *poco a poco cresc.*

105

119

p *ff*

126 **Q**

pp *pp* *pp* *p*

137 **R** **Tempo 1 (♩ = 60)**

pp *p* *f* *ff*

molto cresc. e poco rit. più mosso

152 **♩ = 76 poco a poco rall. e sempre dim. sino al fine**

pp *ppp*

Morendo **molto rit.**

(Bn 2) **2** **3** **5** **(Fl CA) (w Cl)**

Octuor Op. 20

Bassoon 1

III - Finale

Lazzari

Allegro Scherzando ♩(♩)= 120

Measure 1: Bass clef, key signature of one flat (Bb). The measure contains a whole rest, followed by a quarter note G2, a quarter note F2, a quarter note E2, and a quarter note D2. A red 'B' is written above the staff.

Measure 10: *f* marcato. The measure contains a quarter note G2, a quarter note F2, a quarter note E2, and a quarter note D2. A red 'B' is written above the staff.

Measure 15: *leggero*. The measure contains a quarter note G2, a quarter note F2, a quarter note E2, and a quarter note D2. A red 'B' is written above the staff.

Measure 31: *f* marcato. The measure contains a quarter note G2, a quarter note F2, a quarter note E2, and a quarter note D2. A red 'B' is written above the staff.

Measure 35: *f*. The measure contains a quarter note G2, a quarter note F2, a quarter note E2, and a quarter note D2. A red 'B' is written above the staff.

Measure 49: *ff* marcato. The measure contains a quarter note G2, a quarter note F2, a quarter note E2, and a quarter note D2. A red 'B' is written above the staff.

Measure 54: *ff*. The measure contains a quarter note G2, a quarter note F2, a quarter note E2, and a quarter note D2. A red 'B' is written above the staff.

Measure 58: *ff*. The measure contains a quarter note G2, a quarter note F2, a quarter note E2, and a quarter note D2. A red 'B' is written above the staff.

Measure 62: *fp* *ff* *fp* *fp* *ff*. The measure contains a quarter note G2, a quarter note F2, a quarter note E2, and a quarter note D2. A red 'B' is written above the staff.

Measure 68: *f* *p* *fp*. The measure contains a quarter note G2, a quarter note F2, a quarter note E2, and a quarter note D2. A red 'B' is written above the staff.

75 **U** poco rit. Poco meno (♩ = 108)

89 **V**

99 **W**

117 Revenez petit à petit au premier mouvement

126 Tempo 1 (♩ = 120)

131 **X** (Fl Ob to fore)

136 marcato

144

159 marcato rit. **Z** a tempo

165 marcato

169

Detailed description of the musical score: The score is for a bassoon part, spanning measures 75 to 169. It begins with a rehearsal mark 'U' at measure 75, marked 'poco rit. Poco meno' with a tempo of ♩ = 108. The music features various dynamics including *p*, *mf*, *pp*, *fp*, *p dolce*, and *pp*. There are several triplet markings (3) and a sextuplet (6). A rehearsal mark 'V' appears at measure 89, and 'W' at measure 99. At measure 117, the instruction 'Revenez petit à petit au premier mouvement' is given. Measure 126 marks the start of 'Tempo 1' (♩ = 120), where the key signature changes from one flat to two flats. A rehearsal mark 'X' is at measure 131, with the instruction '(Fl Ob to fore)'. Measure 136 is marked 'marcato'. Measure 144 has a rehearsal mark 'Z' and 'a tempo'. Measure 159 is marked 'marcato' and 'rit.'. Measure 165 is marked 'marcato'. Measure 169 ends with a rehearsal mark 'Z' and 'a tempo'. The score includes various articulations such as slurs, accents, and dynamic markings like *ff* and *f*. There are also some red markings in the original image, possibly indicating specific notes or measures.

173 **molto rit.** **ZZ** **a tempo meno mosso** (♩ = 108)

p *pp*

187 *dolce* **poco rall.** **molto rit.**

f *fp* *p* *pp*

199 **Andante** (♩ = 54)

p *f*

206 **Tempo 1 accelerando**

p *f*

210

ff *fff*