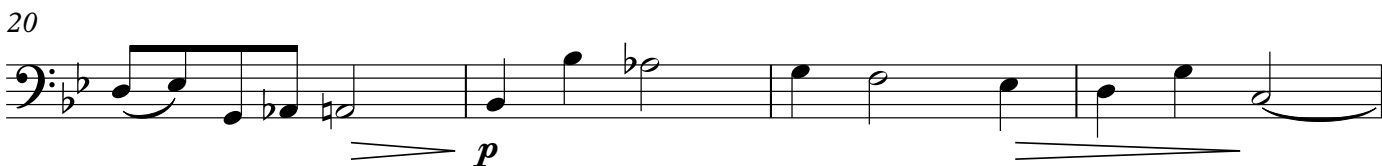
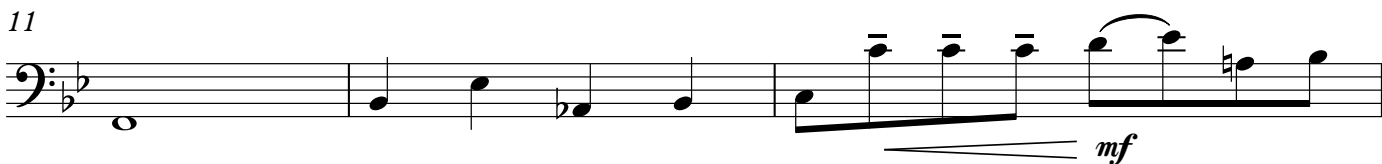


Violoncello Quartet from Sonata in 3 parts No. 9 in c

Henry Purcell [Viola part by R. Bartoli] Z 798

Moderato ♩ = 60



1 CANZONA: Allegro

Vln. II

2

Measures 1-5 of the piece. Measure 1 is a whole rest. Measure 2 is a whole note G2. Measures 3-5 are eighth notes: G2, A2, Bb2, C3, D3, E3, F3, G3. A dynamic marking of *f* is placed below measure 5.

6

Measures 6-9. Measure 6: G2, A2, Bb2, C3. Measure 7: D3, E3, F3, G3. Measure 8: A2, Bb2, C3, D3. Measure 9: E3, F3, G3, A2.

10

Measures 10-12. Measure 10: G2, A2, Bb2, C3. Measure 11: D3, E3, F3, G3. Measure 12: A2, Bb2, C3, D3.

13

Measures 13-14. Measure 13: G2, A2, Bb2, C3. Measure 14: D3, E3, F3, G3.

15

Measures 15-20. Measure 15: whole rest. Measure 16: whole rest. Measure 17: G2, A2, Bb2, C3. Measure 18: D3, E3, F3, G3. Measure 19: A2, Bb2, C3, D3. Measure 20: E3, F3, G3, A2. A dynamic marking of *p* is placed below measure 20.

21

Measures 21-23. Measure 21: G2, A2, Bb2, C3. Measure 22: D3, E3, F3, G3. Measure 23: A2, Bb2, C3, D3. A dynamic marking of *mf* is placed below measure 21, and a dynamic marking of *p* is placed below measure 23.

24

Measures 24-27. Measure 24: whole rest. Measure 25: G2, A2, Bb2, C3. Measure 26: D3, E3, F3, G3. Measure 27: A2, Bb2, C3, D3. A dynamic marking of *cresc.* is placed below measure 25.

Violoncello

27

mf

31

35

p

38 **Adagio**

f mf

40

mp p

45

f

1 **Allegro**
Vln. I

mf

4

8

11

Vln. I

