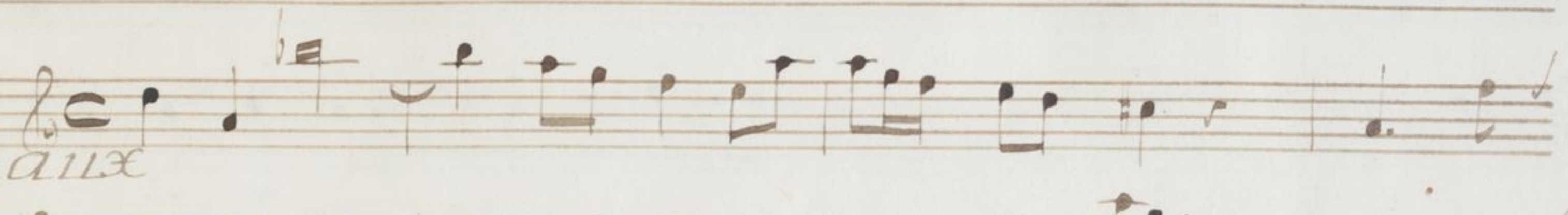


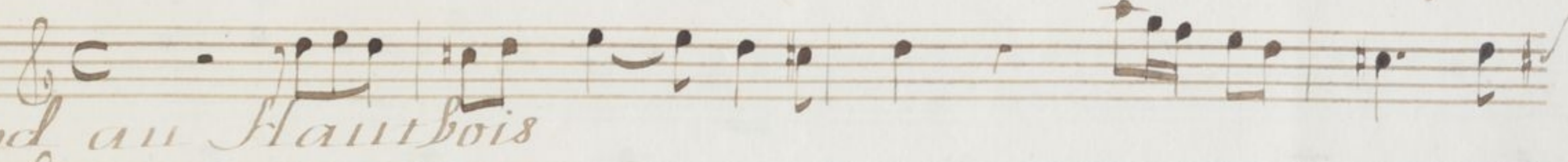
Cantata Prima

Chaloumaux



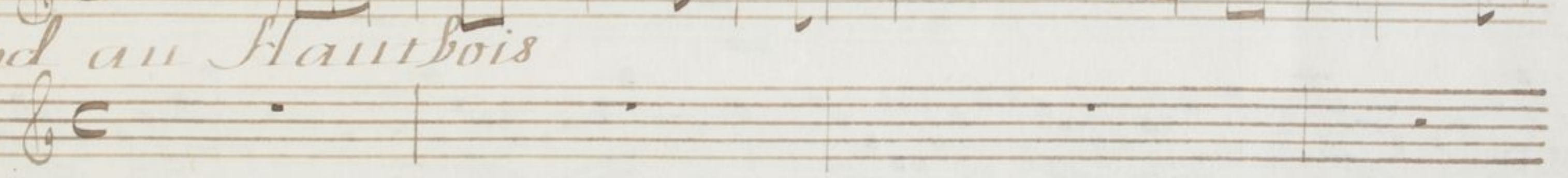
Musical notation for Chaloumaux, featuring a treble clef, common time signature, and a melodic line with various note values and rests.

Flute



Musical notation for Flute, featuring a treble clef, common time signature, and a melodic line with various note values and rests.

Memand au Hautbois



Musical notation for Memand au Hautbois, featuring a treble clef, common time signature, and a melodic line with various note values and rests.

Violini



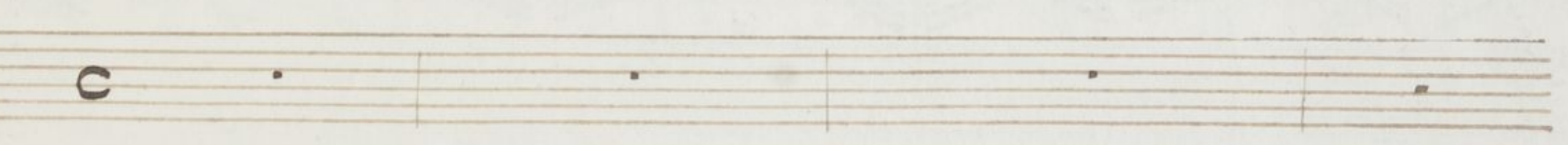
Musical notation for Violini, featuring a treble clef, common time signature, and a melodic line with various note values and rests.

Tordini



Musical notation for Tordini, featuring a treble clef, common time signature, and a melodic line with various note values and rests.

e Serini



Musical notation for e Serini, featuring a treble clef, common time signature, and a melodic line with various note values and rests.

Francesi




Musical notation for Francesi, featuring a treble clef, common time signature, and a melodic line with various note values and rests.

Aria

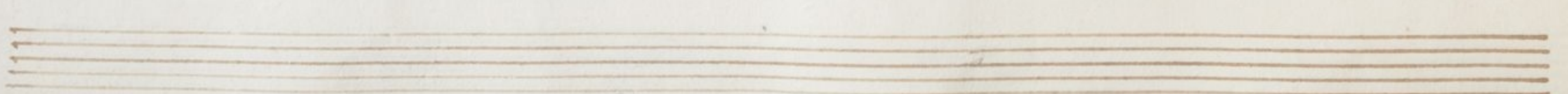
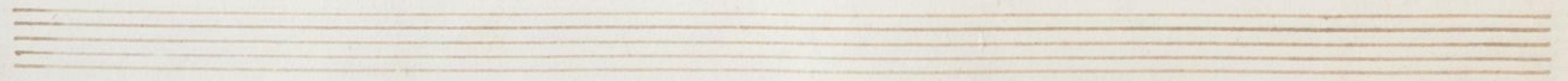
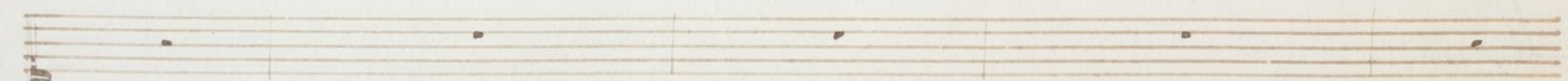
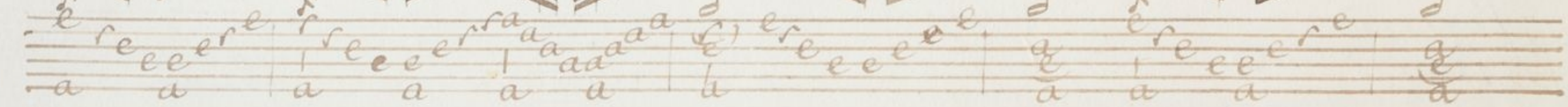


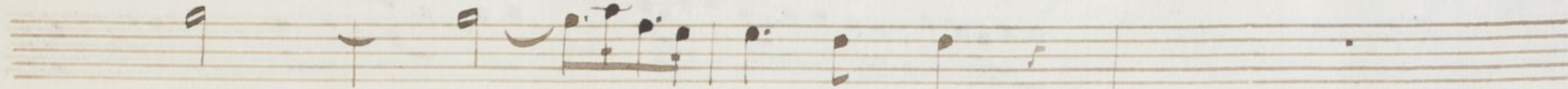
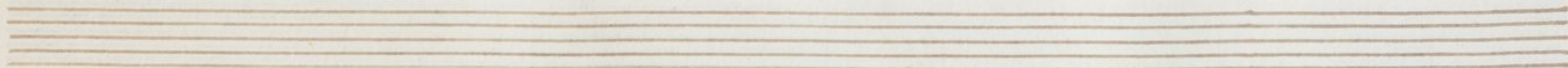
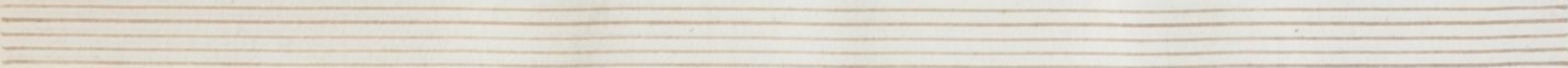
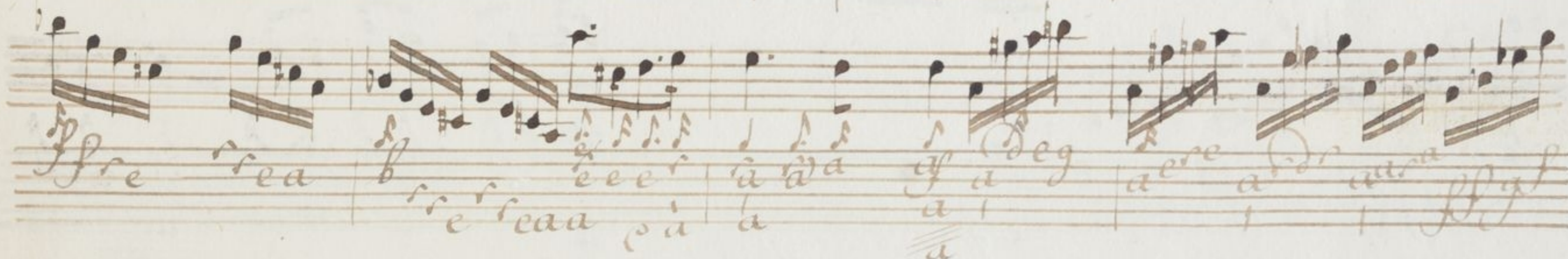
Musical notation for Aria, featuring a treble clef, common time signature, and a melodic line with various note values and rests.



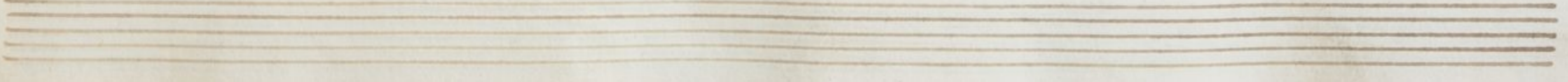
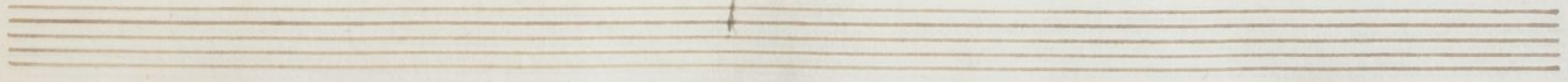
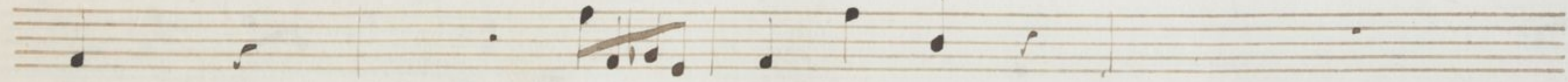
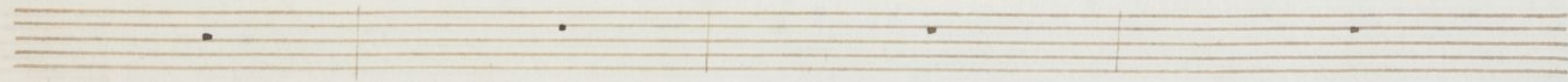
Musical notation for Aria continuation, featuring a treble clef, common time signature, and a melodic line with various note values and rests.



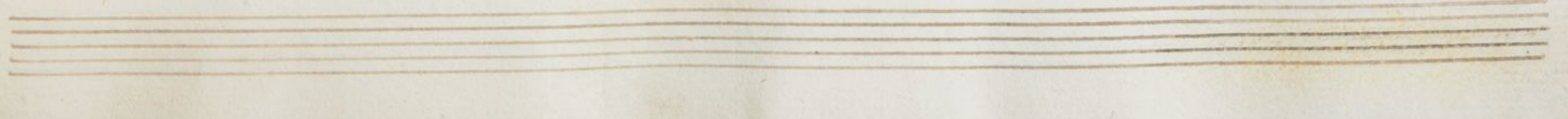
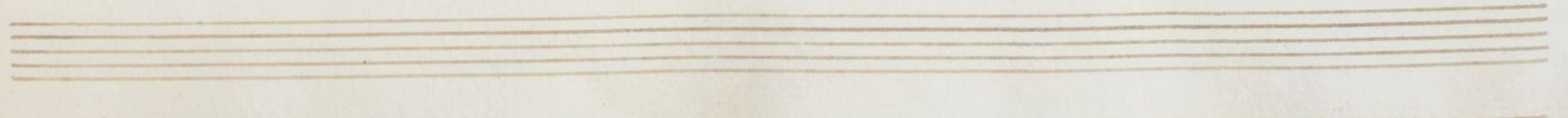
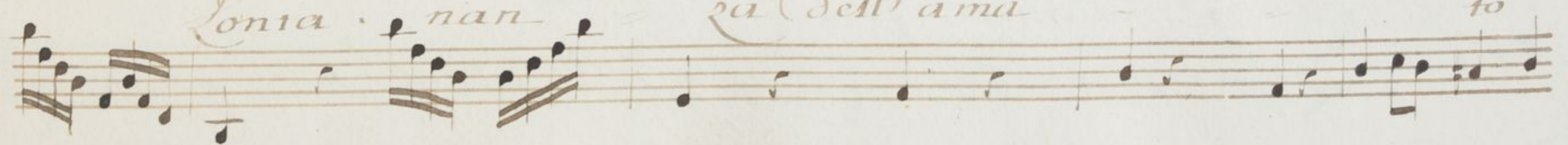
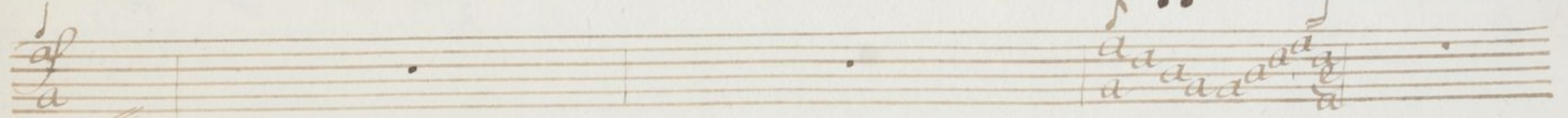
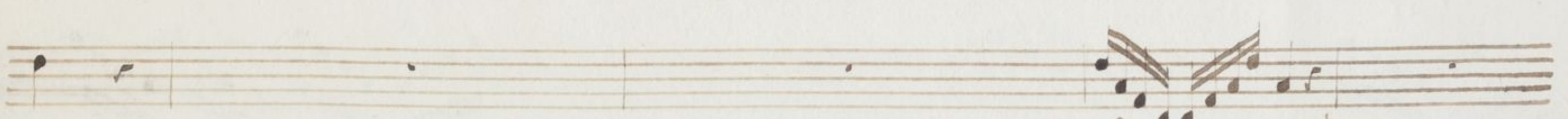
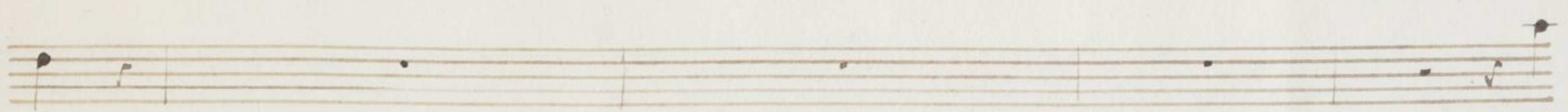
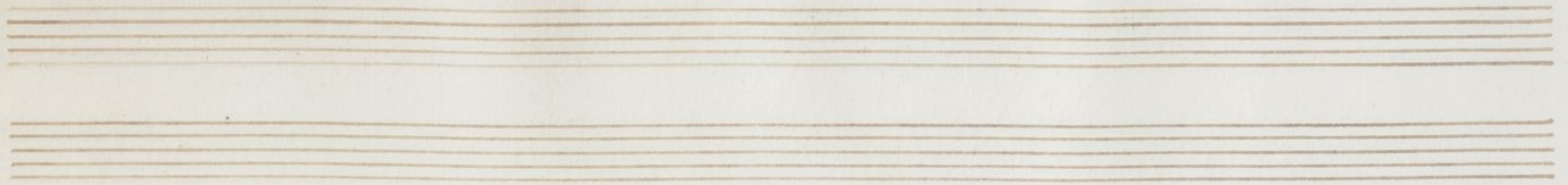


Fre rea re rea a a a a Deg aere a a a a a



A handwritten musical score on aged, yellowed paper. The score consists of several staves. The top two staves are empty. The third and fourth staves contain a melodic line with notes and rests. The fifth staff contains a rhythmic pattern of eighth notes, with the lyrics "ca ca ca" written below it. The sixth staff contains a vocal line with lyrics "Pér a è à a a a" and "a a a a" written below it. The seventh and eighth staves contain a bass line with notes and rests. The bottom two staves are empty.



lonia . nan . za Dell' ama to

aa
a a a a a a a

Handwritten musical score for the piece "Piangere Sida Filome". The score is written on ten staves. The top two staves are empty. The third and fourth staves contain the vocal melody. The fifth staff contains the piano accompaniment, featuring a treble clef and a key signature of one flat (B-flat). The lyrics are written below the piano part. The piece begins with a treble clef and a key signature of one flat. The music is written in a cursive, handwritten style. The lyrics are: "Piangere Sida Filome". The score includes various musical notations such as notes, rests, and dynamic markings like *pp* and *ff*.

Piangere Sida Filome

pp
e e e e r r
a

pp
e e e e a a d e
a f f r a e r e
e

aaa
aaa
Corradre terra
aaa

na

Lonia

The image shows a page of handwritten musical notation on aged, yellowed paper. At the top right, the number '5' is written. The page contains ten horizontal staves. The first two staves are empty. The third staff begins with a treble clef and contains a melodic line. The fourth staff contains a bass line. The fifth staff features a complex, multi-measure rest or a dense instrumental passage. The sixth staff contains a vocal line with the lyrics 'aaa Corradre terra aaaa' written in a cursive hand. The seventh staff continues the vocal line with the lyrics 'na'. The eighth staff contains a melodic line with a multi-measure rest. The ninth staff contains a bass line. The tenth staff is empty. The notation is in brown ink and includes various note values, rests, and clefs.

Handwritten musical score on aged paper. The page contains several staves of music. The top two staves are empty. The third staff begins with a treble clef and contains a melodic line. The fourth staff contains a complex, multi-measure passage with many beamed notes. The fifth staff contains lyrics: *aere e aere a* and *ada abaa*. The sixth staff contains lyrics: *nan - za dell' amato* and *piange*. The seventh staff contains lyrics: *Sida* and *Silo*. The bottom two staves are empty.

aere e aere a

ada abaa

nan - za dell' amato

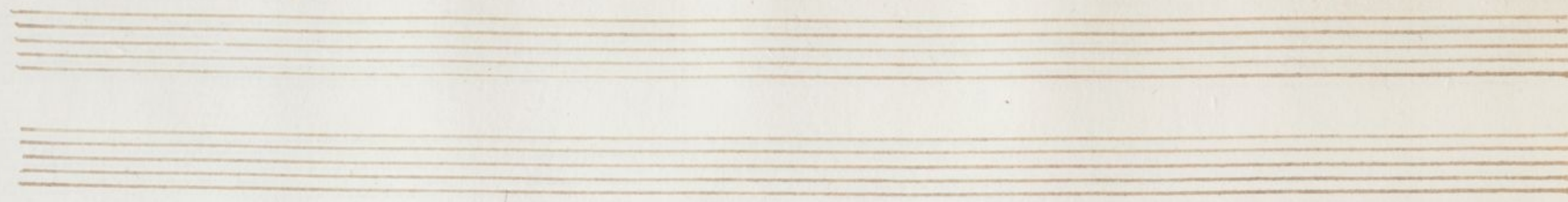
piange

Sida

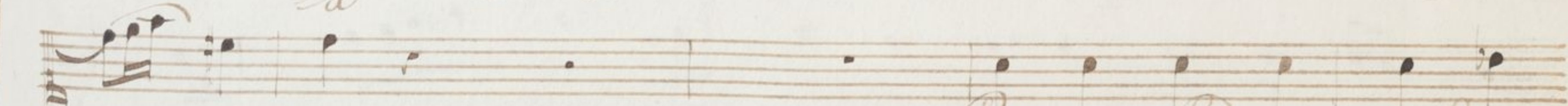
Silo

aba' arba' rbar' mar' orr' acere' aae' acere' aaaa' abaa' rbar' ffff' acere' aaaa'

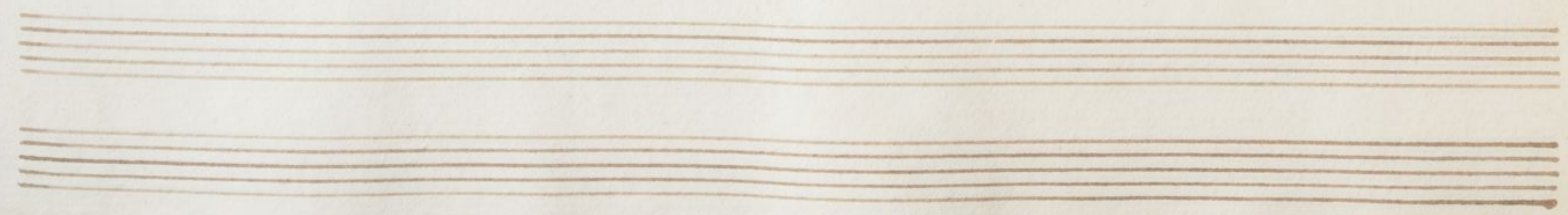
me



aar ae af barrab aeg aere ardr aara



na Piange Fida Filo



Musical notation on two staves. The upper staff contains a series of dotted rhythms, while the lower staff features a melodic line with eighth and sixteenth notes.

Musical notation on a single staff with a treble clef and a key signature of one sharp (F#). The notation includes a series of eighth notes and a final quarter note.

carac

Musical notation on a single staff with a treble clef and a key signature of one sharp. It begins with a half note followed by a melodic line of eighth notes.

me

Musical notation on a single staff with a treble clef and a key signature of one sharp. It continues the melodic line from the previous staff, ending with a quarter note.

na

This page of handwritten musical notation features several staves. The top two staves are empty. The third and fourth staves contain a vocal line with lyrics: "a a e e e e r e a a e e e e r e a a". The fifth staff contains the lyrics "I se sea" written in a decorative, cursive script. The sixth and seventh staves contain a piano accompaniment with various rhythmic patterns and slurs. The bottom two staves are empty.

A handwritten musical score on aged paper, featuring a vocal line and piano accompaniment. The score is written on nine staves. The vocal line is on the third staff from the top, with lyrics written below it. The piano accompaniment is on the fourth staff, featuring complex chordal textures and melodic lines. The lyrics are: *re rea a pa a a a a a Deg aere aara*. The musical notation includes various note values, rests, and dynamic markings such as *ff*, *gf*, and *lgf*. The paper shows signs of age, including some staining and discoloration.

A handwritten musical score on aged, yellowed paper. The score consists of several staves. The top two staves are empty. The third and fourth staves contain musical notation with lyrics written below them. The lyrics are in a cursive hand and include the words "rara et" and "à à à à à". The fifth and sixth staves also contain musical notation. The bottom two staves are empty. The paper shows signs of age, including some staining and discoloration.

rara et
à à à à à
è Pi

Destra forma il pianto che allor è piu dolce il can.

Handwritten musical score on ten staves. The score includes vocal lines with lyrics and instrumental accompaniment. The lyrics are "quando è più crudel la pe".

10 *quando è più crudel la pe*

This page of handwritten musical notation consists of ten staves. The first staff is empty. The second staff contains a melodic line with various note values, including eighth and sixteenth notes, and rests. The third staff contains a series of rests. The fourth staff features a complex melodic line with many beamed notes, including sixteenth and thirty-second notes. The fifth staff contains a series of rests. The sixth staff contains a melodic line with various note values and rests. The seventh staff contains a melodic line with various note values and rests. The eighth staff contains a melodic line with various note values and rests. The ninth staff contains a melodic line with various note values and rests. The tenth staff contains a melodic line with various note values and rests. The notation is written in brown ink on aged paper. There are some dynamic markings, including 'na' and 'quando f', written in cursive. The page number '10' is written in the top right corner.

This page contains a handwritten musical score on ten staves. The notation is in brown ink on aged paper. The first staff has a treble clef and a key signature of one flat. The second staff has a bass clef. The third staff has a treble clef and contains a complex passage with many beamed notes. The fourth staff has a bass clef. The fifth staff has a treble clef and contains the lyrics "piu' crudel la pe" written in cursive. The sixth staff has a bass clef. The seventh staff has a treble clef. The eighth staff has a bass clef. The ninth and tenth staves are empty.

A handwritten musical score on ten staves. The notation includes various note values, rests, and clefs. The word "Da Capo" is written in cursive at the end of the piece. The score is written in brown ink on aged paper.

Da Capo

na

Recit: *Piangi amante usignolo di nemico (des-*

tin. La Sorte ingrata già che del tuo dolor sollicio è il

pianto ma se nel Me provida ti diede,

Scampo la natura in danno dell' assenza ti la-

menti quando del tuo funesto e crudo, duolo

Fortu- nato esse pro termine un vuole

*Violini
Violoncelli
e Contrabbassi* *allegro*

allegro

Referre facer
 a a a a a a a a a a a a a a

vo-la presto e lascia il canno
 che lusinga le tue
 a a

a
pa a a a 4

penne *che lusinga le tue pe*

This system contains the first two staves of music. The top staff is a vocal line with lyrics *a pa a a a 4* written below it. The bottom staff is a piano accompaniment line with lyrics *penne che lusinga le tue pe* written above it.

tefer bice a a a
a b a sa

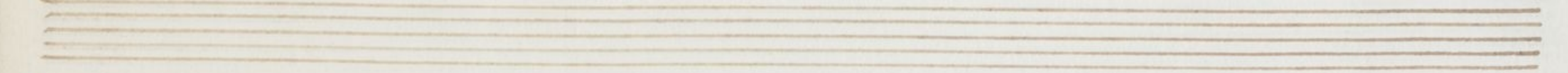
ne

This system contains the next two staves of music. The top staff is a vocal line with lyrics *tefer bice a a a* written below it. The bottom staff is a piano accompaniment line with lyrics *ne* written above it.

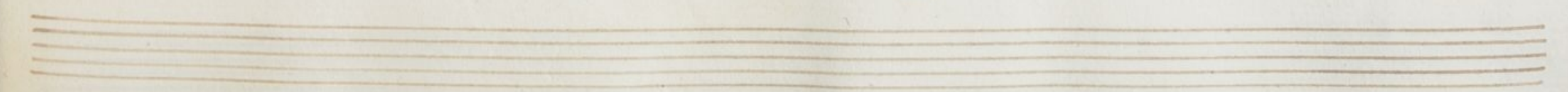
Handwritten musical score for the first system. It consists of four staves. The top staff is a vocal line with lyrics "Car" and "a". The second staff is a vocal line with lyrics "vola presto e lascia il canto che lusinga le tue". The third and fourth staves are piano accompaniment. The music is written in a cursive, historical style.

Handwritten musical score for the second system. It consists of four staves. The top staff is a vocal line with lyrics "a a e e" and "a a e e". The second staff is a vocal line with lyrics "che lusinga le tue". The third and fourth staves are piano accompaniment. The music continues in the same cursive, historical style.

Handwritten musical score for the first system, featuring vocal lines and piano accompaniment. The vocal line includes lyrics: *a4 a a a4 a a a4 a a a a a a a a a a*. The piano part includes the word *pe -*.



Handwritten musical score for the second system, featuring vocal lines and piano accompaniment. The vocal line includes lyrics: *a a a b a a a a a a a a a a*. The piano part includes the words *ne* and *Le tue pe*.



Handwritten musical score for the first system. The system consists of four staves. The top staff is a vocal line with lyrics: *a a da da a ab b da a ee da da da*. The second staff contains a vocal line with lyrics: *a a a a b a da a a ae a*. The third staff is a piano accompaniment line with the word *ne* written below it. The fourth staff is a piano accompaniment line. The music is written in brown ink on aged paper.

Handwritten musical score for the second system. The system consists of four staves. The top staff is a vocal line with lyrics: *bb ba a b da da da da ee ee ee ee da da*. The second staff contains a vocal line with lyrics: *a da a a da a da da da da da da da da da da*. The third staff is a piano accompaniment line. The fourth staff is a piano accompaniment line. The music is written in brown ink on aged paper.

Handwritten musical score for the first system. The top staff is a vocal line in treble clef, and the bottom staff is a piano accompaniment line in bass clef. The lyrics are written below the vocal line.

te per
a
ear a ear a ear
a a a a a a

già che un amoro so impugno

Handwritten musical score for the second system. The top staff is a vocal line in treble clef, and the bottom staff is a piano accompaniment line in bass clef. The lyrics are written below the vocal line.

a
a
ere a ere
a a a

Sol del bene rende de gno

Handwritten musical score for the first system. It consists of two staves for the vocal line and two staves for the piano accompaniment. The vocal line includes the lyrics "à ré à" on the first staff and "quel che ogni orri = cerca il be" on the second staff. The piano accompaniment features a melodic line in the right hand and a bass line in the left hand.

Handwritten musical score for the second system. It continues the vocal and piano parts from the first system. The vocal line includes the lyrics "par a car" on the first staff and "a a" on the second staff. The piano accompaniment continues with similar melodic and bass lines. The word "ne" is written above the piano part in the second staff.

Handwritten musical notation for the first system. The vocal line (treble clef) contains the lyrics: *a b r b*, *è gèra ra a*, *de rar a*. The piano accompaniment (bass clef) has notes corresponding to the lyrics: *e*, *a*, *a*.

Handwritten musical notation for the second system. The vocal line (treble clef) contains the lyrics: *Sol del bene rende*. The piano accompaniment (bass clef) continues the melody.

Handwritten musical notation for the third system. The vocal line (treble clef) contains the lyrics: *a a d ee*, *a*, *a a a a*. The piano accompaniment (bass clef) has notes: *a a*, *a a*.

Handwritten musical notation for the fourth system. The vocal line (treble clef) contains the lyrics: *De gno quel che ognor ricerca il be - ne, quel che*. The piano accompaniment (bass clef) continues the melody.

Handwritten musical score for the first system. It consists of three staves. The top staff is a vocal line with lyrics: *è e a a*. The middle staff is a keyboard accompaniment. The bottom staff is another vocal line with lyrics: *ognor ricerca il be ne*. The music is written in a cursive hand with various note values and rests.

Handwritten musical score for the second system. It consists of three staves. The top staff is a vocal line with lyrics: *è e a a*. The middle staff is a keyboard accompaniment. The bottom staff is another vocal line with lyrics: *quel che ognor ricerca il be*. The music continues with similar notation and structure as the first system.

Handwritten musical notation for the first system. It features a vocal line with lyrics 'e' and 'a' on the first two staves. The piano accompaniment begins on the third staff with a melodic line. The text 'Da Capo' is written in large, elegant cursive on the right side of the system.

Handwritten musical notation for the second system. The vocal line continues with lyrics 'ne' and 'vola e quando ritroui il sospi-rato'. The piano accompaniment provides harmonic support with chords and a steady bass line.

Handwritten musical notation for the third system. The vocal line continues with lyrics 'ben il caro amante vedendo allor cangiate in'. The piano accompaniment continues with a consistent rhythmic pattern.

Handwritten musical notation for the fourth system. The vocal line concludes with lyrics 'gioie le tolle-cite fatiche con piu' vaga ar-'. The piano accompaniment ends with a final chord and a fermata.

monia migliorando il motivo. Del concerto co -

Si Spiegar potrai il tuo conten - to

Allegro Pro - uoluer Si nel Lieto Sen vn de -

Per - to Sen - za equal pro - uoluer Si nel Lieto Sen

Ad libitum Sen - za e qual

tutti unisoni

Ritorn

This system features a vocal line with lyrics 'a ra a' and a piano accompaniment in 3/4 time. The vocal line consists of eighth notes, while the piano accompaniment uses quarter and eighth notes.

This system continues the musical piece with a vocal line and piano accompaniment. The vocal line includes lyrics 'a ra a' and 'a ra a'. The piano accompaniment features a melodic line in the right hand and a bass line in the left hand.

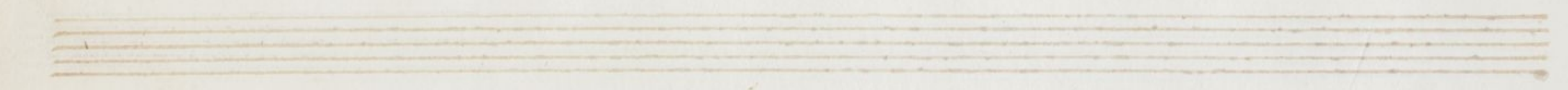
This system concludes the piece with a vocal line and piano accompaniment. The vocal line includes lyrics 'a ra a' and 'a ra a'. The piano accompaniment features a melodic line in the right hand and a bass line in the left hand.

Segue Subito

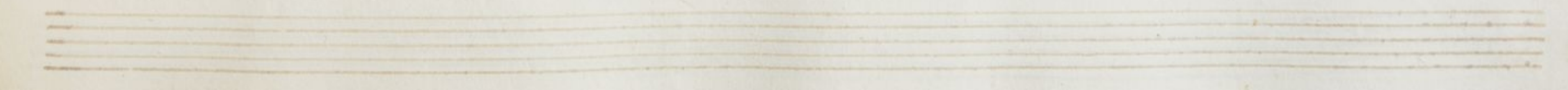
Handwritten musical score for the first system. It consists of four staves. The top staff is a vocal line in treble clef with a 3/4 time signature. The second staff is a vocal line in alto clef with a 3/4 time signature, containing the lyrics "a a a a a a a a a a a a a a a a". The third staff is a vocal line in bass clef with a 3/4 time signature, containing the lyrics "Per che aggiunger si ma al ben che il ben". The fourth staff is a basso continuo line in bass clef with a 3/4 time signature.

Handwritten musical score for the second system. It consists of four staves. The top staff is a vocal line in treble clef. The second staff is a vocal line in alto clef with a 3/4 time signature, containing the lyrics "a a b a a a a a a a a a a a a a a a a a a a". The third staff is a vocal line in bass clef with a 3/4 time signature, containing the lyrics "venga Doppo il mal che il ben venga Doppo il mal". The fourth staff is a basso continuo line in bass clef with a 3/4 time signature.

Handwritten musical score for the first system. The top staff is a vocal line with lyrics: *ra ra ra ra ra ra ra ra ra ra*. The bottom staff is a piano accompaniment. The music is written in a cursive style on aged paper.



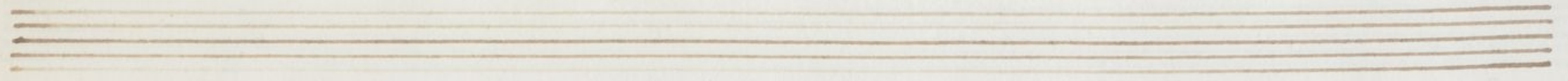
Handwritten musical score for the second system. The top staff is a vocal line with lyrics: *Co a a a a a a a a a a a a a a a a*. The bottom staff is a piano accompaniment with lyrics: *doppo il mal Prouo hor Si nel Piero*. The music is written in a cursive style on aged paper.



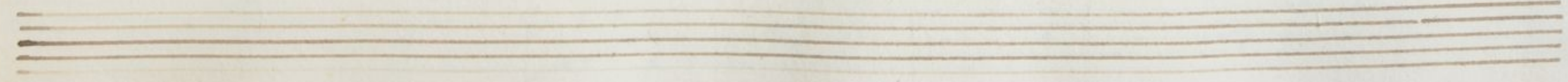
Handwritten musical score for the first system. The top staff is a vocal line with lyrics: *Sen un dileto Senza equal prouo hor*. The bottom staff is a piano accompaniment. The music is written in a single system with a brace on the left.

Handwritten musical score for the second system. The top staff is a vocal line with lyrics: *Li nel Pietro Sen un di let to Senza e*. The bottom staff is a piano accompaniment. The music is written in a single system with a brace on the left.

Handwritten musical score for the first system. It consists of three staves. The top staff is a vocal line with notes and lyrics. The middle staff is a basso continuo line with notes and figured bass. The bottom staff is a vocal line with notes and lyrics. The lyrics are: *qual prouo hor Si nel lieto Sen. vn. (di*



Handwritten musical score for the second system. It consists of three staves. The top staff is a vocal line with notes and lyrics. The middle staff is a basso continuo line with notes and figured bass. The bottom staff is a vocal line with notes and lyrics. The lyrics are: *Senza e qual prouo hor Si nel lieto*



Handwritten musical score for the first system. The top staff is a vocal line with lyrics: *a) a a a a a a a a a a a a a a a a*. The bottom staff is a piano accompaniment with lyrics: *Senza diletto Senza e qual*. The music is written in a cursive style with various note values and rests.

Handwritten musical score for the second system. The top staff continues the vocal line with lyrics: *a e a a a a a a a a a a a a a a a a*. The bottom staff continues the piano accompaniment with lyrics: *Senza Senza e qual*. The system concludes with the word *Fine* written in a large, decorative script.