

# Ouverture

Jean-Baptiste Lully (1632-1687)  
Arranged by Jane Thomas & Catherine Shackell

Slow  $\text{♩} = 60$

Flute / Oboe 1

Oboe / Flute 2

B♭ Clarinet 1

B♭ Clarinet 2

Bass Clarinet

Bassoon

Soprano Saxophone

Alto Saxophone

Horn

B♭ Trumpet

Trombone

Bass Drum

Violins 1

Violins 2

Viola

Violoncellos

6

Fl. / Ob 1

Ob. / Fl. 2

Bb Cl. 1

Bb Cl. 2

Bass Cl.

Bsn.

S. Sax.

A. Sax.

Hn.

Bb Tpt.

Trb.

B. Dr.

Vlns. 1

Vlns. 2

Vla.

Vcls.

13 A

Fl. / Ob 1  
Ob. / Fl. 2  
B♭ Cl. 1  
B♭ Cl. 2  
Bass Cl.  
Bsn.  
S. Sax.  
A. Sax.  
Hn.  
B♭ Tpt.  
Trb.  
B. Dr.  
Vlns. 1  
Vlns. 2  
Vla  
Vcls.

18

Fl. / Ob 1

Ob. / Fl. 2

B♭ Cl. 1

B♭ Cl. 2

Bass Cl.

Bsn.

S. Sax.

A. Sax.

Hn.

B♭ Tpt.

Trb.

B. Dr.

Vlns. 1

Vlns. 2

Vla

Vlcs.

**B** Lively  $\text{♩} = 200$

25

Fl. / Ob 1

Ob. / Fl. 2

B♭ Cl. 1

B♭ Cl. 2

Bass Cl.

Bsn.

S. Sax.

A. Sax.

Hn.

B♭ Tpt.

Trb.

B. Dr.

Vlns. 1

Vlns. 2

Vla

Vlcs.

35

Fl. / Ob 1

Ob. / Fl. 2

B♭ Cl. 1

B♭ Cl. 2

Bass Cl.

Bsn.

S. Sax.

A. Sax.

Hn.

B♭ Tpt.

Trb.

B. Dr.

Vlins. 1

Vlins. 2

Vla

Vlcs.

46

Fl. / Ob 1

Ob. / Fl. 2

Bb Cl. 1

Bb Cl. 2

Bass Cl.

Bsn.

S. Sax.

A. Sax.

Hn.

Bb Tpt.

Trb.

B. Dr.

Vlns. 1

Vlns. 2

Vla

Vcls.

55

Fl. / Ob 1

Ob. / Fl. 2

B♭ Cl. 1

B♭ Cl. 2

Bass Cl.

Bsn.

S. Sax.

A. Sax.

Hn.

B♭ Tpt.

Trb.

B. Dr.

Vlns. 1

Vlns. 2

Vla

Vlcs.



63

Fl. / Ob 1

Ob. / Fl. 2

Bb Cl. 1

Bb Cl. 2

Bass Cl.

Bsn.

S. Sax.

A. Sax.

Hn.

Bb Tpt.

Trb.

B. Dr.

Vlns. 1

Vlns. 2

Vla.

Vcls.

72

Fl. / Ob 1

Ob. / Fl. 2

Bb Cl. 1

Bb Cl. 2

Bass Cl.

Bsn.

S. Sax.

A. Sax.

Hn.

Bb Tpt.

Trb.

B. Dr.

Vlns. 1

Vlns. 2

Vla

Vcls.

81

Fl. / Ob 1

Ob. / Fl. 2

B♭ Cl. 1

B♭ Cl. 2

Bass Cl.

Bsn.

S. Sax.

A. Sax.

Hn.

B♭ Tpt.

Trb.

B. Dr.

Vlins. 1

Vlins. 2

Vla

Vlcs.

91

Fl. / Ob 1

Ob. / Fl. 2

B♭ Cl. 1

B♭ Cl. 2

Bass Cl.

Bsn.

S. Sax.

A. Sax.

Hn.

B♭ Tpt.

Trb.

B. Dr.

Vlns. 1

Vlns. 2

Vla

Vlcs.

# Le Bourgeois Gentilhomme

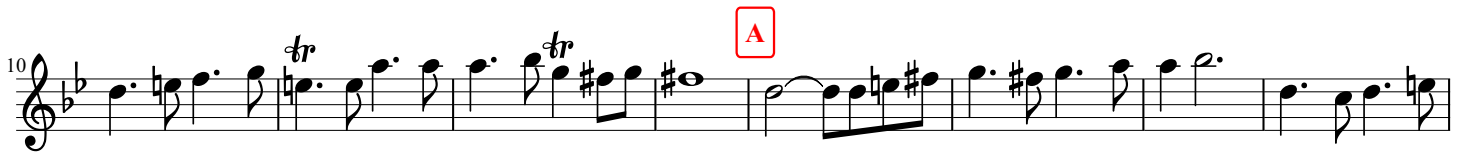
## Ouverture

Flute / Oboe 1

Jean-Baptiste Lully (1632-1687)

Arranged by Jane Thomas & Catherine Shackell

Slow  $\text{♩} = 60$



# Le Bourgeois Gentilhomme

## Ouverture

Flute / Oboe 2

Jean-Baptiste Lully (1632-1687)

Arranged by Jane Thomas & Catherine Shackell

Slow  $\text{♩} = 60$



**B** Lively  $\text{♩} = 200$   
13



# Le Bourgeois Gentilhomme

## Ouverture

Jean-Baptiste Lully (1632-1687)

Arranged by Jane Thomas & Catherine Shackell

### Clarinet 1

Slow  $\text{♩} = 60$



# Le Bourgeois Gentilhomme

## Ouverture

Jean-Baptiste Lully (1632-1687)

Arranged by Jane Thomas & Catherine Shackell

### Clarinet 2

Slow  $\text{♩} = 60$

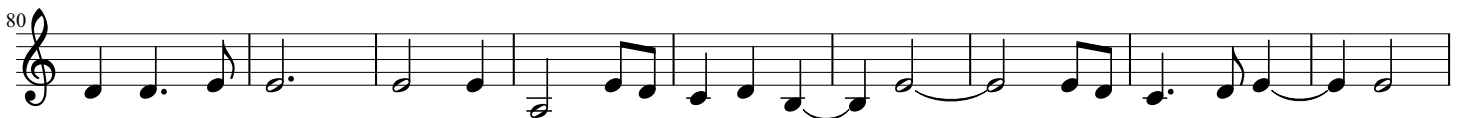


**A**



**B** Lively  $\text{♩} = 200$

12





# Le Bourgeois Gentilhomme

## Ouverture

Jean-Baptiste Lully (1632-1687)

Arranged by Jane Thomas & Catherine Shackell

### Bass Clarinet

Slow  $\text{♩} = 60$



**B** Lively  $\text{♩} = 200$

14



# Le Bourgeois Gentlehomme

## Ouverture

Jean-Baptiste Lully (1632-1687)

Arranged by Jane Thomas & Catherine Shackell

Bassoon

Slow  $\text{♩} = 60$



**B** Lively  $\text{♩} = 200$   
14



# Le Bourgeois Gentilhomme

## Ouverture

### Bass Clarinet from Bassoon

Jean-Baptiste Lully (1632-1687)  
Arranged by Jane Thomas & Catherine Shackell

Slow  $\text{♩} = 60$



# Le Bourgeois Gentilhomme

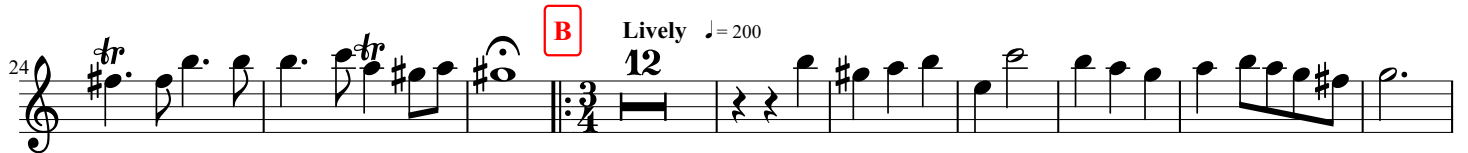
## Ouverture

Soprano Sax

Jean-Baptiste Lully (1632-1687)

Arranged by Jane Thomas & Catherine Shackell

Slow  $\text{♩} = 60$





# Le Bourgeois Gentilhomme

## Ouverture

Jean-Baptiste Lully (1632-1687)

Arranged by Jane Thomas & Catherine Shackell

### Horn

Slow ♩ = 60

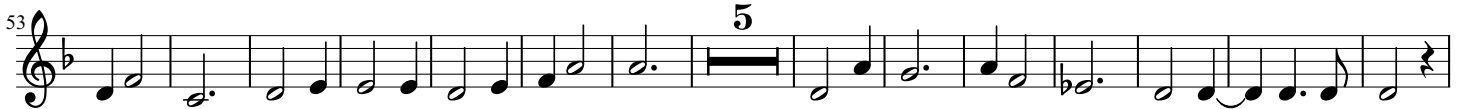
A



B

Lively ♩ = 200

16



# Le Bourgeois Gentilhomme

## Ouverture

Jean-Baptiste Lully (1632-1687)

Arranged by Jane Thomas & Catherine Shackell

### Trumpet

Slow  $\text{♩} = 60$



**A**



**B**

Lively  $\text{♩} = 200$

15



# Le Bourgeois Gentilhomme

## Ouverture

Jean-Baptiste Lully (1632-1687)

Arranged by Jane Thomas & Catherine Shackell

### Trombone

Slow  $\text{♩} = 60$





# Le Bourgeois Gentlehomme

## Ouverture

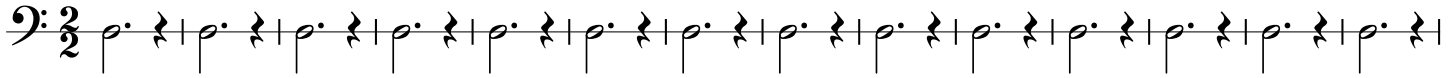
Jean-Baptiste Lully (1632-1687)

Arranged by Jane Thomas & Catherine Shackell

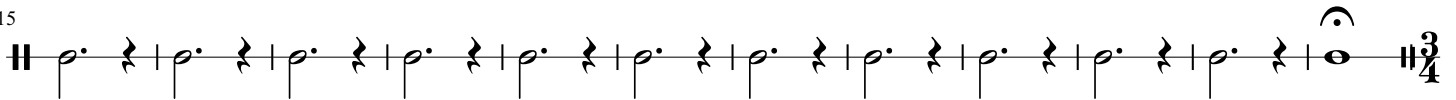
### Bass Drum

Slow  $\text{♩} = 60$

**A**



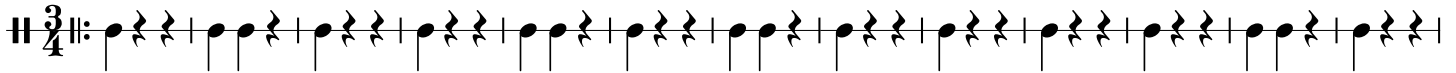
15



**B**

Lively  $\text{♩} = 200$

27



40



53



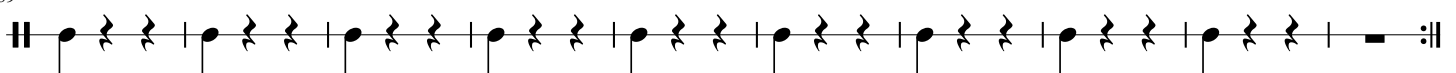
66



79



89



# Le Bourgeois Gentilhomme

## Ouverture

Jean-Baptiste Lully (1632-1687)

Arranged by Jane Thomas & Catherine Shackell

### Violins 1

Slow  $\text{♩} = 60$



# Le Bourgeois Gentilhomme

## Ouverture

Jean-Baptiste Lully (1632-1687)

Arranged by Jane Thomas & Catherine Shackell

### Violins 2

Slow  $\text{♩} = 60$



# Le Bourgeois Gentilhomme

## Ouverture

Jean-Baptiste Lully (1632-1687)

Arranged by Jane Thomas & Catherine Shackell

Viola

Slow  $\text{♩} = 60$



A



B

Lively  $\text{♩} = 200$

8



# Le Bourgeois Gentilhomme

## Ouverture

Cello

Jean-Baptiste Lully (1632-1687)

Arranged by Jane Thomas & Catherine Shackell

Slow  $\text{♩} = 60$



**B**

Lively  $\text{♩} = 200$

12

