

Ouverture FaWV K:C1

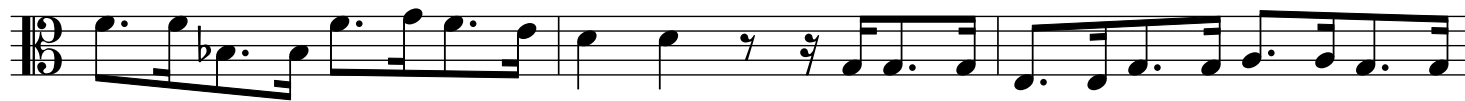
Viola

J. F. Fasch (1688-1758)

[1.] Ouverture



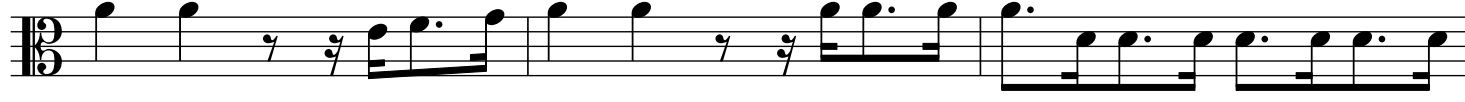
4



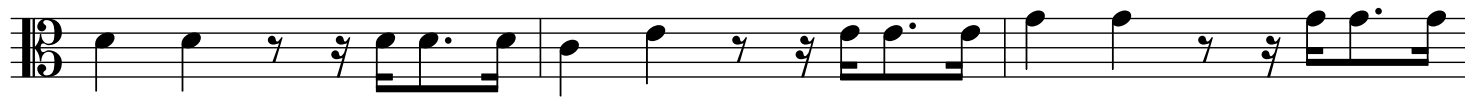
7



10



13



16



19



27



31



35



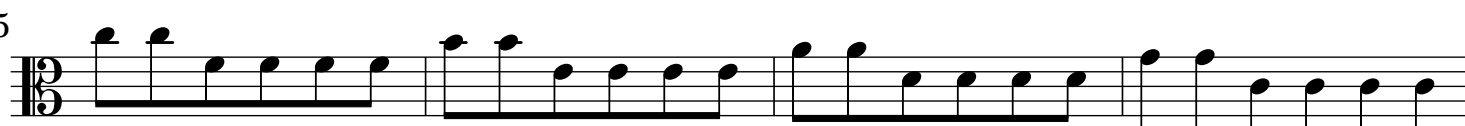
39



42



45



49

55

p

73

78

83

87

91

95

101

105

121

125

129

Detailed description: This image shows a page of musical notation for the Viola part of an Overture. The score is written in treble clef with a key signature of one sharp (F#) and a 3/4 time signature. The page contains 12 staves of music, with measure numbers 49, 55, 73, 78, 83, 87, 91, 95, 101, 105, 121, 125, and 129 marked at the beginning of their respective staves. The notation includes various rhythmic values, accidentals (sharps), and dynamic markings. A piano (*p*) dynamic is indicated at measure 55. Rehearsal marks with numbers 2, 13, and 12 are placed above the staves at measures 50, 56, and 106 respectively. The music features a mix of eighth and sixteenth notes, often beamed together, and rests.

133



137



144



149



155



159



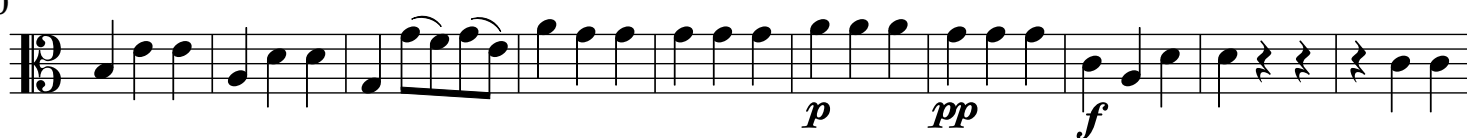
163



[2.] Air un poc[o] Allegro



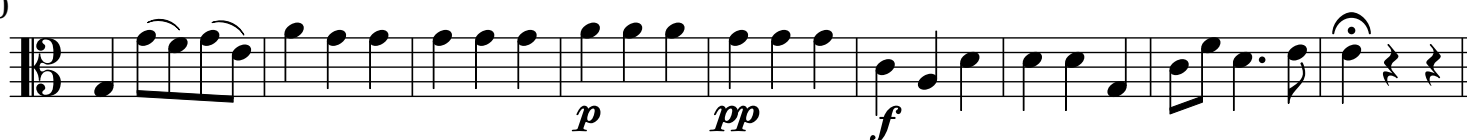
10



20



30



39



55



[3.] Bourée I alternativ

9 *p*

17 *f*

32 *p* *f* *p*

40 *f* *p* *7* *D.S.*

[4.] Bourée 2

6 *p*

11 *f*

22 *p* *f*

28 *p* *f*

33 *p* *D.S. Bourée 1 D.C.*

[5.] Air Andante



7



20



[6.] Aria un poco Allegro



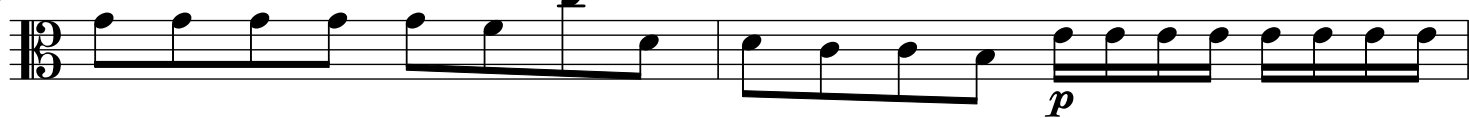
3



5



7



9



11



13



16



19



21

23

33

36

38 *Finis* 10 D.C.

[7.] Passepied

8

15 *p* *f* 1. 2.

21

29

37 7

51

58 *p* *f*