

Overture to "Etoile du Nord"

G. Meyerbeer

Tempo di marcia maestosa (metronome de Maelzel: ♩ = 80)

The musical score for the Piccolo part of the Overture to "Etoile du Nord" by G. Meyerbeer is written in C major and 2/4 time. The tempo is marked "Tempo di marcia maestosa (metronome de Maelzel: ♩ = 80)". The score consists of 39 measures, divided into sections marked A through G.

- Section A:** Measures 1-4. Measure 1 is a whole rest. Measures 2-4 are marked with a "5" above the staff, indicating a five-measure rest.
- Section B:** Measures 5-8. Measure 5 is a whole rest. Measures 6-8 are marked with an "8" above the staff, indicating an eight-measure rest.
- Section C:** Measures 9-16. Measure 9 is a whole rest. Measures 10-16 contain a series of eighth and sixteenth notes, with a *ff* dynamic marking at measure 10.
- Section D:** Measures 17-24. Measures 17-24 continue the melodic line with eighth and sixteenth notes.
- Section E:** Measures 25-27. Measures 25-27 continue the melodic line with eighth and sixteenth notes.
- Section F:** Measures 28-31. Measure 28 is a whole rest. Measures 29-31 are marked with a "3" above the staff, indicating a three-measure rest.
- Section G:** Measures 32-39. Measures 32-39 contain a series of eighth and sixteenth notes, with a *molto cresc.* dynamic marking at measure 32 and a *ff* dynamic marking at measure 34.

There are elements to this part and the flute part which make me wonder -- for instance the range -- whether it's really a "piccolo" part or perhaps to be played on the standard flute. And the "flute part" could be played on a piccolo at concert pitch. It seems to go too high for the flute! And the other strangeness is doubling the oboe on the piccolo during the C major section, a very cantabile section! [This theme, the "Romantic" theme of the opera, was taken in a somewhat altered form by G. Verdi for Forza.]

Pressez un peu (♩ = 88)

H

I

J

K

L

M

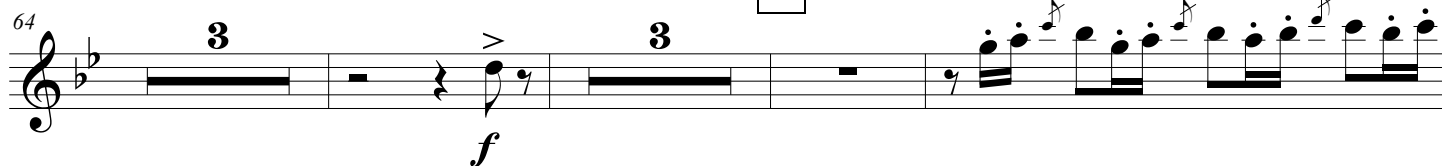
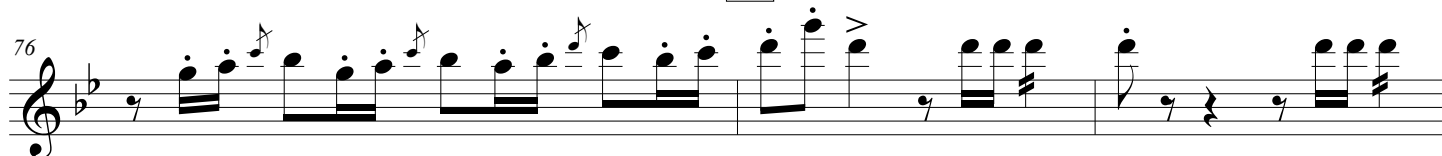
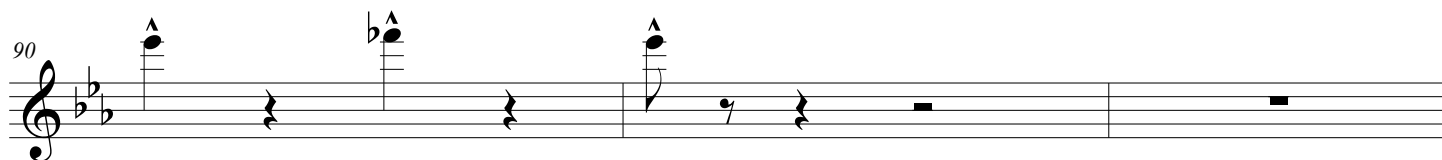
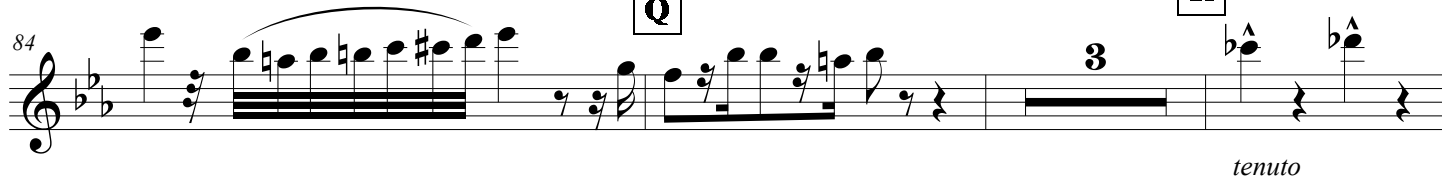
ff

légèrement et détaché

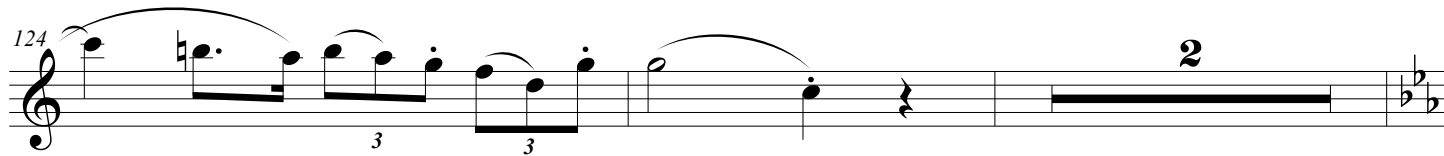
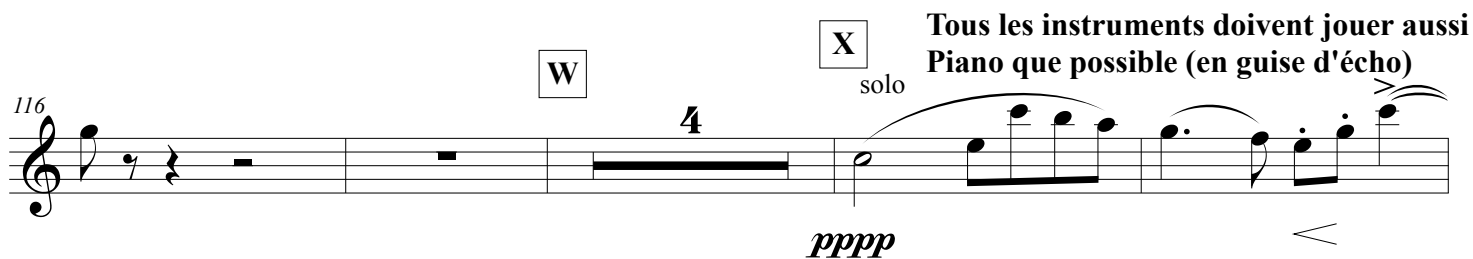
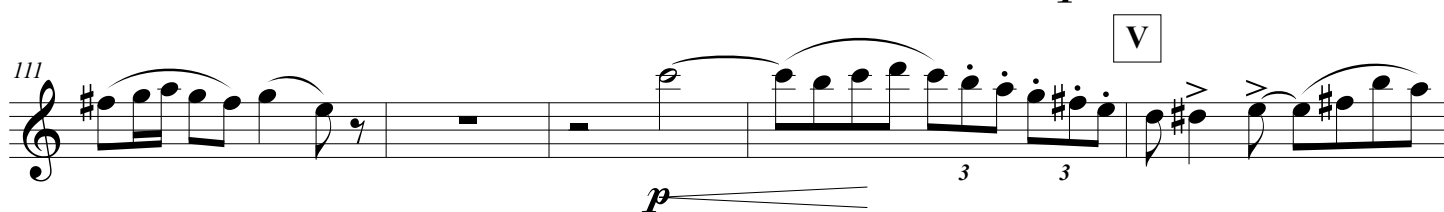
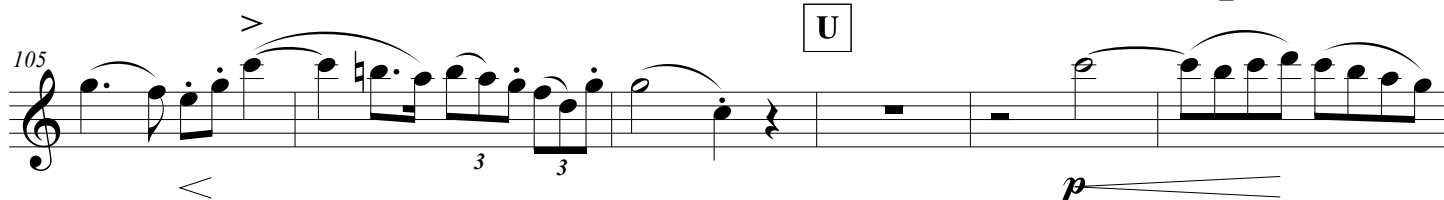
p

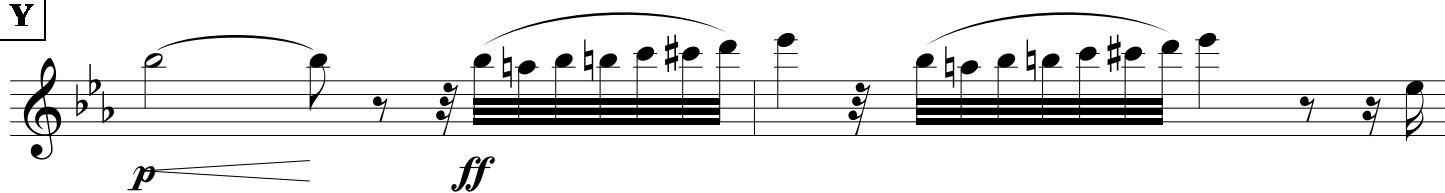
N

légèrement et détaché

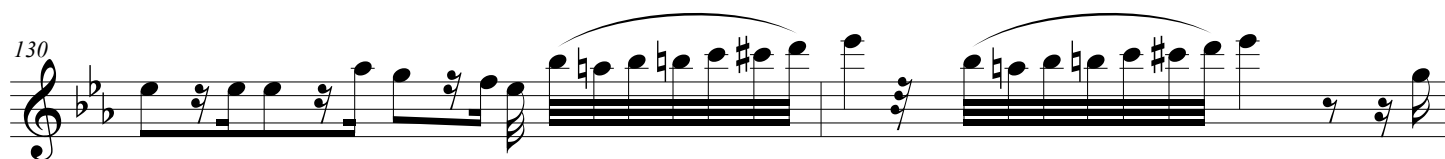
**O****P****Q****R**

S



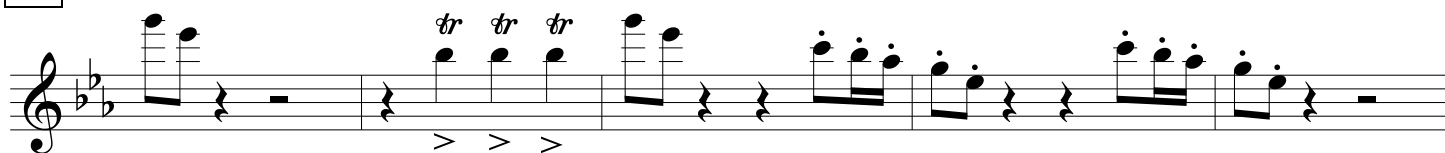
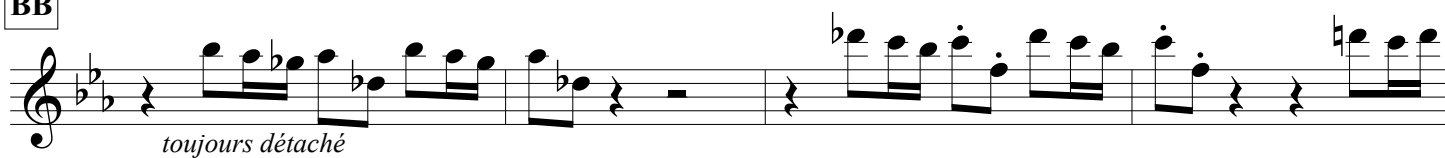
Y

130

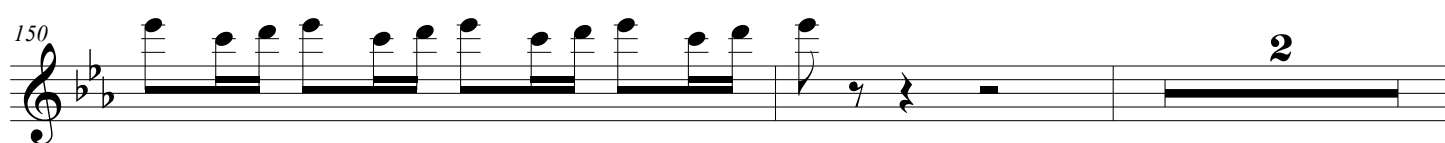
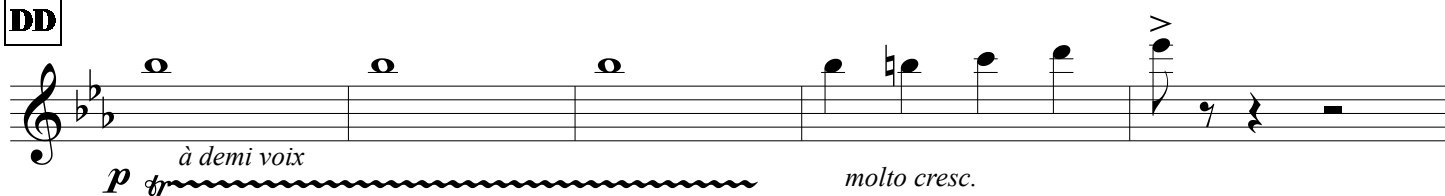


Pressez un peu (♩ = 104)

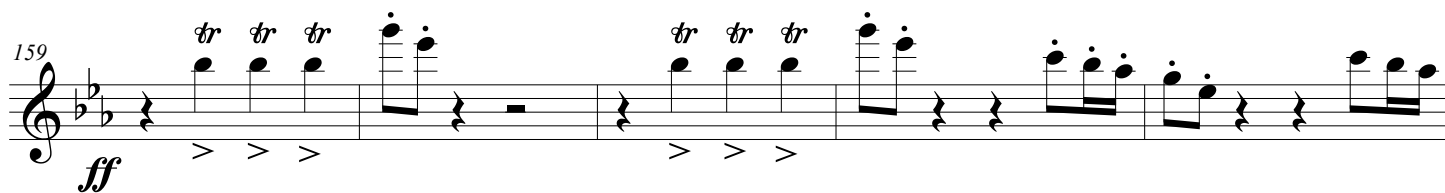
132

**AA****BB****CC**

150

**DD**

159

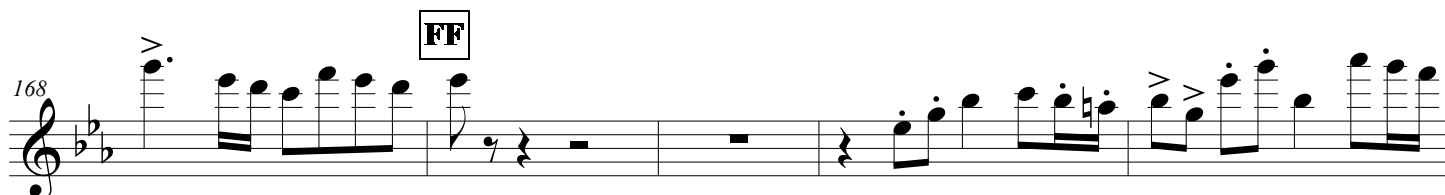


ff

EE



168



FF

GG

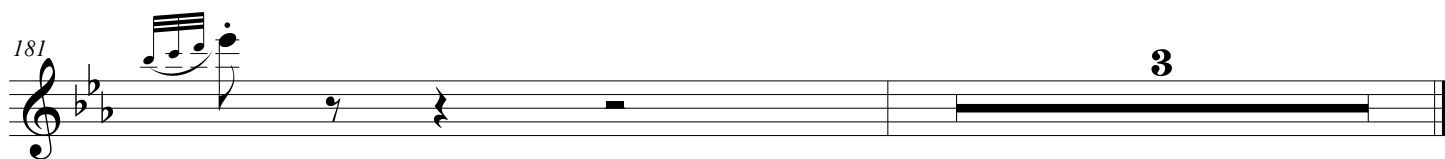


HH

178



181



3