

PRELUDE in D MAJOR

(from: *Admeto, Act I, Scena 6, HWV 22*)

for Piccolo Trumpet in A and Organ

Score (02':26)

Georg Friedrich Händel (1685 - 1759)

Arr. Michel Rondeau

Allegro ♩ = 100

Trumpet in C

Organ

This system contains the first four measures of the score. The Trumpet in C part is shown in a single staff with a whole rest in each measure. The Organ part is shown in two staves (treble and bass clef). The key signature is D major (two sharps) and the time signature is common time (C). The organ part features a rhythmic pattern of eighth and sixteenth notes.

C Tpt.

Org.

This system contains measures 5 through 8. The C Tpt. part is shown in a single staff with whole rests. The Organ part continues with its rhythmic accompaniment in two staves.

C Tpt.

Org.

This system contains measures 9 through 13. The C Tpt. part begins to play in measure 9. The Organ part continues with its rhythmic accompaniment in two staves.

C Tpt.

Org.

This system contains measures 14 through 17. The C Tpt. part continues its melodic line. The Organ part continues with its rhythmic accompaniment in two staves.

PRELUDE in D MAJOR - HWV 22 - Händel - Score

2
19

C Tpt.

Org.

23

C Tpt.

Org.

27

C Tpt.

Org.

32

C Tpt.

Org.

PRELUDE in D MAJOR - HWV 22 - Händel - Score

3

C Tpt.

Org.

37

C Tpt.

Org.

41

C Tpt.

Org.

46

C Tpt.

Org.

51

PRELUDE in D MAJOR - HWV 22 - Händel - Score

55

C Tpt.

Org.

Detailed description: This system covers measures 55, 56, and 57. The C Tpt. part has rests in measures 55 and 56, followed by a quarter note G4 in measure 57. The Organ part features a rhythmic accompaniment with eighth notes in the bass and chords in the treble. Measure 55 has a quarter rest in the bass and a quarter note G4 in the treble. Measure 56 has a quarter rest in the bass and a quarter note G4 in the treble. Measure 57 has a quarter note G4 in the bass and a quarter note G4 in the treble.

58

C Tpt.

Org.

Detailed description: This system covers measures 58, 59, and 60. The C Tpt. part has a melodic line of eighth notes in measure 58, a quarter note G4 in measure 59, and a quarter note G4 with a trill (tr) in measure 60. The Organ part continues the accompaniment. Measure 58 has a quarter rest in the bass and a quarter note G4 in the treble. Measure 59 has a quarter rest in the bass and a quarter note G4 in the treble. Measure 60 has a quarter note G4 in the bass and a quarter note G4 in the treble.

PRELUDE in D MAJOR

(from: *Admeto, Act I, Scena 6, HWV 22*)
for Piccolo Trumpet in A and Organ

Trumpet in A

Georg Friedrich Händel (1685 - 1759)

Arr. Michel Rondeau

Allegro $\text{♩} = 100$
12



PRELUDE in D MAJOR

(from: *Admeto, Act I, Scena 6, HWV 22*)

for Piccolo Trumpet in A and Organ

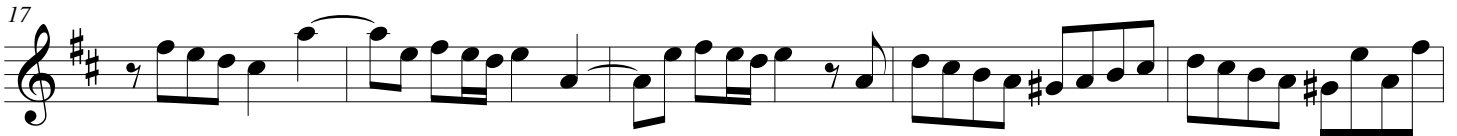
Trumpet in C

Georg Friedrich Händel (1685 - 1759)

Arr. Michel Rondeau

Allegro ♩ = 100

12



PRELUDE in D MAJOR

(from: *Admeto, Act I, Scena 6, HWV 22*)

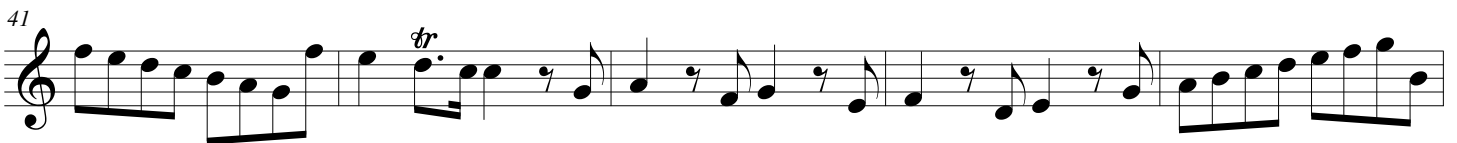
for Piccolo Trumpet in A and Organ

Trumpet in D

Georg Friedrich Händel (1685 - 1759)

Arr. Michel Rondeau

Allegro $\text{♩} = 100$
12



PRELUDE in D MAJOR

(from: *Admeto, Act I, Scena 6, HWV 22*)

for Piccolo Trumpet in A and Organ

Georg Friedrich Händel (1685 - 1759)

Arr. Michel Rondeau

Organ

Trumpet in C

Allegro ♩ = 100

Organ

C Tpt.

Org.

5

C Tpt.

Org.

9

C Tpt.

Org.

14

PRELUDE in D MAJOR - HWV 22 - Händel - Organ

2
19

C Tpt.

Org.

23

C Tpt.

Org.

27

C Tpt.

Org.

32

C Tpt.

Org.

PRELUDE in D MAJOR - HWV 22 - Händel - Organ

3

C Tpt.

Org.

37

C Tpt.

Org.

41

C Tpt.

Org.

46

C Tpt.

Org.

51

PRELUDE in D MAJOR - HWV 22 - Händel - Organ

C Tpt.

55

Org.

Detailed description: This system covers measures 55, 56, and 57. The C Tpt. part (top staff) has rests in measures 55 and 56, followed by a quarter note G4 in measure 57. The Organ part (bottom two staves) features a rhythmic accompaniment of eighth notes in the bass and chords in the treble. Measure 55 has a quarter rest in the bass and a quarter note G4 in the treble. Measure 56 has a quarter rest in the bass and a quarter note G4 in the treble. Measure 57 has a quarter note G4 in the bass and a quarter note G4 in the treble.

C Tpt.

58

Org.

Detailed description: This system covers measures 58, 59, and 60. The C Tpt. part (top staff) plays a continuous eighth-note line in measures 58 and 59, ending with a quarter note G4 and a trill (tr) on G4 in measure 60. The Organ part (bottom two staves) continues the accompaniment. Measure 58 has a quarter rest in the bass and a quarter note G4 in the treble. Measure 59 has a quarter rest in the bass and a quarter note G4 in the treble. Measure 60 has a quarter note G4 in the bass and a quarter note G4 in the treble.