

W i l d n e l l d.

# Sonatine 3.

Allegretto.

The first section of the piece, titled "Allegretto", is written in bass clef with a 2/4 time signature. It consists of six staves of music. The notation includes various rhythmic values such as eighth and sixteenth notes, as well as rests. There are some markings above the notes, possibly indicating fingerings or ornaments. The music concludes with a double bar line.

Menuetto.

The second section, titled "Menuetto", is written in bass clef with a 3/4 time signature. It consists of two staves of music. The notation features a mix of quarter and eighth notes, with some longer note values. The piece ends with a double bar line.

Trio.

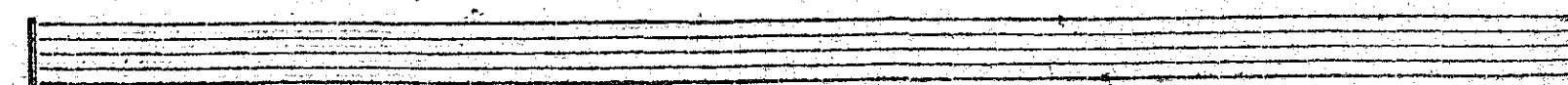
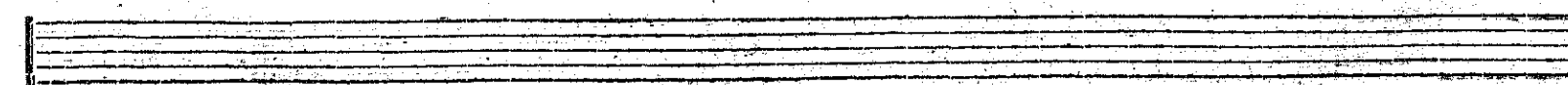
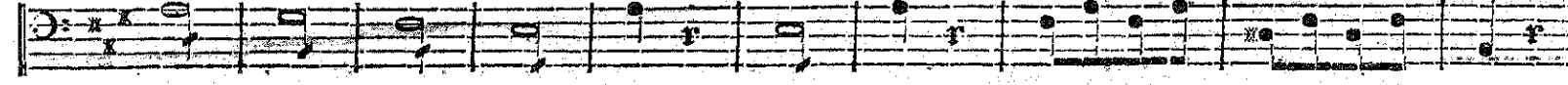
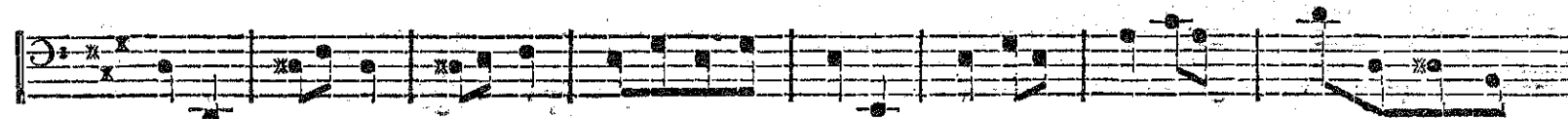
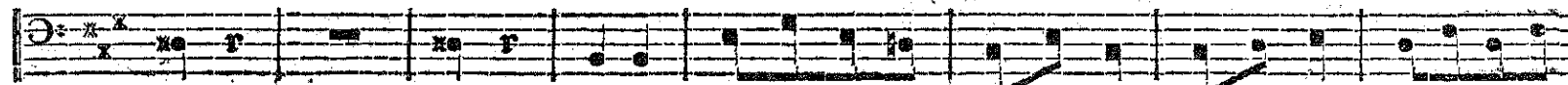
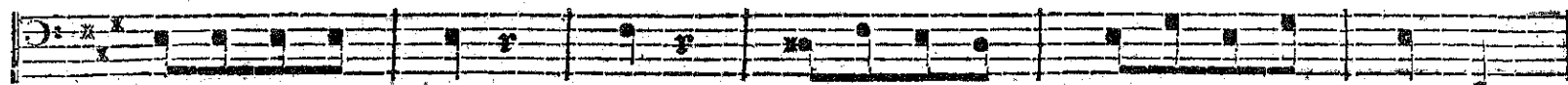
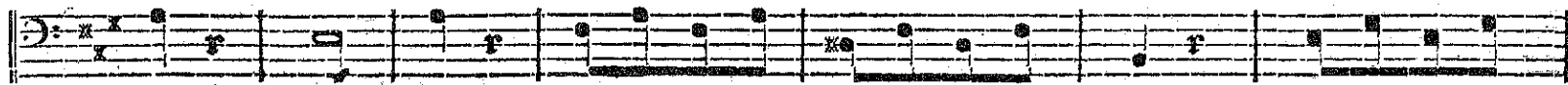
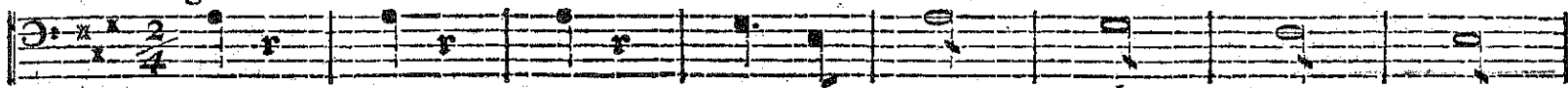
The third section, titled "Trio", is written in bass clef with a 3/4 time signature. It consists of three staves of music. The notation includes quarter and eighth notes, with some rests. The section concludes with a double bar line.

Da Capo Menuetto.

An empty musical staff is located at the bottom of the page, below the "Da Capo Menuetto" instruction.

# Sonata 5.

*Allegro moderato.*



Vivace.

This page contains 12 staves of musical notation for guitar. The music is written in a 3/4 time signature and a key signature of one sharp (F#). The notation includes various rhythmic values such as eighth and sixteenth notes, as well as rests. Fretting is indicated by 'x' marks above the notes. The piece is marked 'Vivace.' and concludes with a double bar line and repeat dots at the end of the final staff.

# Sonata 6.

Allegretto.

The musical score for Sonata 6, page 5, is presented in a single system of ten staves. The first nine staves contain musical notation, while the tenth staff is empty. The notation is written in a single system, with a treble clef, a key signature of one sharp (F#), and a 2/4 time signature. The music consists of a single melodic line with various rhythmic patterns, including eighth and sixteenth notes, and rests. There is a large ink smudge on the second staff.

Allegro moderato.

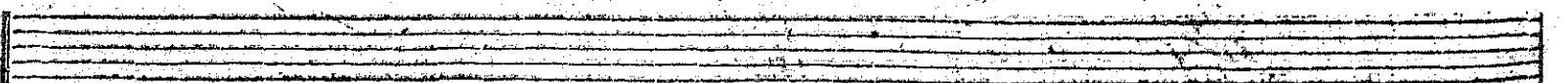
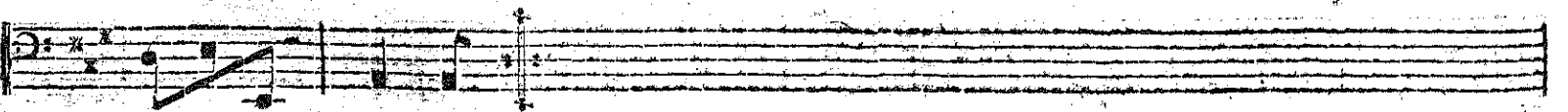
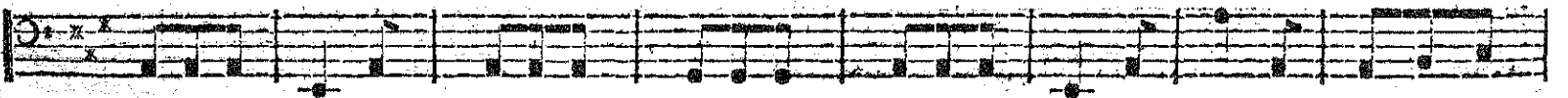
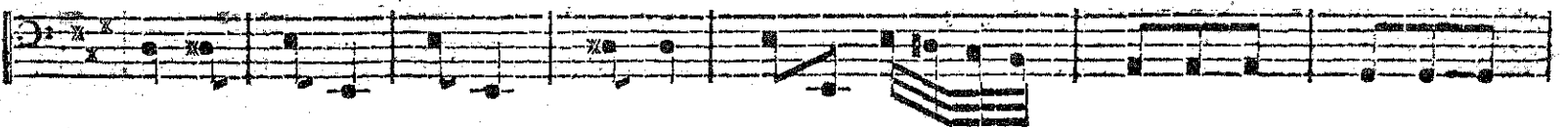
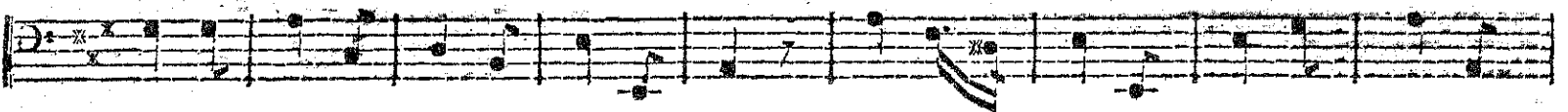
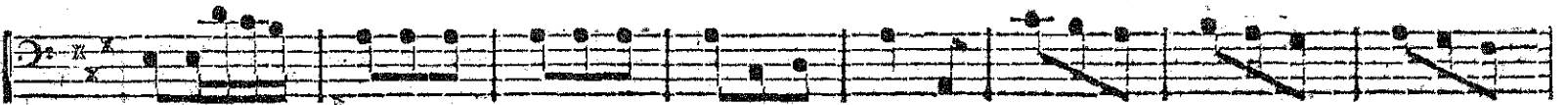
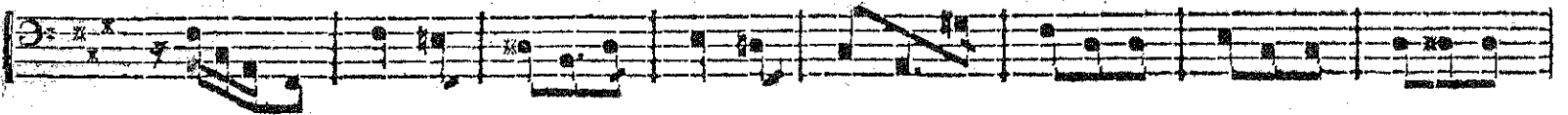
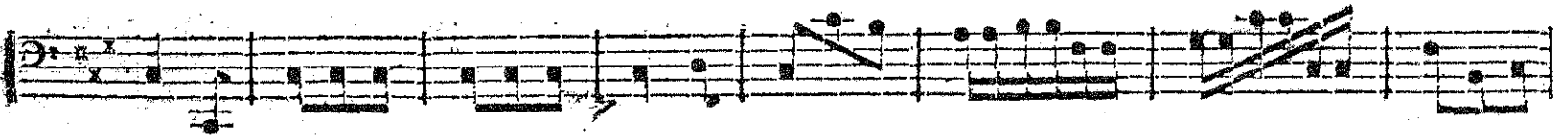
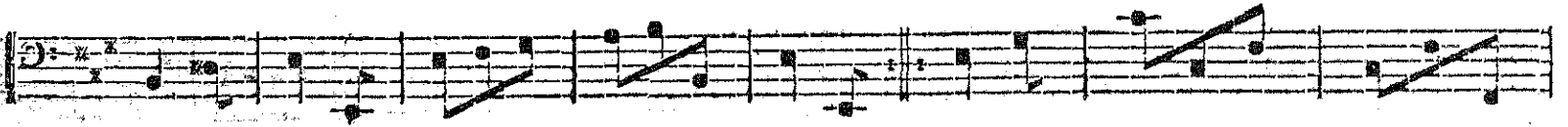
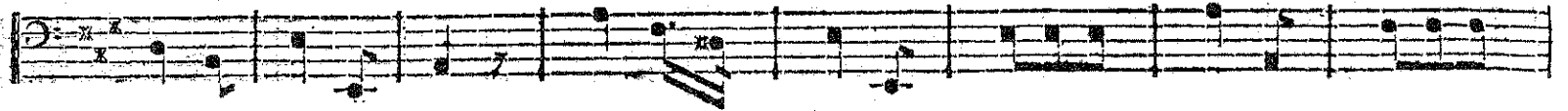
This page of musical notation consists of 12 staves of music. The key signature is one sharp (F#) and the time signature is 6/8. The tempo is marked 'Allegro moderato.' The notation includes various rhythmic values such as eighth and sixteenth notes, rests, and slurs. Fingering numbers, specifically the number '7', are placed below several notes. The music is written in a single system across the 12 staves.

# Sonata 7.

Allegretto moderato.

This image shows a page of musical notation for Sonata 7, marked 'Allegretto moderato'. The score is written on 12 staves, each beginning with a treble clef, a key signature of one sharp (F#), and a time signature of 2/4. The notation includes various rhythmic values such as eighth and sixteenth notes, rests, and dynamic markings like 'f' (forte) and 'p' (piano). There are also some performance instructions, such as 'x' marks on the first few notes of each staff, which likely indicate where to place the fingers. The music is presented in a single system across the page.

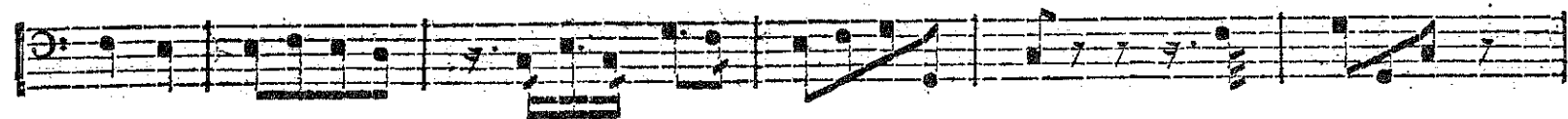
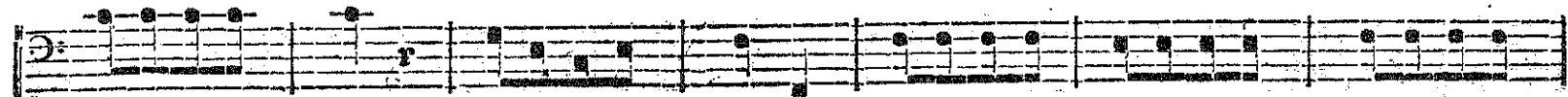
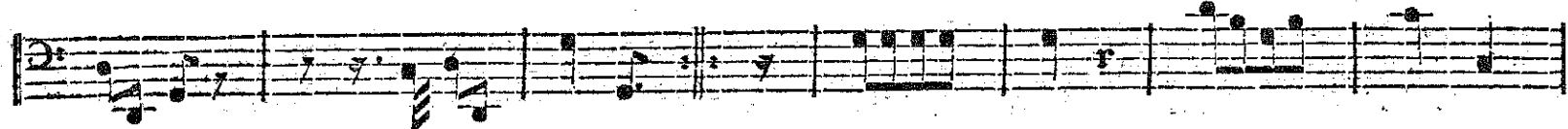
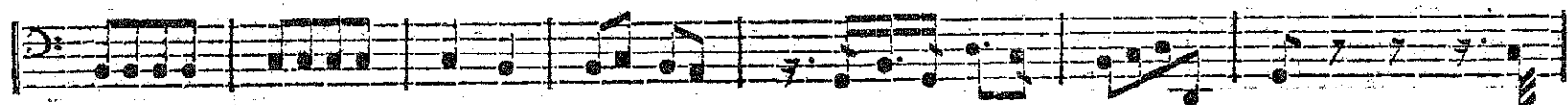
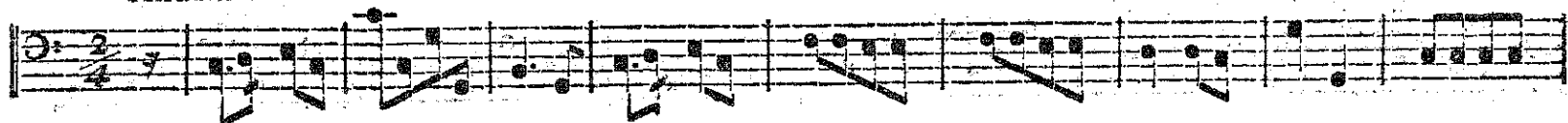
Vivace moderato.



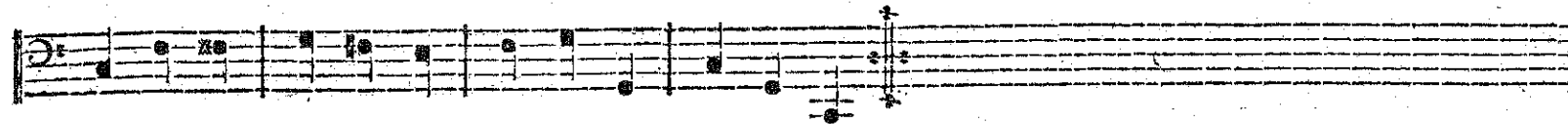
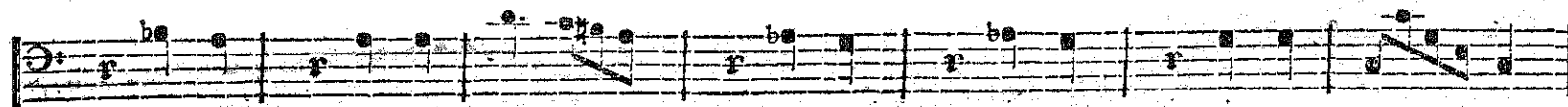
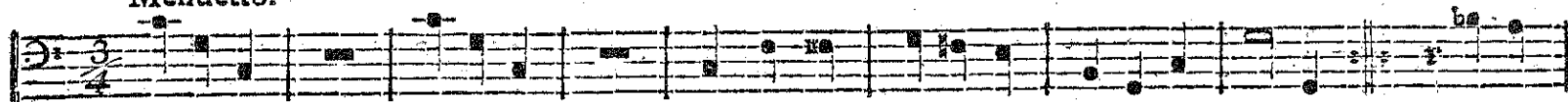


# Sonatine 4.

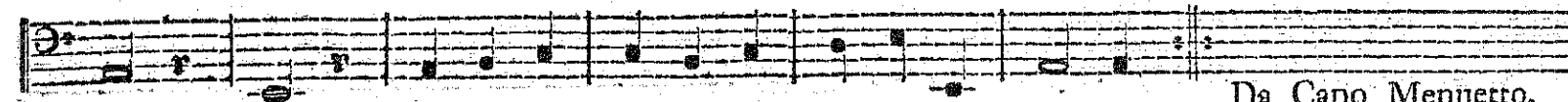
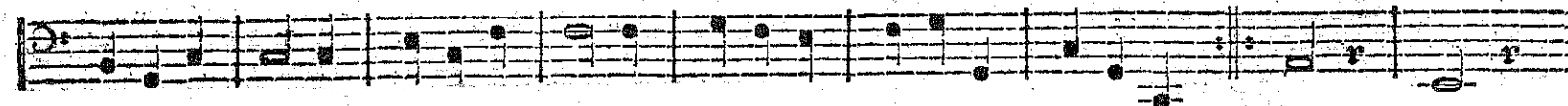
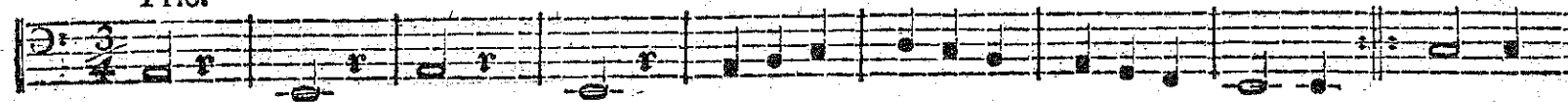
Andante.



Menuetto.



Trio.



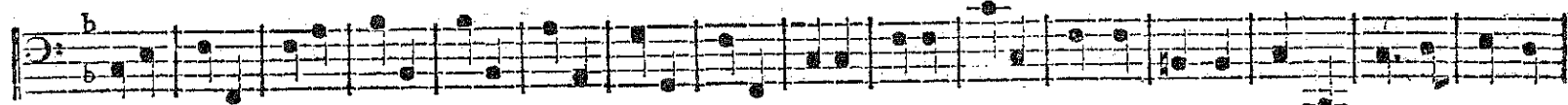
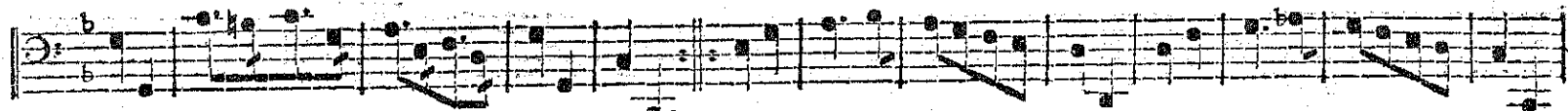
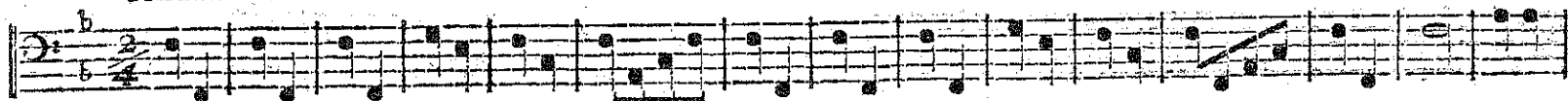
Da Capo Menuetto.

# Sonata 8.

Allegro moderato.

This page contains the musical score for Sonata 8, page 10. The music is written in bass clef with a key signature of one flat (B-flat major or F minor). The tempo is marked 'Allegro moderato'. The score consists of 12 staves of music. The first staff begins with a treble clef and a 7/8 time signature. The music features a variety of rhythmic patterns, including eighth and sixteenth notes, and rests. There are several dynamic markings, such as 'r' (ritardando) and 'f' (forte). The piece concludes with a double bar line and repeat dots at the end of the twelfth staff.

Andante.



Allegretto.

