

Bassoon

音樂短劇-可怕的末日預言

Cheng-Shiun

序曲(Overture)

♩ = 68

4

f *mp*

8 *tr* 3

14

19 *tr* 2

25 2

31 2

36 *tr* // *f*

40 3

起始敘(Prologue)

46 **2**

mp

53

59

65 **2**

71 **6**

81 **2** **5**

91 **4**

98 **7**

第一幕(First Act)

110 **4**

mf

117

121

127

128

142

148

158

167

174

185

187 第二幕(Second Act)

mp

199

206

209

mp

223

239

mp

251

256 第三幕(Third Act)

mp

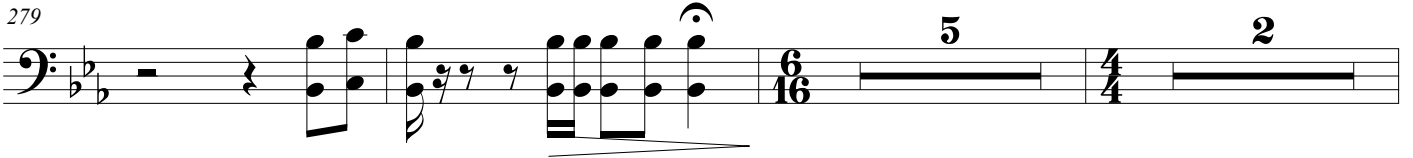
268



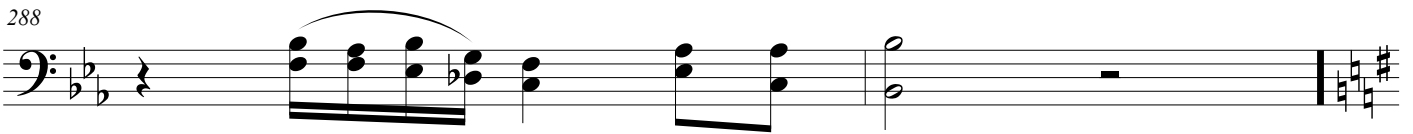
269



279



288



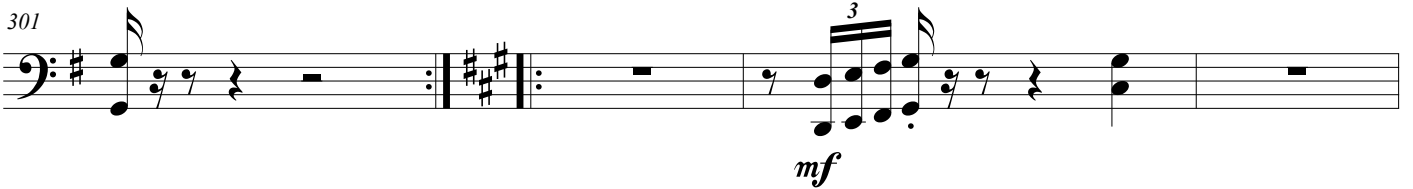
290



296



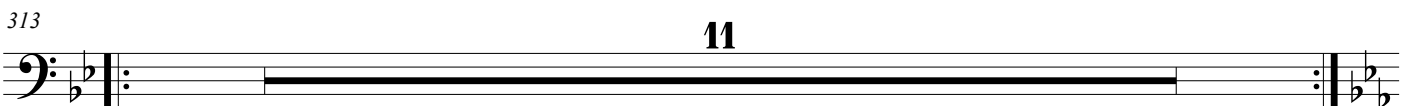
301



305



313



324

mp

332

1.

mp

335

mf

341

mf

347 第四幕(Fourth Act)

mp

356

mp

361

mp

368

mp

380

mf

第五幕(Fifth Act)

395

Musical notation for measure 395, featuring a bass clef, a key signature of two flats, and a 3-measure rest. The notation includes a dynamic marking of *mp* and a fermata over the final measure.

401

Musical notation for measure 401, featuring a bass clef, a key signature of two flats, and a series of eighth notes.

403

Musical notation for measure 403, featuring a bass clef, a key signature of two flats, and a 2-measure rest followed by a 5-measure rest.

第六幕(Sixth Act)

412

Musical notation for measure 412, featuring a bass clef, a key signature of two flats, and a series of eighth notes. The notation includes a dynamic marking of *mp*.

418

Musical notation for measure 418, featuring a bass clef, a key signature of two flats, and a 4-measure rest followed by a 2-measure rest.

427

Musical notation for measure 427, featuring a bass clef, a key signature of two flats, and a series of eighth notes. The notation includes a dynamic marking of *mf*.

432

Musical notation for measure 432, featuring a bass clef, a key signature of two flats, and a series of eighth notes.

435

Musical notation for measure 435, featuring a bass clef, a key signature of two flats, and a series of eighth notes.

438

Musical notation for measure 438, featuring a bass clef, a key signature of two flats, and a series of eighth notes with accents.

442

446

The image shows two staves of musical notation in bass clef with a key signature of two flats. The first staff, labeled 442, contains measures 442 through 445. It begins with a rest, followed by a series of chords and eighth notes. Dynamic markings include *mp* (measures 442-443), *cresc.* (measure 444), and *mf* (measure 445). The second staff, labeled 446, contains measures 446 through 449. It features a sequence of chords and eighth notes, ending with a final chord and a double bar line.