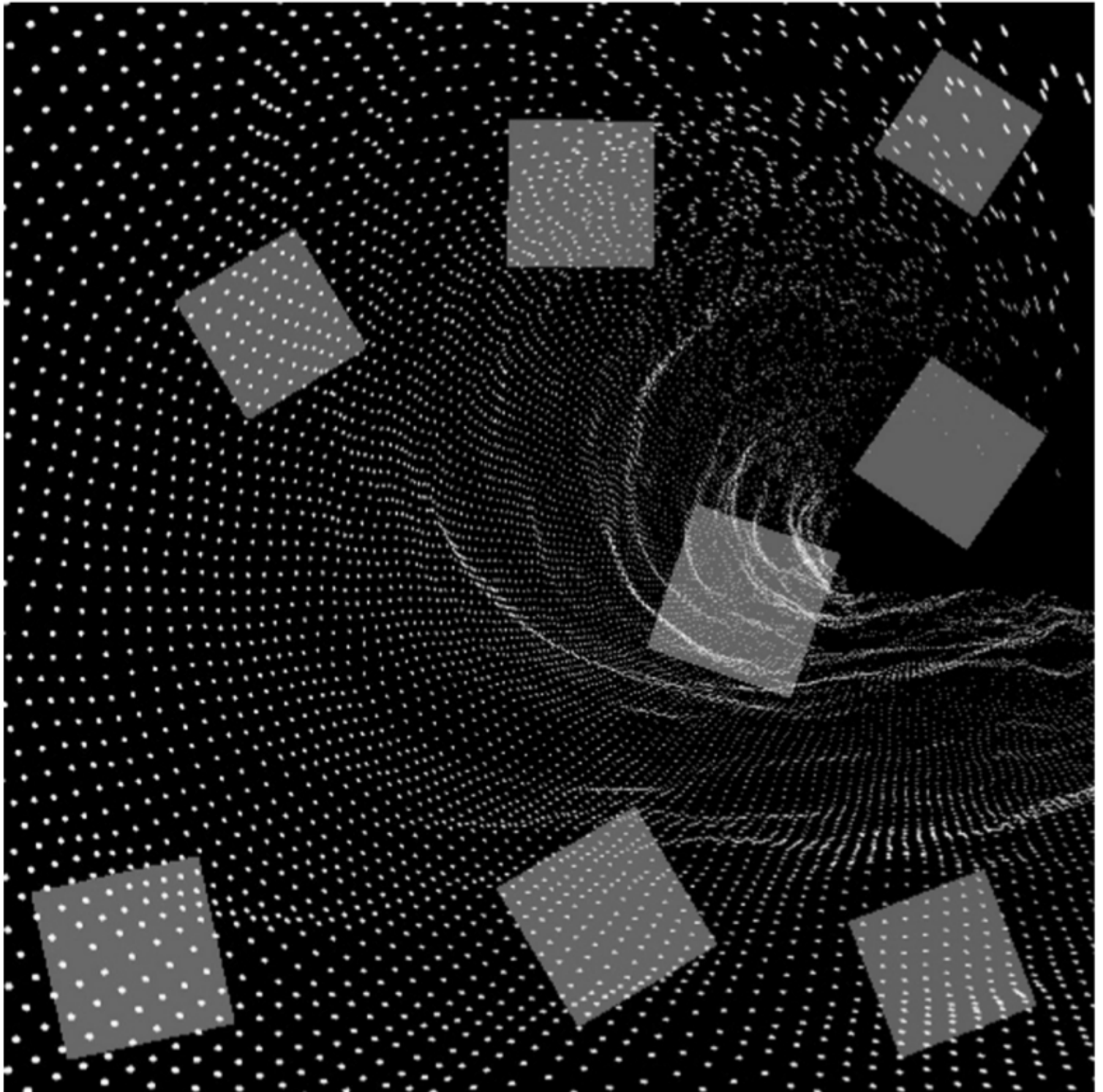


Andrea Antonello Nacci  
Concerto for Chromatic harmonica and Electronics  
The score  
Dedicated to David Kettlewell



Note:

- ) Perform the content of each square with each tempo of the "Concerto"
- ) Dots, lines , density and position are related to each region of the instrument
- \_) Performers are allowed to select squares/tempos each time differently