

PRELUDE in D MINOR

(from: 'Ach Gott un Herr', BuxWV 177)

for String Orchestra

Score (01':26")

Dietrich Buxtehude (1637 - 1707)

Arr. Michel Rondeau

1. Allegro ♩ = 120

Musical score for Violin I, Violin II, Viola, Cello, and Double Bass. The score is in common time (C) and D minor. The tempo is 1. Allegro with a quarter note equal to 120 beats per minute. The dynamics are marked *mf* (mezzo-forte). The Violin I part is mostly rests. Violin II, Viola, Cello, and Double Bass all play a rhythmic pattern of eighth notes.

Musical score for Violin I, Violin II, Viola, Cello, and Double Bass. The score is in common time (C) and D minor. The tempo is 1. Allegro with a quarter note equal to 120 beats per minute. The dynamics are marked *mf* (mezzo-forte). The Violin I part starts at measure 5 with a melodic line. Violin II continues with eighth notes. Viola, Cello, and Double Bass provide harmonic support with sustained notes.

PRELUDE in D MINOR - Bux 177 - Score

2
9

Vln. I

Vln. II

Vla.

Vc.

D.B.

13

Vln. I

Vln. II

Vla.

Vc.

D.B.

PRELUDE in D MINOR - Bux 177 - Score

17

Vln. I

Vln. II

Vla.

Vc.

D.B.

2. Allegro

22

Vln. I

Vln. II

Vla.

Vc.

D.B.

f

PRELUDE in D MINOR - Bux 177 - Score

4
25

Vln. I

Vln. II

Vla.

Vc.

D.B.

p *cresc.* *p* *cresc.* *p* *cresc.*

Detailed description: This system contains measures 25, 26, and 27. The first violin part (Vln. I) features a melodic line with sixteenth-note runs, starting in measure 25 and continuing through measure 27. The second violin (Vln. II) plays a simple harmonic accompaniment. The viola (Vla.) has a whole note in measure 25 and a half note in measure 27. The violin (Vc.) and double bass (D.B.) parts play a steady bass line of quarter notes. Dynamics include piano (*p*) and crescendo (*cresc.*) markings.

28

Vln. I

Vln. II

Vla.

Vc.

D.B.

mf *f* *mf* *mf* *mf*

Detailed description: This system contains measures 28, 29, 30, and 31. The first violin part (Vln. I) has a dynamic of mezzo-forte (*mf*) in measure 28, then a forte (*f*) dynamic for the rest of the system. The second violin (Vln. II) and viola (Vla.) parts continue with their accompaniment. The violin (Vc.) and double bass (D.B.) parts also continue with their bass line. Dynamics include mezzo-forte (*mf*) and forte (*f*).

PRELUDE in D MINOR - Bux 177 - Score

32

Vln. I

Vln. II

Vla.

Vc.

D.B.

35

Vln. I

Vln. II

Vla.

Vc.

D.B.

This musical score page contains two systems of music for a string ensemble. The first system covers measures 32 to 34, and the second system covers measures 35 to 37. The instruments are Violin I, Violin II, Viola, Violoncello, and Double Bass. The key signature is D minor, and the time signature is 3/4. In measure 32, the Violin I part has a melodic line with slurs and a dynamic marking of *f*. The Violin II part has a whole note chord with a dynamic marking of *mf*. The Viola, Violoncello, and Double Bass parts have whole notes with a dynamic marking of *mf*. In measure 33, the Violin I part continues with a melodic line, and the other instruments have whole notes with a dynamic marking of *f*. In measure 34, the Violin I part has a whole note chord, and the other instruments have whole notes with a dynamic marking of *f*. In measure 35, the Violin I part has a melodic line with slurs, and the other instruments have whole notes. In measure 36, the Violin I part has a melodic line with slurs, and the other instruments have whole notes. In measure 37, the Violin I part has a whole note chord, and the other instruments have whole notes.

PRELUDE in D MINOR - Bux 177 - Score

6
38

Vln. I

Vln. II

Vla.

Vc.

D.B.

41

Vln. I

Vln. II

Vla.

Vc.

D.B.

rit.

PRELUDE in D MINOR

(from: 'Ach Gott un Herr', BuxWV 177)

for String Orchestra

Violin I

Dietrich Buxtehude (1637 - 1707)

Arr. Michel Rondeau

1. Allegro ♩ = 120

5

mf

10

15

21

2. Allegro

f

25

p *cresc.* *mf*

29

32

36

40

rit.

PRELUDE in D MINOR

(from: 'Ach Gott un Herr', BuxWV 177)

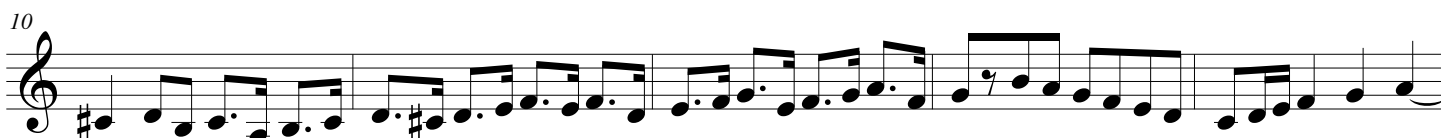
for String Orchestra

Violin II

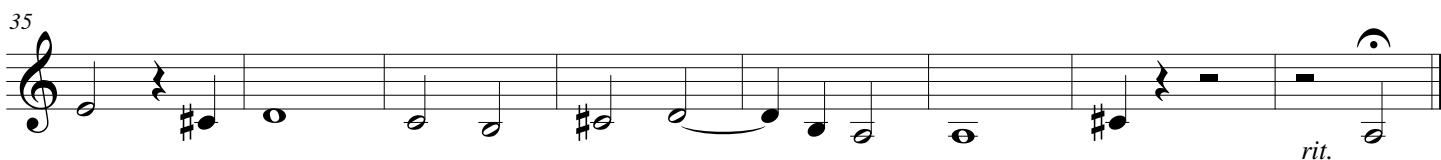
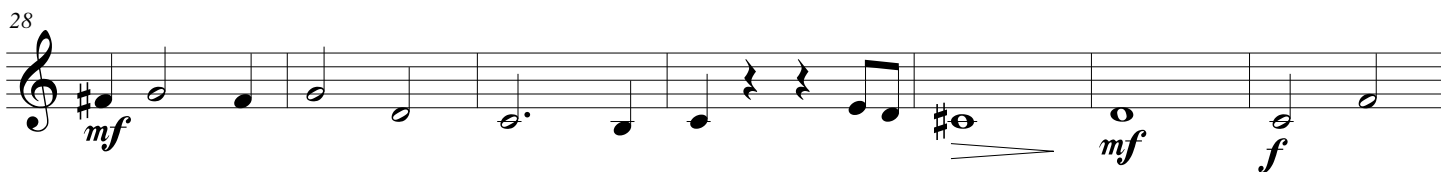
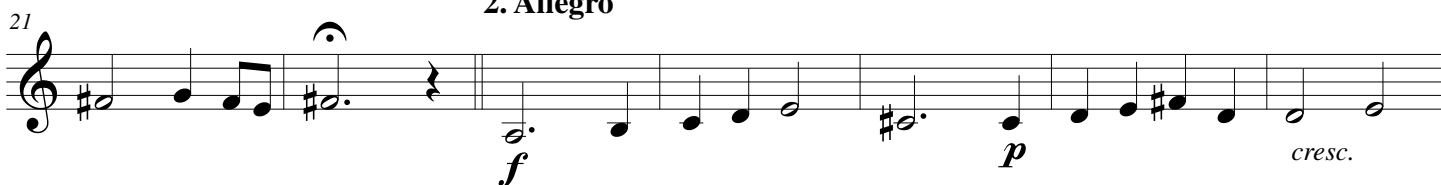
Dietrich Buxtehude (1637 - 1707)

Arr. Michel Rondeau

1. Allegro ♩ = 120



2. Allegro



PRELUDE in D MINOR

(from: 'Ach Gott un Herr', BuxWV 177)

for String Orchestra

Viola

Dietrich Buxtehude (1637 - 1707)

Arr. Michel Rondeau

1. Allegro ♩ = 120

Musical notation for measures 1-6 of the first movement. The key signature is D minor (two flats) and the time signature is common time (C). The music begins with a rest, followed by a series of eighth and quarter notes. A dynamic marking of *mf* is placed below the first measure.

7

Musical notation for measures 7-14 of the first movement. The music continues with a mix of quarter and eighth notes, ending with a half note.

15

Musical notation for measures 15-22 of the first movement. The music features a melodic line with a fermata over the final note of the phrase.

2. Allegro

23

Musical notation for measures 23-29 of the second movement. The music starts with a dynamic marking of *f*, followed by a section marked *p cresc. mf*.

30

Musical notation for measures 30-36 of the second movement. The music features a dynamic marking of *mf* followed by *f*, with hairpins indicating the change.

37

Musical notation for measures 37-42 of the second movement. The music concludes with a dynamic marking of *rit.* and a fermata over the final note.

PRELUDE in D MINOR

(from: 'Ach Gott un Herr', BuxWV 177)

for String Orchestra

Cello

Dietrich Buxtehude (1637 - 1707)

Arr. Michel Rondeau

1. Allegro ♩ = 120

mf

8

2

16

2. Allegro

23

f *p* *cresc.* *mf*

30

mf *f*

37

rit.

PRELUDE in D MINOR

(from: 'Ach Gott un Herr', BuxWV 177)

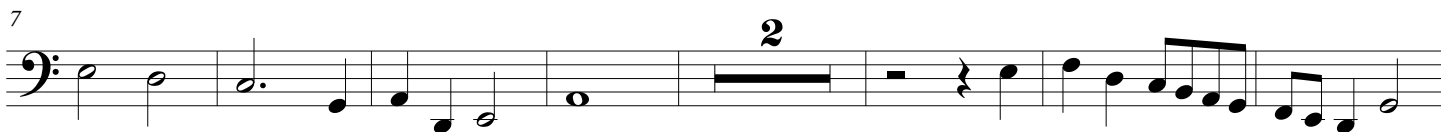
for String Orchestra

Double Bass

Dietrich Buxtehude (1637 - 1707)

Arr. Michel Rondeau

1. Allegro ♩ = 120



2. Allegro

