

PRELUDE in A MAJOR

(from: *Missa in te Domine Speravi, Benedictus and Osanna*)

for Oboe and Harpsichord

Score (01':45'')

Giovanni Francesco Anerio (1567 - 1630)

Arr. Michel Rondeau

1. Moderato ♩ = 90

The score is arranged in three systems, each with an Oboe (Ob.) staff and a Harpsichord (Hpschd.) grand staff (treble and bass clefs). The key signature is three sharps (F#, C#, G#) and the time signature is common time (C). The tempo is marked '1. Moderato' with a quarter note equal to 90 beats per minute. The score includes various musical notations such as slurs, trills (tr), and rests. Measure numbers 6, 11, and 16 are indicated at the beginning of their respective systems.

PRELUDE in A MAJOR - Anerio - Score

Ob. 22

Hpschd. 22

2. Allegretto

Ob. 27

Hpschd. 27

Ob. 32

Hpschd. 32

Ob. 36

Hpschd. 36

PRELUDE in A MAJOR

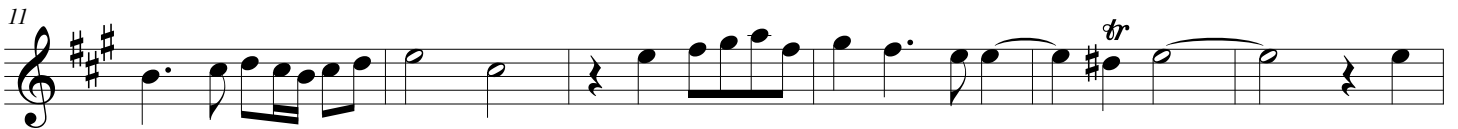
(from: *Missa in te Domine Speravi, Benedictus and Osanna*)
for Oboe and Harpsichord

Oboe

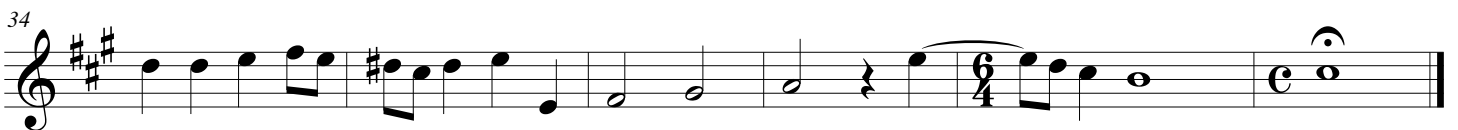
Giovanni Francesco Anerio (1567 - 1630)

Arr. Michel Rondeau

1. Moderato ♩ = 90



2. Allegretto



PRELUDE in A MAJOR

(from: *Missa in te Domine Speravi, Benedictus and Osanna*)
for Oboe and Harpsichord

Giovanni Francesco Anerio (1567 - 1630)

Arr. Michel Rondeau

Harpsichord

Oboe

1. Moderato ♩ = 90

Harpsichord

Ob.

Hpschd.

Ob.

Hpschd.

Ob.

Hpschd.

PRELUDE in A MAJOR - Anerio - Harpsichord

Ob. ²²

Hpschd. ²²

Ob. ²⁷

Hpschd. ²⁷ **2. Allegretto**

Ob. ³²

Hpschd. ³² *tr*

Ob. ³⁶

Hpschd. ³⁶