

José Miguel Moreno Sabio

***Tres movimientos litúrgicos
para trompeta y órgano***

Partitura

**A partir de tres piezas contenidas en
“Missa brevis in festo Corporis Christi”**

ÍNDICE

I.	Maestoso e tenuto ¹	Pág. 1
II.	Calmo ²	Pág. 6
III.	Allegro molto e con giubilo ³	Pág. 10

Duración aprox. 7' 30"

¹ A partir de VI – *Communio* de “Missa brevis in festo Corporis Christi” (2013)

² A partir de III – *Offertorium* de “Missa brevis in festo Corporis Christi” (2013)

³ A partir de VII – *Postcommunio* de “Missa brevis in festo Corporis Christi” (2013)

I

Maestoso e tenuto

sempre legatissimo

Órgano *f*

Pedalero *f*

Detailed description: This musical score is for an organ and a pedaler. The organ part consists of two staves (treble and bass clef) with a 2/2 time signature and a key signature of three flats. The melody in the treble clef is marked *f* and consists of a series of eighth notes with slurs, followed by a half note. The bass clef part consists of a series of half notes, also marked *f*. The pedaler part is a single bass clef staff with a 2/2 time signature and a key signature of three flats, playing a series of half notes marked *f*.

A

dolce ed a mezza voce

Tpt. 6

Org. *p*

Ped.

Detailed description: This musical score is for a trumpet, organ, and pedaler. The trumpet part (Tpt.) starts at measure 6 and consists of a series of quarter notes and half notes, marked *dolce ed a mezza voce*. The organ part (Org.) consists of two staves (treble and bass clef) with a 2/2 time signature and a key signature of three flats. The melody in the treble clef is marked *p* and consists of a series of half notes with slurs. The bass clef part consists of a series of half notes. The pedaler part (Ped.) is a single bass clef staff with a 2/2 time signature and a key signature of three flats, playing a series of half notes.

12

Tpt.

Org.

più p

più p

17

Tpt.

Org.

22

Tpt.

Org.

mf *f*

mf *f* *mf* *p*

B

27

Tpt.

Org.

Ped.

f

mf

f

31

Tpt.

Org.

Ped.

f

C

37

Org.

Ped.

pp

42

Tpt.

Org.

p

47

Tpt.

Org.

D

52

Tpt.

Org.

f

mf

E

57

Tpt.

Org.

Ped.

mf *f*

mf *f*

mf *f*

61

Tpt.

Org.

Ped.

ff

ff

II

Calmo sempre molt. espress.

Órgano

mp

A

mp

Pedalero

mp

6

Tpt.

mp

Org.

Ped.

10

Tpt.

Org.

Ped.

13

B

Tpt.

Org.

Ped.

più p

17

Tpt.

Org.

Ped.

21 C

Tpt.

Org. *con anima*
f

Ped.

27 *brillante*

Tpt. *f*

Org.

Ped.

30

Tpt.

Org.

Ped.

33 **D**

Tpt. *poco meno f*

Org. *poco meno f*

Ped. *poco meno f*

38

Tpt.

Org.

Ped.

42

Tpt. *p*

Org. *p*

Ped. *p*

III

Allegro molto e con giubilo

Órgano

f

6 *sempre marcato*

Tpt.

f

Órg.

Ped.

11 **A**

Tpt.

Órg.

Ped.

Detailed description: This page of a musical score is for measures 6 through 11. It features three staves: Organ (Órgano), Trumpet (Tpt.), and Pedal (Ped.). The music is in a 3/4 time signature with a key signature of two flats (B-flat and E-flat). The Organ part begins with a forte (*f*) dynamic and features a rhythmic pattern of eighth notes in the bass clef and quarter notes in the treble clef. The Trumpet part starts at measure 6 with a *sempre marcato* instruction and a forte (*f*) dynamic, playing a melodic line of quarter notes. The Pedal part provides a steady accompaniment of quarter notes. A section marker 'A' is placed above the Organ staff at measure 11. The Organ part continues with complex textures, including sixteenth-note runs and sustained chords.

18

Tpt.

Órg.

25

Tpt.

Órg.

B

31

Tpt.

Órg.

C

sempre f

38

Tpt.

Órg.

Ped.

44

Tpt.

Órg.

Ped.

D
Maestoso

ff

ff (legato)

ff

51

Tpt.

Órg.

Ped.

E *trattenendo poco a poco*

58

Tpt.

Órg.

Ped.

65

Tpt.

Órg.

Ped.

F
Tempo primo

71

Tpt.

Órg.

Ped.

77

Tpt.

f

Órg.

Ped.

82

G

Tpt.

Órg.

Ped.

87

Tpt.

ff

Órg.

Ped.

José Miguel Moreno Sabio

***Tres movimientos litúrgicos
para trompeta y órgano***

Particellas

**A partir de tres piezas contenidas en
“Missa brevis in festo Corporis Christi”**

I

A

Maestoso e tenuto

, dolce ed a mezza voce

6

12

19

B

29

C

36

D

50

E

57

61

Trompeta (Sib)

II

Calmo

4

A

mp

9

9

15

B

15

20

20

25

C

brillante

2

f

25

33

D

poco meno f

33

39

p

39

III

Allegro molto e con giubilo

sempre marcato

5

f

12

A

20

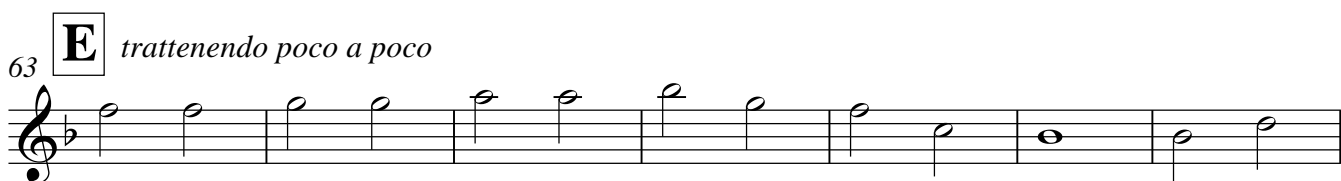
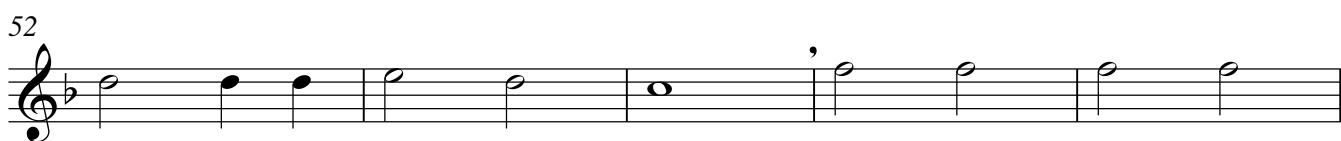
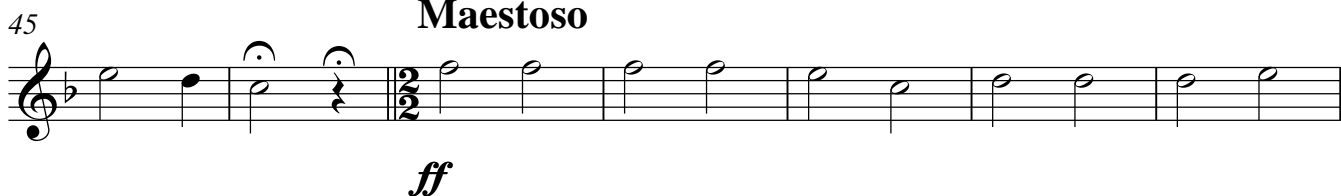
28

B

32

C

5

**D****Maestoso****F****Tempo primo****G**