

Viola

Concertino for alto-recorder and strings

Kees Schoonenbeek

I Allegro  $\text{♩} = 100$

8 *mp*

15

24 *mf*

31

38 *f*

45 *mf*

52 *f*

59 *mf*

66 *f*

73

80 *mf*

87



94



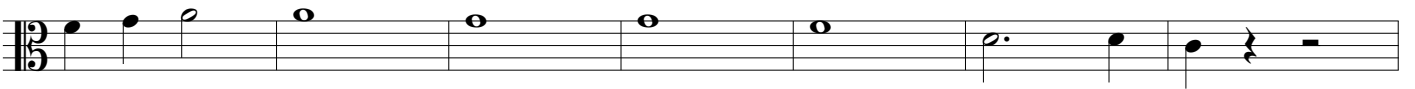
101



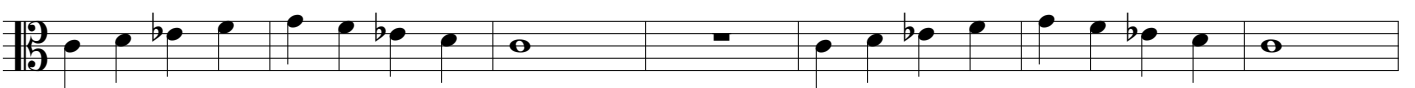
108



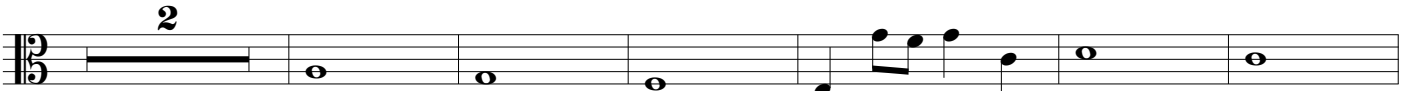
115



122



129 *f*



137



145



152



159



## II Andante ♩ = 70

### Concertino for alto-recorder and strings

Musical score for the second movement, 'Andante', measures 8 to 71. The score is written for alto-recorder and strings in 3/4 time. It features a variety of rhythmic patterns, including eighth and sixteenth notes, and rests. Dynamics include *p* (piano), *mp* (mezzo-piano), and *f* (forte). A triplet of eighth notes is marked with a '3' above it. The key signature has one flat (B-flat).

## III Allegro ♩ = 110

Musical score for the third movement, 'Allegro', measures 18 to 30. The score is written for alto-recorder and strings in 6/8 time. It features a variety of rhythmic patterns, including eighth and sixteenth notes, and rests. Dynamics include *mf* (mezzo-forte) and *f* (forte). The key signature has one flat (B-flat).

36



42



49



59 *f*



*mf*

68



*mf*

*f*

84



*f*

91

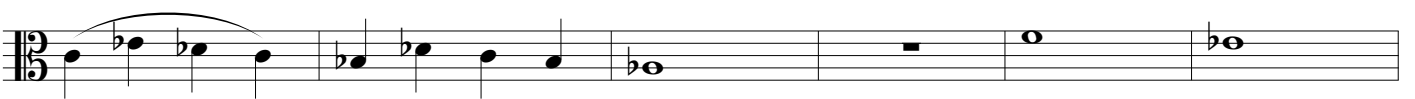


*mf*

97



107



113 *mp*



119



*mf*

126



132 Tempo I

18

Detailed description: This staff contains measures 132 to 154. It begins with a treble clef, a key signature of one flat (B-flat), and a 3/8 time signature. The melody consists of eighth and quarter notes. At the end of the staff, there is a double bar line followed by a 6/8 time signature and a fermata over the number 18.

155

Detailed description: This staff contains measures 155 to 160. The melody continues with eighth and quarter notes, featuring some slurs and ties.

161 *mf*

Detailed description: This staff contains measures 161 to 166. The melody is marked *mf* and features more complex rhythmic patterns with slurs and ties.

167

2

Detailed description: This staff contains measures 167 to 173. It features a double bar line with a fermata over the number 2, indicating a two-measure rest.

174 *f*

Detailed description: This staff contains measures 174 to 179. The melody is marked *f* and includes some rests and slurs.

180

7

*mf*

Detailed description: This staff contains measures 180 to 191. It begins with a double bar line and a fermata over the number 7, followed by a *mf* marking. The melody consists of dotted notes and eighth notes.

192

Detailed description: This staff contains measures 192 to 197. The melody continues with dotted notes and eighth notes.

198 *f*

Detailed description: This staff contains measures 198 to 203. The melody is marked *f* and includes some rests and slurs.

204

3

Detailed description: This staff contains measures 204 to 211. It features a double bar line with a fermata over the number 3, indicating a three-measure rest.

212

Detailed description: This staff contains measures 212 to 217. The melody continues with eighth and quarter notes.

218

Detailed description: This staff contains measures 218 to 223. The melody concludes with a long note and a final cadence.