

# Trios from Cantata 146.3 in original Bb

LET VOICE SOLO PARTS ALWAYS PREDOMINATE  
(opt. small non-cue notes for additional lines)

J. S. Bach [arr. P. Lang] BWV 146.3

Aria for Violin, Alto, and Cello "Ich will nach"

arr. in 3 parts: 1. Violin, 2. Violin or Viola or Cello 3. Cello

♩ = 60

1 Violin bwv 146.3 s3  
*f* opt. line

2 Violin for Alto Solo  
bwv 146.3 s3  
*f* opt. line

2 Viola for Alto Solo  
bwv 146.3 s3  
*f* opt. line

2 Violoncello for Alto Solo,  
down 8va bwv 146.3 s3  
*f*

3 Violoncello for Bc  
bwv 146.3 s3  
*f*

5

Vln. 1

Vln. 2

Vla.

Vc.

Vc.

9

Vln. 1

Vln. 2

Vla.

Vc.

Vc.

13

Vln. 1

Vln. 2

Vla.

Vc.

Vc.

17

Vln. 1  
Vln. 2  
Vla.  
Vc.  
Vc.

21

Vln. 1  
Vln. 2  
Vla.  
Vc.  
Vc.

25

Vln. 1  
Vln. 2  
Vla.  
Vc.  
Vc.

29

Vln. 1  
Vln. 2  
Vla.  
Vc.  
Vc.

33

Vln. 1  
Vln. 2  
Vla.  
Vc.  
Vc.

This system contains measures 33 through 36. The first violin part (Vln. 1) features a melodic line with eighth-note patterns and trills. The second violin (Vln. 2) and viola (Vla.) parts provide harmonic support with similar rhythmic motifs. The two cello parts (Vc.) play a steady eighth-note accompaniment. The key signature has two flats, and the time signature is 4/4.

37

Vln. 1  
Vln. 2  
Vla.  
Vc.  
Vc.

This system contains measures 37 through 40. The first violin part (Vln. 1) has a more active role with sixteenth-note passages and trills. The second violin (Vln. 2) and viola (Vla.) parts continue their harmonic support. The cello parts (Vc.) maintain the eighth-note accompaniment. The key signature and time signature remain the same.

41

Vln. 1  
Vln. 2  
Vla.  
Vc.  
Vc.

This system contains measures 41 through 44. The first violin part (Vln. 1) continues with its melodic line. The second violin (Vln. 2) and viola (Vla.) parts provide harmonic support. The cello parts (Vc.) maintain the eighth-note accompaniment. The key signature and time signature remain the same.

45

Vln. 1  
Vln. 2  
Vla.  
Vc.  
Vc.

This system contains measures 45 through 48. The first violin part (Vln. 1) features a melodic line with eighth-note patterns. The second violin (Vln. 2) and viola (Vla.) parts provide harmonic support. The cello parts (Vc.) maintain the eighth-note accompaniment. The key signature and time signature remain the same.

49

Vln. 1 *f* *tr*

Vln. 2

Vla.

Vc.

Vc.

53

Vln. 1 *rit.* *p* (Fine)

Vln. 2 *mf*

Vla. *mf*

Vc. *mf*

Vc. *rit.*

57

Vln. 1

Vln. 2

Vla.

Vc.

Vc.

61

Vln. 1

Vln. 2

Vla.

Vc.

Vc.

65

Vln. 1

Vln. 2

Vla.

Vc.

Vc.

67

D.C. al Fine

Vln. 1

Vln. 2

Vla.

Vc.

Vc.

1 Violin bwv 146.3 s3

# Trios from Cantata 146.3 in original Bb

LET VOICE SOLO PARTS ALWAYS PREDOMINATE

(opt. small non-cue notes for additional lines)

J. S. Bach [arr. P. Lang] BWV 146.3

Aria for Violin, Alto, and Bc "Ich will nach"

arr. in 3 parts: 1. Violin, 2. Violin or Viola or Cello 3. Cello

♩ = 60

*f* *tr* *tr*

4 *tr*

7 *p*

10 *tr*

12 *tr*

15

19

22 *f* *tr* *tr*

25 *tr*

28 *p*

30

33

36

39

42

46

49

52

55

57

60

63

66

*f*

*tr*

*rit.*

*p*

(Fine)

D.C. al Fine

Detailed description: This is a page of a musical score for the first violin part of the third section of Bach's Minuet in G major, BWV 146.3. The score is written on a single staff in G major (one sharp) and 3/4 time. It consists of ten lines of music, numbered 33 to 66. The piece is characterized by its rhythmic complexity, featuring many sixteenth and thirty-second notes. Trills (tr) are used as ornaments in measures 39, 49, and 52. Dynamic markings include forte (f) at measure 49, piano (p) at measure 55, and a ritardando (rit.) at measure 55. The piece concludes with a double bar line and the instruction 'D.C. al Fine' at measure 66.

2 Violin for Alto Solo bww 146.3 s3

# Trios from Cantata 146.3 in original Bb

LET VOICE SOLO PARTS ALWAYS PREDOMINATE

(opt. small non-cue notes for additional lines)

J. S. Bach [arr. P. Lang] BWV 146.3

Aria for Violin, Alto, and Bc "Ich will nach"

arr. in 3 parts: 1. Violin, 2. Violin or Viola or Cello 3. Cello

♩ = 60  
opt. line

5 *f*

9 *p f*

14

19

29 *f* **6**

33 *f*

38

43

48 **6** Vln. 1 (Fine) *rit.* *mf*

58

64 **D.C. al Fine**



2 Viola for Alto Solo bwv 146.3 s3

# Trios from Cantata 146.3 in original Bb

LET VOICE SOLO PARTS ALWAYS PREDOMINATE

(opt. small non-cue notes for additional lines)

J. S. Bach [arr. P. Lang] BWV 146.3

Aria for Violin, Alto, and Bc "Ich will nach"

arr. in 3 parts: 1. Violin, 2. Violin or Viola or Cello 3. Cello

♩ = 60  
opt. line

6 *f*

9 *p* *f*

14

19 **6**

29 Vln. 1

33 *f*

38

43

48 **6** Vln. 1 (Fine) *rit.* *mf*

58

64 **D.C. al Fine**

2 Violoncello for Alto Solo, down 8va bwv 146.3 s3

# Trios from Cantata 146.3 in original Bb

LET VOICE SOLO PARTS ALWAYS PREDOMINATE

(opt. small non-cue notes for additional lines)

J. S. Bach [arr. P. Lang] BWV 146.3

Aria for Violin, Alto, and Bc "Ich will nach"

arr. in 3 parts: 1. Violin, 2. Violin or Viola or Cello 3. Cello

♩ = 60  
opt. line

5 *f*

9 *p f*

14

19 **6**

29 Vln. 1

33 *f*

38

43

48 **6** Vln. 1 (Fine) *rit.* *mf*

58

64 **D.C. al Fine**

3 Violoncello for Bc bwv 146.3 s3

# Trios from Cantata 146.3 in original Bb

LET VOICE SOLO PARTS ALWAYS PREDOMINATE

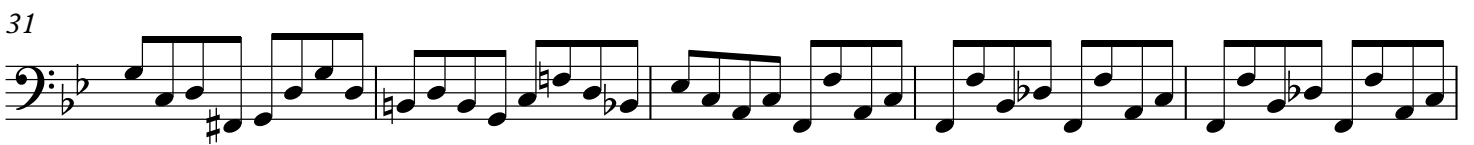
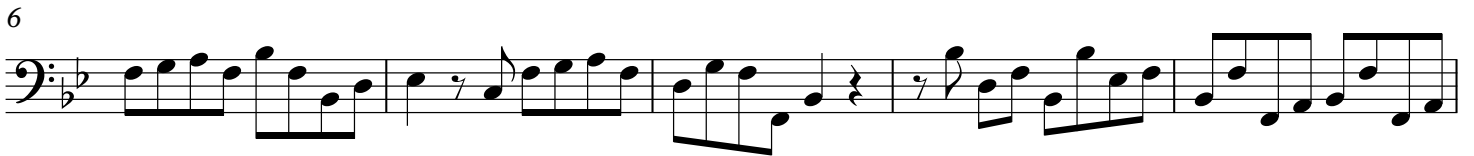
(opt. small non-cue notes for additional lines)

J. S. Bach [arr. P. Lang] BWV 146.3

Aria for Violin, Alto, and Bc "Ich will nach"

arr. in 3 parts: 1. Violin, 2. Violin or Viola or Cello 3. Cello

♩ = 60



46

*f*

51

56 (Fine)

*rit.*

61

65 **D.C. al Fine**