

Violin I

Cuarteto No 5

en Fa Mayor, K.158

Wolfgang Amadeus Mozart
transcrip. Gory
info@gory.jazztel.es

Allegro

f 3

8 *p* 3

17 *tr.* *tr.* *tr.* *p*

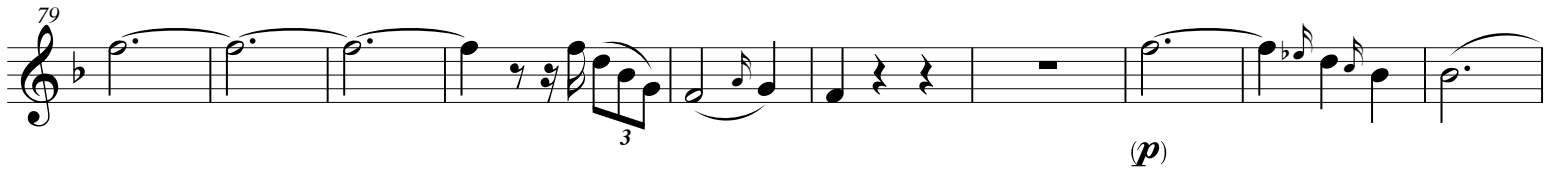
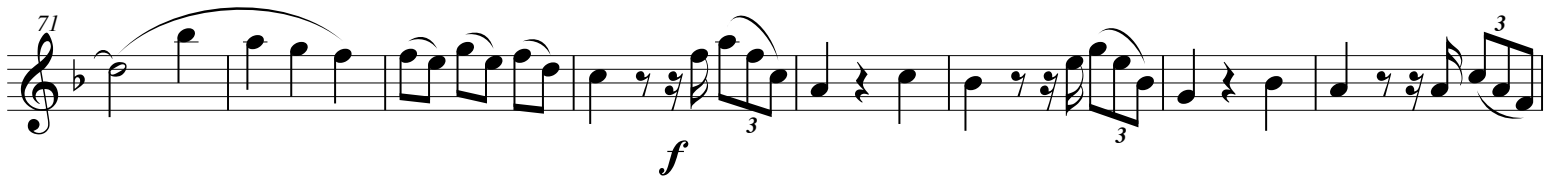
25 *tr.* *p*

33 *f* 3 *b^b* 3

41 *p* 3 3 *f* *p*

47 *f* *p* *f* *p*

53 *f* 3 3 3 3



Andante un poco Allegretto

f

4 *p* *fp*

8 *fp* *f* *tr*

13 *p*

18 *f* *p*

23 *f*

28 *p* *fp* *fp*

34 *f* *tr*

39 *p* *f*

Detailed description: This musical score is for a single melodic line in C major, 4/4 time. It consists of nine staves of music. The first staff begins with a forte (*f*) dynamic. The second staff starts at measure 4 and includes piano (*p*) and fortissimo-piano (*fp*) dynamics. The third staff starts at measure 8 and features fortissimo-piano (*fp*), forte (*f*), and a trill (*tr*) articulation. The fourth staff starts at measure 13 and is marked piano (*p*). The fifth staff starts at measure 18 and includes forte (*f*) and piano (*p*) dynamics, with a repeat sign at measure 20. The sixth staff starts at measure 23 and is marked forte (*f*). The seventh staff starts at measure 28 and includes piano (*p*), fortissimo-piano (*fp*), and fortissimo-piano (*fp*) dynamics. The eighth staff starts at measure 34 and features forte (*f*) and a trill (*tr*) articulation. The ninth staff starts at measure 39 and includes piano (*p*) and forte (*f*) dynamics.

Tempo di Minuetto

p

f *p* *f* *p* *fp*

fp *f* *p*

f

f *p*

p *f* *p* *fp*

f *p* *f* *p* *fp*

fp *f*

63 Musical staff 63-70: Treble clef, key signature of three flats (B-flat, E-flat, A-flat). Measure 63 starts with a half note G4, followed by eighth notes A4, B4, C5, D5. Measure 64 has a quarter rest, then a half note B-flat4. Measure 65 has a quarter rest, then a half note A4. Measure 66 has a quarter rest, then a half note G4. Measure 67 has a quarter rest, then a half note F4. Measure 68 has a quarter rest, then a half note E4. Measure 69 has a quarter rest, then a half note D4. Measure 70 has a quarter rest, then a half note C4. Dynamics: *p*.

71 Musical staff 71-78: Treble clef, key signature of three flats. Measure 71 has a quarter rest, then a half note B-flat4. Measure 72 has a quarter rest, then a half note A4. Measure 73 has a quarter rest, then a half note G4. Measure 74 has a quarter rest, then a half note F4. Measure 75 has a quarter rest, then a half note E4. Measure 76 has a quarter rest, then a half note D4. Measure 77 has a quarter rest, then a half note C4. Measure 78 has a quarter rest, then a half note B-flat4. Dynamics: *f* (measures 75-78), *p* (measures 71-74).

79 Musical staff 79-86: Treble clef, key signature of three flats. Measure 79 has a quarter rest, then a half note B-flat4. Measure 80 has a quarter rest, then a half note A4. Measure 81 has a quarter rest, then a half note G4. Measure 82 has a quarter rest, then a half note F4. Measure 83 has a quarter rest, then a half note E4. Measure 84 has a quarter rest, then a half note D4. Measure 85 has a quarter rest, then a half note C4. Measure 86 has a quarter rest, then a half note B-flat4. Dynamics: *f* (measures 81-84), *p* (measures 79-80, 85-86).

87 Musical staff 87-94: Treble clef, key signature of three flats. Measure 87 has a quarter rest, then a half note B-flat4. Measure 88 has a quarter rest, then a half note A4. Measure 89 has a quarter rest, then a half note G4. Measure 90 has a quarter rest, then a half note F4. Measure 91 has a quarter rest, then a half note E4. Measure 92 has a quarter rest, then a half note D4. Measure 93 has a quarter rest, then a half note C4. Measure 94 has a quarter rest, then a half note B-flat4. Dynamics: *f*.

96 Musical staff 96-103: Treble clef, key signature of three flats. Measure 96 has a quarter rest, then a half note B-flat4. Measure 97 has a quarter rest, then a half note A4. Measure 98 has a quarter rest, then a half note G4. Measure 99 has a quarter rest, then a half note F4. Measure 100 has a quarter rest, then a half note E4. Measure 101 has a quarter rest, then a half note D4. Measure 102 has a quarter rest, then a half note C4. Measure 103 has a quarter rest, then a half note B-flat4. Dynamics: *p*.

104 Musical staff 104-111: Treble clef, key signature of three flats. Measure 104 has a quarter rest, then a half note B-flat4. Measure 105 has a quarter rest, then a half note A4. Measure 106 has a quarter rest, then a half note G4. Measure 107 has a quarter rest, then a half note F4. Measure 108 has a quarter rest, then a half note E4. Measure 109 has a quarter rest, then a half note D4. Measure 110 has a quarter rest, then a half note C4. Measure 111 has a quarter rest, then a half note B-flat4. Dynamics: *f* (measures 104-107), *p* (measures 108-111).

Tempo di Minuetto D.C. senza ritornello