

Cantus

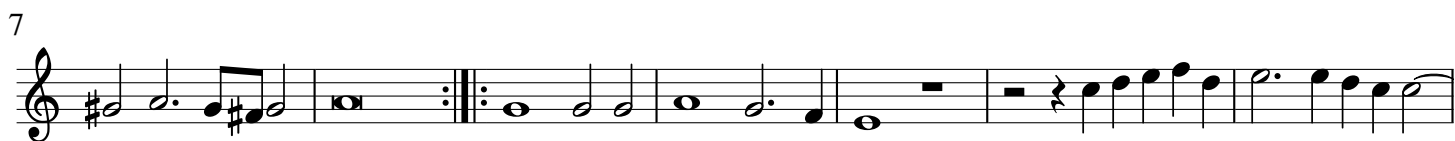
1. Lachrimae Antiquae

John Dowland



2. Lachrimae Antiquae Novae

John Dowland



5. Lachrimae Coactae

John Dowland

8

14

20

6. Lachrimae Amantis

John Dowland

7

14

22

7. Lachrimae Verae

John Dowland

Musical score for 'Lachrimae Verae' by John Dowland, measures 1-16. The piece is in 4/2 time and G major. The notation consists of three staves of music. The first staff (measures 1-7) begins with a whole rest followed by a series of eighth and quarter notes. The second staff (measures 8-16) contains a double bar line with repeat dots, followed by a melodic line with various intervals and accidentals, ending with a double bar line and repeat dots.

8. Semper Dowland semper dolens

John Dowland

Musical score for 'Semper Dowland semper dolens' by John Dowland, measures 1-34. The piece is in 4/2 time and G major. The notation consists of six staves of music. The first staff (measures 1-8) starts with a double bar line, a first ending bracket over two measures, and then a melodic line. The second staff (measures 9-15) features a double bar line with repeat dots, followed by a melodic line. The third staff (measures 16-21) continues the melodic line with various intervals and accidentals. The fourth staff (measures 22-26) shows a melodic line with a double bar line and repeat dots. The fifth staff (measures 27-29) continues the melodic line. The sixth staff (measures 30-34) concludes the piece with a melodic line and a final double bar line with repeat dots.

9. Sir Henry Umpton's Funerall

John Dowland

7

13

20

10. Mr. John Langton's Pavan

John Dowland

6

12

16

20

11. The King of Denmark's Galiard

John Dowland

Musical score for 'The King of Denmark's Galiard' in 3/2 time, featuring three staves of music. The first staff begins with a treble clef and a key signature of one flat. The score includes measure numbers 10 and 18. The piece concludes with a double bar line and repeat dots.

12. The Earle of Essex Galiard

John Dowland

Musical score for 'The Earle of Essex Galiard' in 3/2 time, featuring three staves of music. The first staff begins with a treble clef and a key signature of one flat. The score includes measure numbers 9 and 17. The piece concludes with a double bar line and repeat dots.

13. Sir John Souch his Galiard

John Dowland

Musical score for 'Sir John Souch his Galiard' in 3/2 time, featuring three staves of music. The first staff begins with a treble clef and a key signature of one flat. The score includes measure numbers 9 and 17. The piece concludes with a double bar line and repeat dots.

14. M. Henry Noel his Galiard

John Dowland



8



18



27

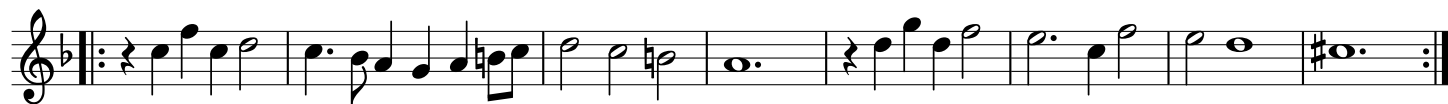


15. M. Giles Hobies Galiard

John Dowland



9



17



16. M. Nicholas Gryffith his Galiard

John Dowland

9

17

25

17. M. Thomas Collier his Galiard

John Dowland

10

19

18. Captaine Digorie Piper his Galiard

John Dowland

13

19. M. Buctons Galiard

John Dowland



9



17



20. Mistresse Nichols Almand

John Dowland



4



21. M. George Whitehead his Almand

John Dowland



6



10

