

Altus

1. Lachrimae Antiquae

John Dowland

Musical score for '1. Lachrimae Antiquae' in 4/4 time. The score consists of four staves of music. The first staff begins with a treble clef and a key signature of one sharp (F#). The melody is composed of eighth and sixteenth notes, with some rests. The second staff starts at measure 7 and includes a repeat sign. The third staff starts at measure 14 and also includes a repeat sign. The fourth staff starts at measure 20 and ends with a double bar line and repeat sign.

2. Lachrimae Antiquae Novae

John Dowland

Musical score for '2. Lachrimae Antiquae Novae' in 4/4 time. The score consists of four staves of music. The first staff begins with a treble clef and a key signature of one sharp (F#). The melody is composed of eighth and sixteenth notes, with some rests. The second staff starts at measure 7 and includes a repeat sign. The third staff starts at measure 14 and also includes a repeat sign. The fourth staff starts at measure 21 and ends with a double bar line and repeat sign.

3. Lachrimae Gementes

John Dowland

7

14

20

4. Lachrimae Tristes

John Dowland

6

13

20

5. Lachrimae Coactae

John Dowland

10

17

Musical score for 'Lachrimae Coactae' by John Dowland. The piece is in 2/4 time and D major. It consists of three staves of music. The first staff contains measures 1 through 9, ending with a repeat sign. The second staff contains measures 10 through 16, ending with a repeat sign. The third staff contains measures 17 through 24, ending with a repeat sign. The key signature has one sharp (F#).

6. Lachrimae Amantis

John Dowland

9

18

Musical score for 'Lachrimae Amantis' by John Dowland. The piece is in 2/4 time and D major. It consists of three staves of music. The first staff contains measures 1 through 8, ending with a repeat sign. The second staff contains measures 9 through 17, ending with a repeat sign. The third staff contains measures 18 through 25, ending with a repeat sign. The key signature has one sharp (F#).

7. Lachrimae Verae

John Dowland

8

15

Musical score for 'Lachrimae Verae' by John Dowland. The piece is in 2/4 time and D major. It consists of three staves of music. The first staff contains measures 1 through 7, ending with a repeat sign. The second staff contains measures 8 through 14, ending with a repeat sign. The third staff contains measures 15 through 22, ending with a repeat sign. The key signature has one sharp (F#).

8. Semper Dowland semper dolens

John Dowland

Musical score for 'Semper Dowland semper dolens' in 4/4 time. The score consists of six staves of music. The first staff begins with a treble clef and a 4/4 time signature. The melody is written in a single line. The second staff starts at measure 6. The third staff starts at measure 12 and includes a repeat sign. The fourth staff starts at measure 18. The fifth staff starts at measure 22 and includes a repeat sign. The sixth staff starts at measure 30. The piece concludes with a double bar line and repeat dots.

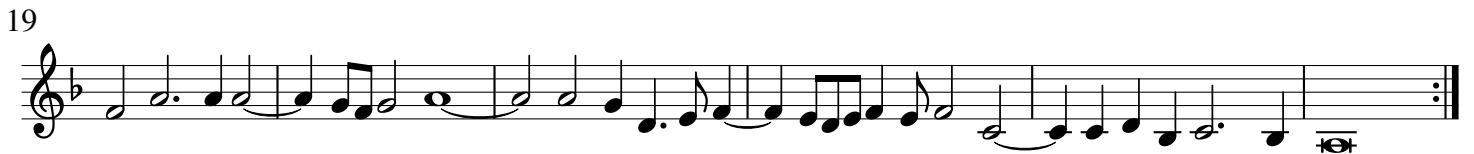
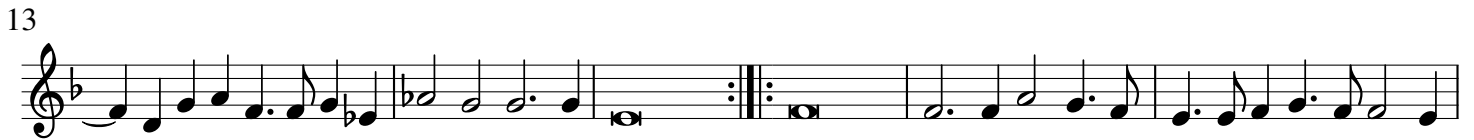
9. Sir Henry Umpton's Funerall

John Dowland

Musical score for 'Sir Henry Umpton's Funerall' in 4/4 time. The score consists of four staves of music. The first staff begins with a treble clef and a 4/4 time signature. The melody is written in a single line. The second staff starts at measure 10. The third staff starts at measure 16 and includes a repeat sign. The fourth staff starts at measure 22 and includes a repeat sign. The piece concludes with a double bar line and repeat dots.

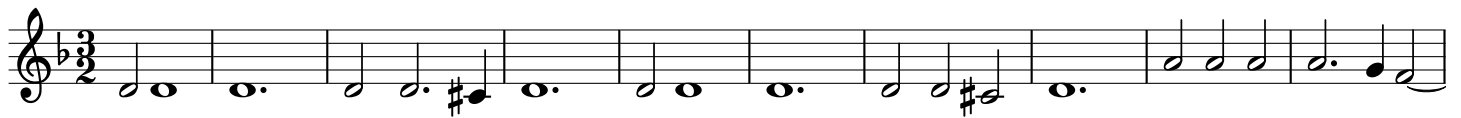
10. Mr. John Langton's Pavan

John Dowland



11. The King of Denmark's Galiard

John Dowland



12. The Earle of Essex Galiard

John Dowland

Musical score for 'The Earle of Essex Galiard' in 3/2 time, featuring three staves of music. The first staff begins with a treble clef and a key signature of one flat. The score includes measure numbers 10 and 19. The piece concludes with a double bar line and repeat dots.

13. Sir John Souch his Galiard

John Dowland

Musical score for 'Sir John Souch his Galiard' in 3/2 time, featuring three staves of music. The first staff begins with a treble clef and a key signature of one flat. The score includes measure numbers 10 and 18. The piece concludes with a double bar line and repeat dots.

14. M. Henry Noel his Galiard

John Dowland

Musical score for 'M. Henry Noel his Galiard' in 3/2 time, featuring three staves of music. The first staff begins with a treble clef and a key signature of one flat. The score includes measure numbers 11 and 24. The piece concludes with a double bar line and repeat dots.

15. M. Giles Hobies Galiard

John Dowland

10

19

16. M. Nicholas Gryffith his Galiard

John Dowland

11

22

17. M. Thomas Collier his Galiard

John Dowland

10

19

18. Captaine Digorie Piper his Galiard

John Dowland

Musical notation for 'Captaine Digorie Piper his Galiard' in 3/2 time, featuring a treble clef and a key signature of one flat. The piece consists of three staves of music. The first staff begins with a treble clef and a key signature of one flat. The second staff starts at measure 10, and the third staff starts at measure 19. The music is characterized by a mix of eighth and sixteenth notes, with a final double bar line and repeat sign.

19. M. Buctons Galiard

John Dowland

Musical notation for 'M. Buctons Galiard' in 3/2 time, featuring a treble clef and a key signature of one flat. The piece consists of three staves of music. The first staff begins with a treble clef and a key signature of one flat. The second staff starts at measure 9, and the third staff starts at measure 17. The music is characterized by a mix of eighth and sixteenth notes, with a final double bar line and repeat sign.

20. Mistresse Nichols Almand

John Dowland

Musical notation for 'Mistresse Nichols Almand' in 4/4 time, featuring a treble clef and a key signature of one flat. The piece consists of two staves of music. The first staff begins with a treble clef and a key signature of one flat. The second staff starts at measure 4. The music is characterized by a mix of eighth and sixteenth notes, with a final double bar line and repeat sign.

21. M. George Whitehead his Almand

John Dowland



5



9

