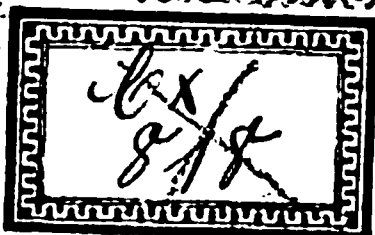
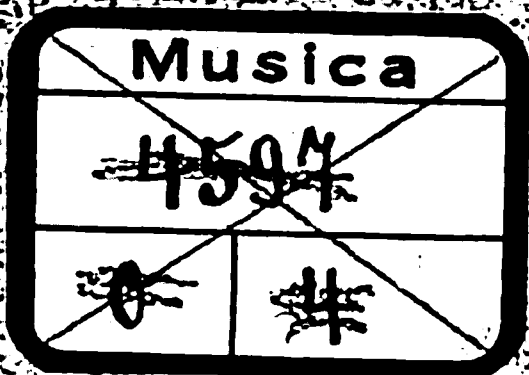


Schraner No. II.  
22. Fach 9. Lage.  
No. 9. Concerto.  
~~Vno conc. Vni Viola e Basso.~~  
4. St.  
Del Sig. Reichenauer.



DS

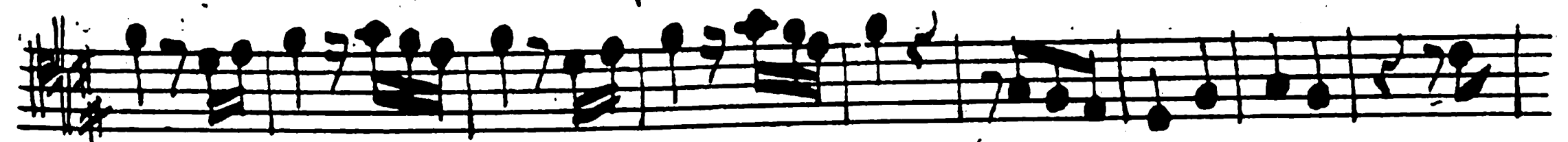
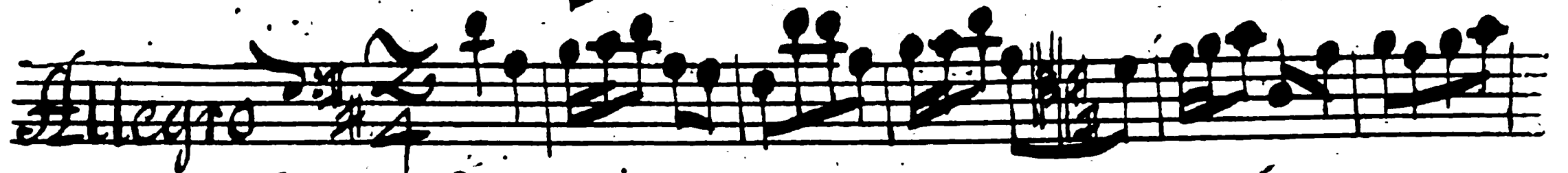
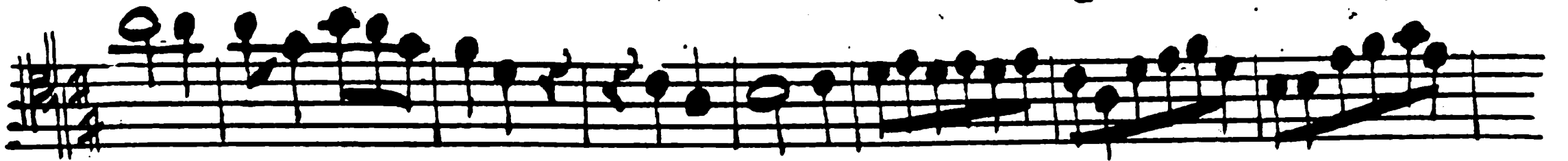


Mus. 2494-0-4



Piroloncello

# Violoncello Obligato



Handwritten musical score on ten staves. The first seven staves contain dense, fast-moving melodic lines with many beamed notes and slurs. The eighth staff begins with the word "Dopo" in a cursive hand, followed by a change in notation to a slower, more spacious melody with larger note heads and fewer beamed notes. The ninth and tenth staves continue this slower melodic style. The notation is in black ink on a white background.

*Voltato*

*Tempo di*  
*Allegretto*

3.

3.

# Concerto

# Violino Primo

Adagio

trino

2.

8.

Allegro

5.

4.

3.

3.

3.

3.

3.

3.

Voltate



*Adagio*

*Tempo di Menuet*

Concerto

Violino Secondo

Adagio 3/4 3. piano fme

13.

Allegro 3/4 14.

6.

Voltate



*Adagio*

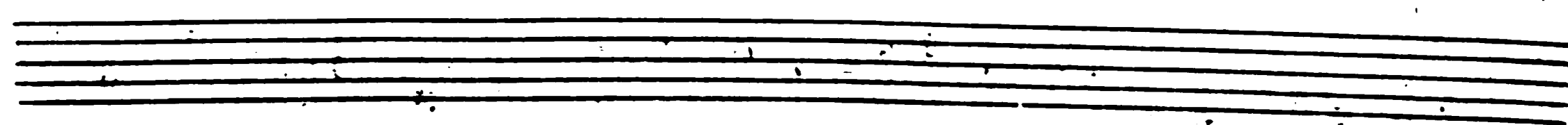
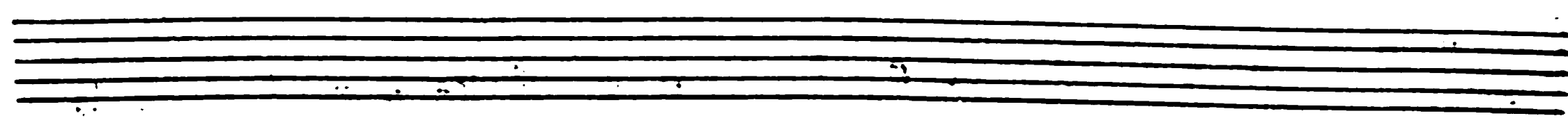
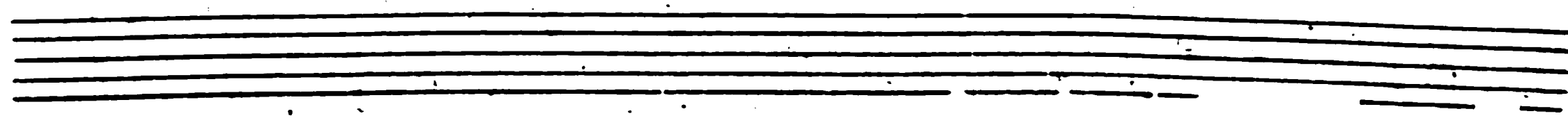
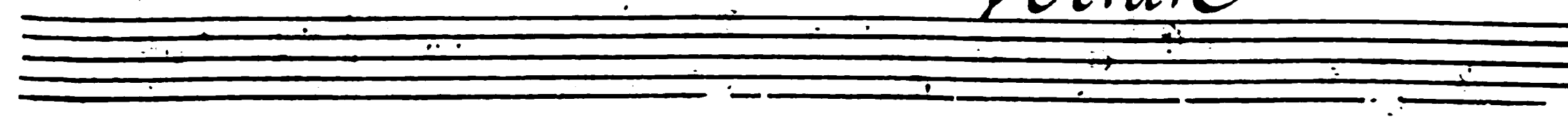
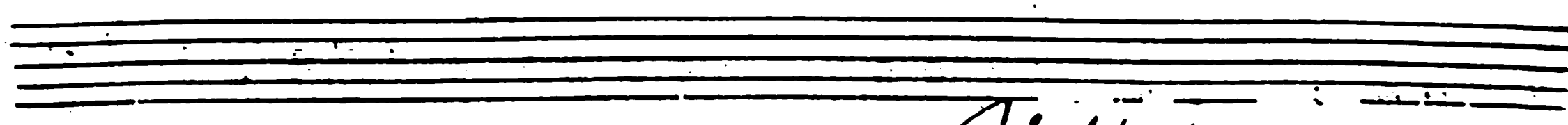
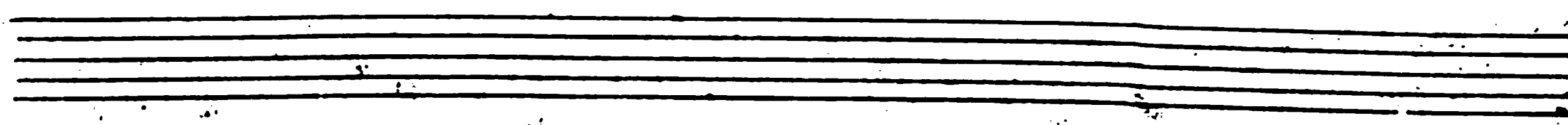
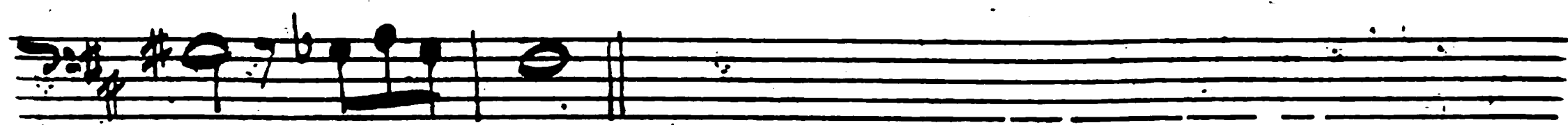
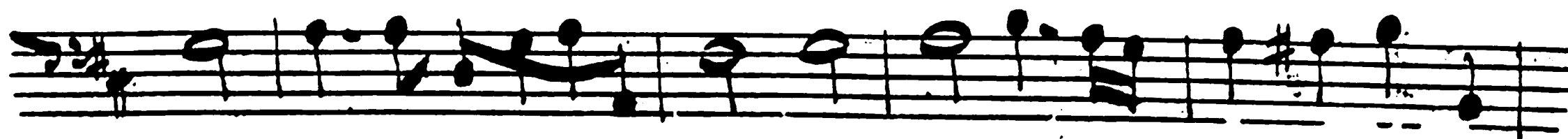
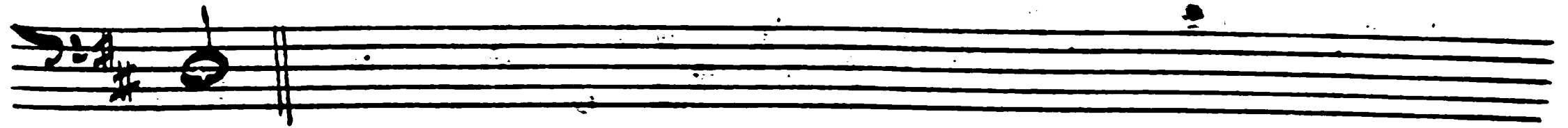
*Tempo di Menuet*

*Cymbals*

# Concerto

# Cembalo

The image displays a handwritten musical score for a Cembalo (harpsichord) concerto. The score is divided into two main sections: **Adagio** and **Allegro**. Both sections are written in G major (one sharp) and 2/4 time. The **Adagio** section consists of 11 staves of music, characterized by a slower tempo and a melodic focus. It includes first and second endings, marked with "2.". The **Allegro** section follows, consisting of 10 staves of music, marked with a faster tempo. This section is more rhythmically active and includes first, second, and third endings, marked with "1.", "2.", and "3." respectively. The notation is clear and legible, with standard musical symbols such as notes, rests, and bar lines.



*Voltate*

Tempo di  
Allegretto

Handwritten musical score for a piece titled "Tempo di Allegretto". The score consists of nine staves of music. The first staff includes a treble clef, a key signature of one sharp (F#), and a 3/8 time signature. The music is written in a cursive, handwritten style. The eighth staff concludes with a double bar line, a fermata over the final note, and a large scribbled-out section of the staff. The remaining staves are empty.