

Symphonie N° 8.

Odeon N° 781.

F dur.

Corno I in F.

L. van Beethoven, Op.93.

Allegro vivace e con brio.

f *p dolce* 1

f

1

a tempo *sf* *sf* *sf* *sf* 1 2 9 *ritard.* 1

7 *ritard.* 3 *a tempo* *p* *pp*

sf *sf* *sf* *sf* *ff*

4 1 *Fag. dolce* *p*

5 *ff* *p*

1 *f* *sf* *sf* *sf* *sf* *sf* *ff*

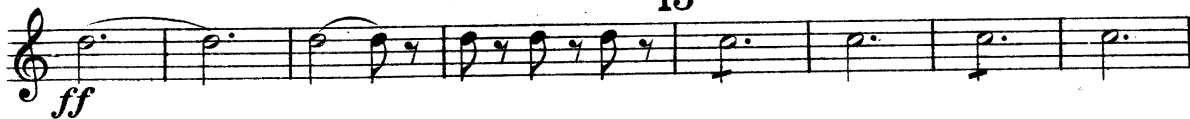
1. 2. 6 7 *sf* *sf* *sf* *sf* *sf*

Corno I in F.

Musical score for Corno I in F, measures 7-12. The score is written on a single treble clef staff. Measure 7 begins with a fortissimo (*ff*) dynamic and features a melodic line with a slur over four notes. Measure 8 starts with a mezzo-forte (*f*) dynamic and includes a 'Fag.' (Fagotto) entry marked with a *p* dynamic. Measure 9 continues with *f* dynamics. Measure 10 features a crescendo to fortissimo (*ff*) and includes a slur over two notes. Measure 11 is marked with *f* dynamics. Measure 12 begins with a piano (*p*) dynamic and a 'Fag.' entry, followed by a *piu f* dynamic. Measure 13 starts with a piano (*p*) dynamic and a 'Fag.' entry, followed by a *pdolce f* dynamic. Measure 14 continues with a piano (*p*) dynamic and a 'Fag.' entry, followed by a *pdolce* dynamic. Measure 15 begins with a piano (*p*) dynamic and a 'Fag.' entry, followed by a *crese.* (crescendo) dynamic.

Corno I in F.

13



Corno I in F.

Fag.
pp
sempre pp
cresc.

19
ff
sf

sf
sf
sf
sf
p

20
cresc.
f
sf
sf
sf

21
sf
sf
sf
sf
fff

1 2 1
p

1 1
dim.
pp

22 Allegretto scherzando.

pp
sempre staccato

ff
p

f
sf
sf
p
f
sf
sf
dim.

Corno I in F.

23 *pp* *cresc.* *f* *ff* 1

2 24 1 *pp* *cresc.* *cresc.*

dim. *pp*

25 1 2 3 4 5 6 7 8 *cresc.*

26 1 *ff* 1

4 27 1 *ff* *p*

28 *p* *pp* *pp*

ff *ff* Fag.

pp *cresc.* *ff*

Corno I in F.

29 Tempo di Menuetto.

1. *p* *f* *sf*

1. 2. 30 *Fag.* *sf* *sf* *sf* *sf* *sf*

sf *sf* *sf* *fp* *dim.*

31 3 *pp* *f*

più f *ff* *p* *ff* 32

1. 1. 2. *sf* *Fine.*

dolce 33 *cresc.* *p* 2. 1.

2. 34 1. 2. *Fag.* *b_p*

35 *f* *p* *p* *cresc.* *p*

cresc. *p* *cresc.*

p *cresc.* *p* *dim.*

Menuetto Da Capo al Fine.

Corno I in F.

36 Allegro vivace.

14

ppp

37

ff sempre ff

38

sf sf sf p

cresc.

cresc.

39

8

f

2

piuf

40

21 41 8

ff

Oboe.

f f f sf

4

4

42

2

1

1

14

Detailed description: This page contains the musical score for the first horn part in F major, measures 36 through 42. The tempo is marked 'Allegro vivace'. The score is written in treble clef with a common time signature. Measure 36 begins with a rest for 14 measures, followed by a triplet of eighth notes. The dynamic is *ppp*. Measure 37 continues with a triplet of eighth notes, marked *ff sempre ff*. Measure 38 features a series of eighth notes with accents (*sf*) and a dynamic change to *p*. Measure 39 has a rest for 8 measures, followed by a half note, then a rest for 2 measures, and ends with a *piuf* marking. Measure 40 starts with a half note, followed by a rest for 21 measures, then a half note, a rest for 41 measures, and ends with a rest for 8 measures. The dynamic is *ff*. Measure 41 is the start of the Oboe part, marked *f*. Measure 42 features a half note, a rest for 2 measures, a quarter note, a rest for 1 measure, a quarter note, a rest for 1 measure, and ends with a rest for 14 measures. The dynamic is *f*.

Corno I in F.

43 *pp* 1

sempre più p *ppp* *ff* *sempre ff* 44 3

3

45

1

46 *p*

cresc. *p*

47 7 *f*

Corno I in F.

53

sempre ff

54

sf sf sf sf sf sf sf sf sf sf sf sf sf sf sf sf

f p

55

pdolce f ff

56

sf sf fp p p p p pp

Fag. 4

57

cresc. f ff

Symphonie N° 8.

Odeon N° 781.

F dur.

Corno II in F

L. van Beethoven, Op. 93.

Allegro vivace e con brio.

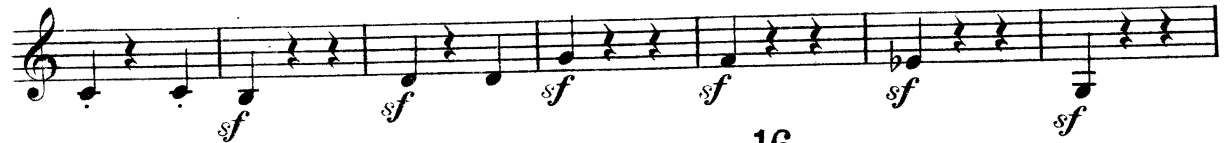
The musical score for Corno II in F, Op. 93, by Beethoven, is presented in ten staves. The key signature is F major and the time signature is 3/4. The tempo is marked 'Allegro vivace e con brio'. The score includes various dynamics such as *p*, *sf*, *ff*, and *cresc.*, as well as performance instructions like 'ritard. a tempo' and 'ritard.'. The score is marked with first and second endings and includes a 'Fag.' (Bassoon) part.

Corno II in F.

Musical score for Corno II in F, measures 7-12. The score is written on ten staves. Measure 7 starts with a *ff* dynamic. Measure 8 has a *ff* dynamic. Measure 9 has a *sf* dynamic. Measure 10 has a *sf* dynamic. Measure 11 has a *sf* dynamic. Measure 12 has a *fff* dynamic. The score includes various dynamics such as *ff*, *sf*, *f*, *fff*, *p*, *dolce*, *p dolce f*, and *piu f*. There are also first endings marked with a '1' over a bar line. The score is in treble clef and includes a *cresc.* marking at the beginning of the final staff.

Corno II in F.

13



Corno II in F.

1 2 24 1

ff *ff* *pp*

cresc.

dim. *pp*

25 1 2 3 4 5 6 7

8 26 *f* *p*

1 4 27 *ff* *ff* Fag.

p

cresc. *dim.*

28 *pp*

ff *ff*

pp *cresc.*

Corno II in F.

36 Allegro vivace.

14

37

ppp

ff sempre ff

3

sf sf sf

38

7

I.

cresc.

p

3

Fag.

1

39

2

Fag.

f

1

40

piuf

21

41

8

Oboe

f

sf

Fag.

442

2

sf

3

4

5

sf

ff

Corno II in F.

43

pp

44

ff *sempre ff*

sempre p *ppp*

3

45

Fag. *f*

46

p cresc. *p*

7

47

pp *f*

7

più f

Detailed description: This page of a musical score for Corno II in F contains measures 43 through 47. The music is written on a single staff in treble clef with a key signature of one flat (B-flat). Measure 43 begins with a piano (*pp*) dynamic and features a series of eighth notes with slurs. Measure 44 shows a dynamic shift to fortissimo (*ff*) with the instruction *sempre ff*, including a triplet of eighth notes. Measure 45 continues with a piano (*p*) dynamic and *sempre p* instruction, featuring a triplet of eighth notes. Measure 46 starts with a piano (*p*) dynamic and a *p cresc.* instruction, leading to a *p* dynamic. Measure 47 begins with a piano (*pp*) dynamic and a *f* dynamic, including a triplet of eighth notes. The score concludes with a *più f* instruction and a final note. The page number 8 is in the top left, and the instrument title 'Corno II in F.' is centered at the top. The number '43' is above the first measure, '44' above the second, '45' above the fifth, and '46' above the eighth. The number '7' appears above the triplet in measures 44, 45, and 47. The word 'Fag.' is written below the staff in measure 45. The number 'C. 41963' is at the bottom center.

Corno II in F.

Musical score for Corno II in F, measures 48-52 and 5-6. The score is written on ten staves. Measure 48 starts with a *ff* dynamic. Measure 49 has a *pp* dynamic. Measure 50 has a *pp* dynamic and a *sempre pp* marking. Measure 51 has a *cresc.* marking. Measure 52 has a *ff* dynamic. Measure 5 has a *pp* dynamic. Measure 6 has a *ppp* dynamic and a *sempre più p* marking. The score includes various musical notations such as slurs, accents, and dynamic markings.

Corno II in F.

53
sempre ff

54
fp

55
ff *pdolce*

56
Tromb. *p* *Fag.* *p*

57
crese. *ff*

Detailed description: This page of a musical score for Corno II in F contains measures 53 through 57. The music is written in treble clef with a key signature of one flat (F major). Measure 53 begins with a triplet of eighth notes and is marked *sempre ff*. Measure 54 features a *fp* dynamic and includes a *p* dynamic section with a slur. Measure 55 starts with *ff* and ends with *pdolce*. Measure 56 includes parts for Trombone (*Tromb.*) and Bassoon (*Fag.*) with a *p* dynamic. Measure 57 begins with a *crese.* (crescendo) marking and ends with *ff*. The score includes various musical notations such as triplets, slurs, and dynamic markings.